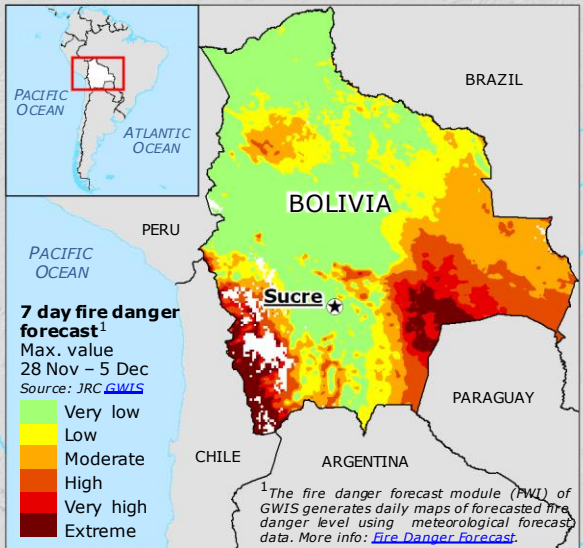


Bolivia | Wildfires and EU response



UCPM response *as of 28 Nov*

- On 20 November, Bolivia requested support from the EU Civil Protection Mechanism ([UCPM](#)).
- France** deployed:
 - 1 ground forest firefighting Team (GFFF) team (36 pax)
 - 1 drone unit (4 pax)
- On 24 November, **DG ECHO Rapid Response Coordinator** was deployed to La Paz.
- On 25 November French team arrived in Santa Cruz department.
- Copernicus EMS Rapid Mapping ([EMSR709](#)) activated on 21 November.



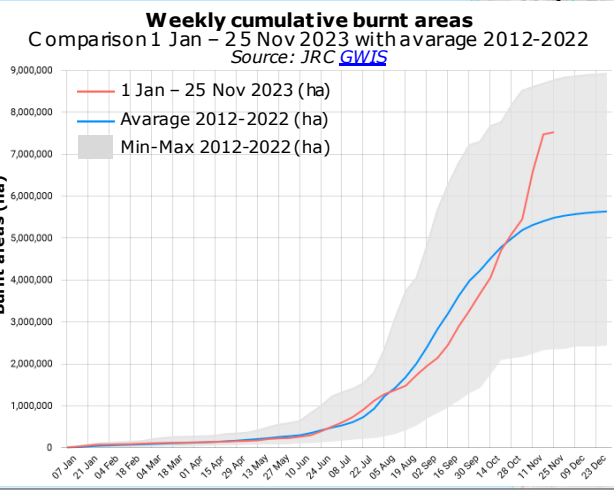
Location of burnt areas²
 Source: JRC [GWIS](#)
 Near Real Time (NRT) detection

- Red square: Burnt areas 1 – 27 Nov 2023

Recent active wildfires³
 Source: JRC [GWIS](#)

- Blue circle: 27 Nov
- Yellow circle: 25-26 Nov
- Red flame icon: GDACS [red](#) alert

- Light green: Forests Source: [FAO](#)
- Dark green: Protected areas Sources: [GeoBolivia](#), [SER NAP](#)
- Purple outline: Copernicus [EMSR709](#) Area of Interest (AoI)
- Grey square: Built-up area Source: [JRC GHSL](#)
- Thin black line: Department boundary
- Thick black line: Country boundary



GWIS: Global Wildfire Information System.
²JRC GWIS Near Real Time (NRT) burnt areas are derived from thermal anomalies from MODIS and VIIRS sensors. More info: [Rapid Damage Assessment](#).
³[Thermal anomalies](#) (from MODIS and VIIRS sensors) compare the temperature of a potential fire with the temperature of the land cover around it; if the difference is above a given threshold, the potential fire is confirmed as an active fire.
 © European Union, 2022. Map produced by the JRC. The boundaries and the names shown on this map do not imply official endorsement or acceptance by the European Union.

