

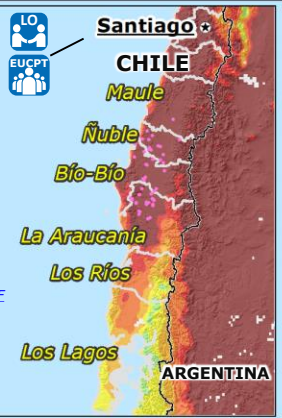
Chile | Wildfires and UCPM Activation



Fire danger forecast¹
15-24 Feb
Source: JRC [GWIS](#)

- Very low
- Low
- Moderate
- High
- Very high
- Extreme

● Area with active fire on 14 Feb
Source: [CONAF](#)



UCPM Activation and response as of 15 Feb

On 5 February a request for assistance was advanced by Chile for Aerial Forest Firefighting Capacities (AFF), Ground forest fire fighting module (GFFF) units, and fire behavior analysts teams. On 9 Feb, Chilean authorities submitted a request for firefighting equipment and tools.

- Accepted offers:
- A team of firefighters, coordination experts, and medical personnel, 141 persons in total
 - A team composed of 80 firefighters.
 - Two teams of 28 firefighters in total, and 1 Forest Firefighting Assessment and Advisory Team (FAST) composed by 10 pax.
 - A ERCC Liaison officer is deployed to the area.
 - A EUCP Team X2
 - Aristotle reporting service and Copernicus Emergency Mapping Service ([EMSR647](#)) was activated by the ERCC (34 maps have been produced so far).

Copernicus EMSR647 Activation

- Area of Interest (AoI)
- Detected burned area

Land cover
Source: [Copernicus Global Land cover, GHSL, BCN](#)

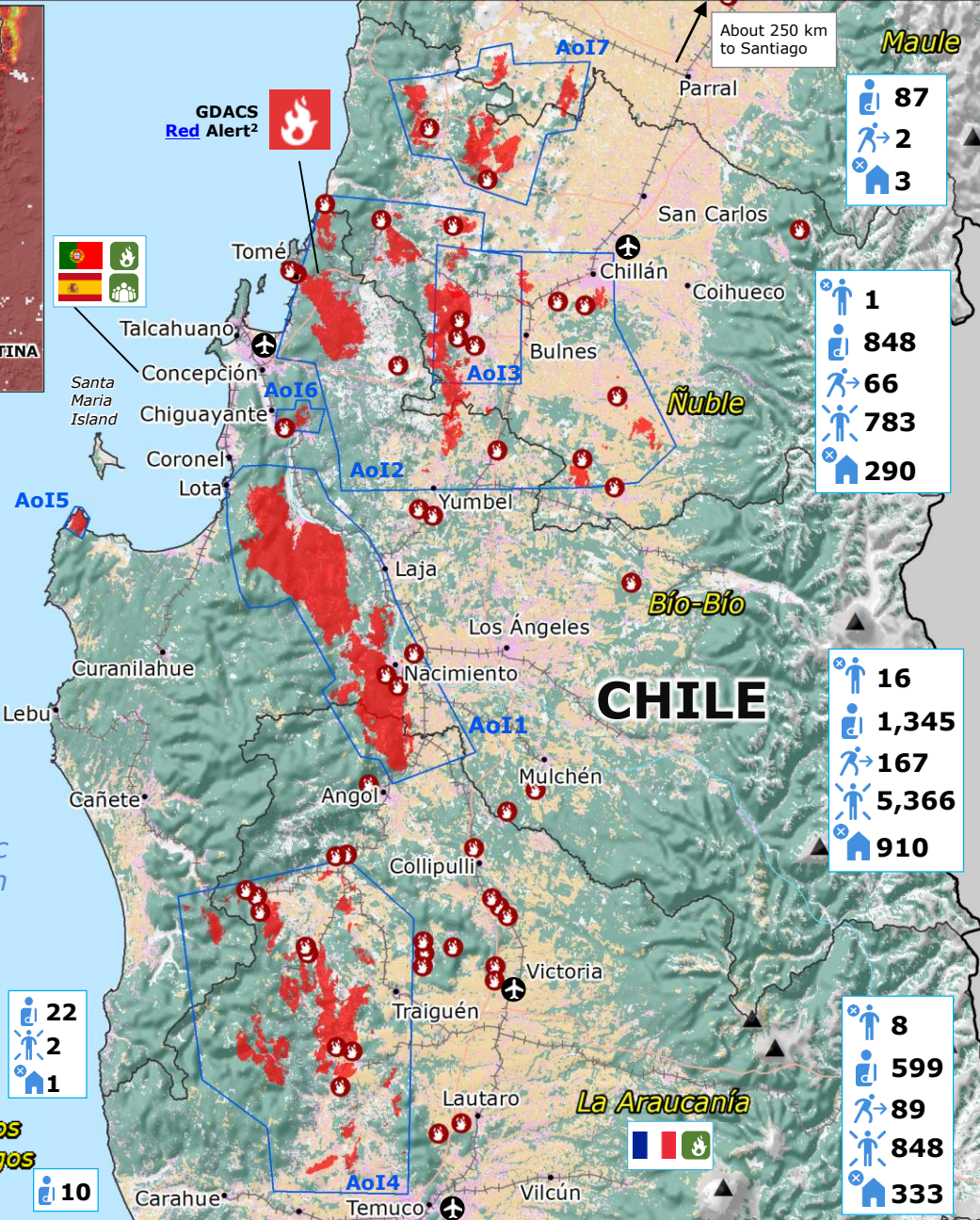
- Forests
- Cropland
- Built-up area

Other symbols:

- Volcano
- Road Railway
- Airport
- Region boundary
- Country border

Fires situation as of 14 Feb
Source: [CONAF](#)

- Area with active fire on 14 Feb



Impact assessment

As of 14 Feb at 23:09 local time
Source: [SENAPRED](#)

- 25 Fatalities
- 2,911 Injured people
- 324 Sheltered people
- 6,999 Affected people
- 1,537 Destroyed houses
- 20 Affected educational facilities

AoI	Burned area detected (ha)	Last day of detection
3	--	06 Feb
5	1,628.3	10 Feb
2	65,165	11 Feb
4	66,814	12 Feb
7	23,451.2	13 Feb
1	94,577	14 Feb
6	2,327.6	14 Feb

ARGENTINA

¹The **fire danger forecast** module of GWIS generates daily maps of forecasted fire danger level using numerical weather predictions.
²GDACS Red alert: Potentially severe disaster with the likelihood of international assistance.