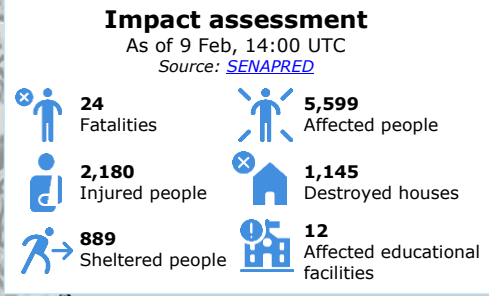
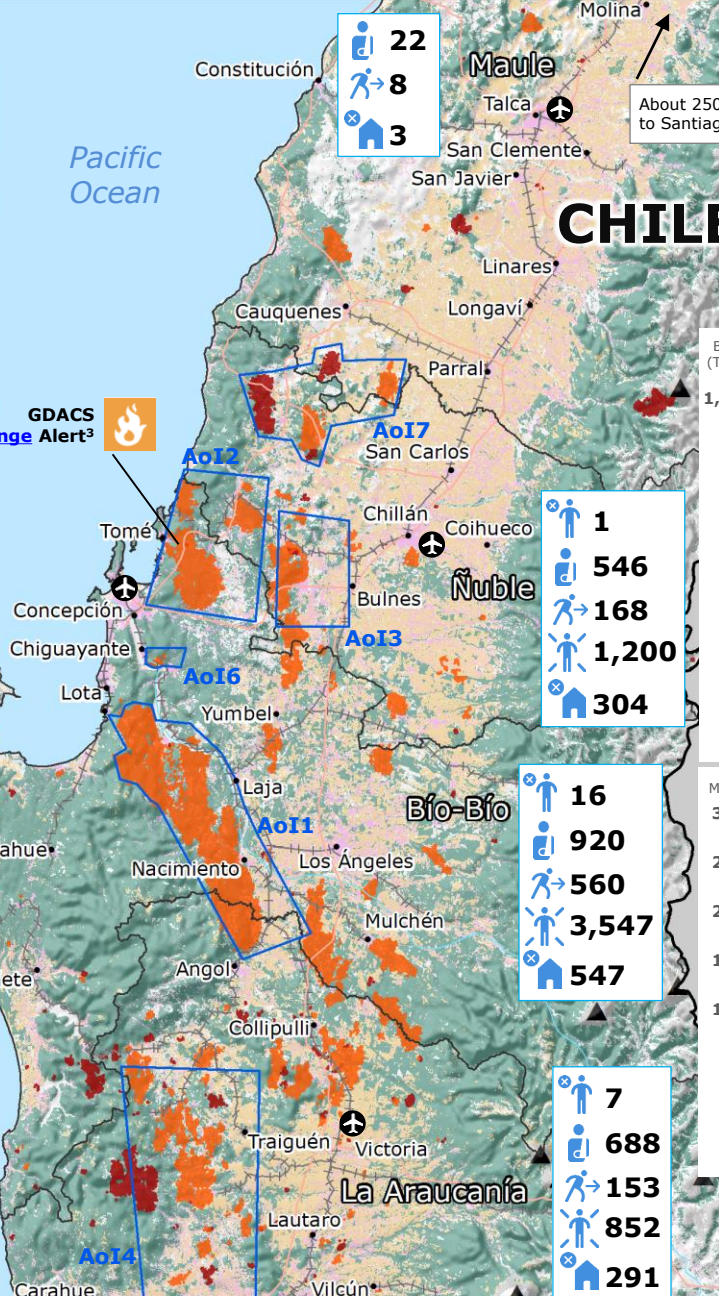
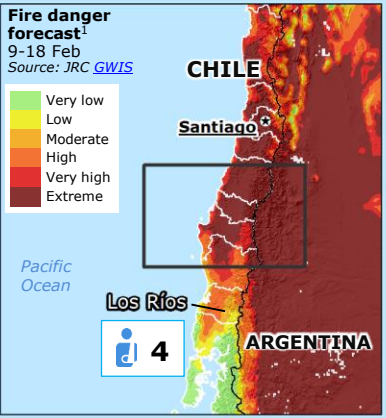


# Chile | Wildfires and UCPM Activation



**UCPM Activation and response** as of 8 Feb

On 5 February a request for assistance was advanced by Chile for Aerial Forest Firefighting Capacities (AFF), Ground forest fire fighting module (GFF) units, and fire behavior analysts teams. Accepted offers:

- Two GFF units of 141 firefighters, coordination experts, and medical personnel.
- Two GFF units of 80 pax in total.
- One GFF type 1 (back fire expert brigade) with 9 pax, one GFF type 2 of 19 pax, and 1 Forest Firefighting Assessment and Advisory Team (FAST) composed by 10 pax.
- A ERCC Liaison officer is deployed to the area from 8 to 22 February.
- Copernicus ([EMSR647](#)) was activated, 15 maps produced so far.

**JRC Global Wildfire Information System**  
**Near Real Time<sup>2</sup> detection**  
Source: [GWIS](#)

- Burnt areas 1-31 Jan
- Burnt areas 1-08 Feb

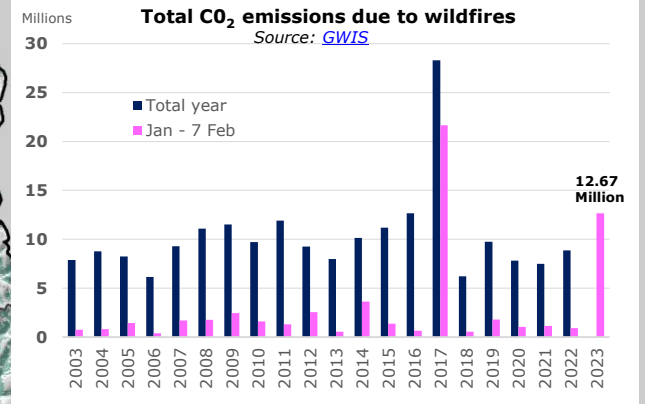
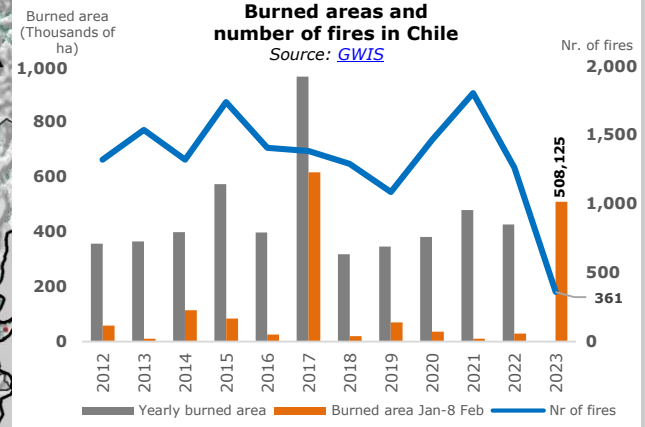
**Copernicus EMSR647 Activation**

- Area of Interest (AoI)
- Region boundary
- Country border

**Land cover**  
Source: [Copernicus Global Land cover, GHSL, BCN](#)

- Forests
- Cropland
- Built-up area

**Other symbols:** Volcano, Road, Railway, Airport



© European Union, 2023. Map produced by the JRC. The boundaries and the names shown on this map do not imply official endorsement or acceptance by the European Union.

<sup>1</sup>The [fire danger forecast](#) module of GWIS generates daily maps of forecasted fire danger level using numerical weather predictions.  
<sup>2</sup>GWIS Near Real Time is only based on thermal anomalies.  
<sup>3</sup>GDACS Orange alert Potential local disaster, international assistance might be required.