

# Iceland | Volcanic eruption in Reykjanes peninsula

**Key facts** as of 18 Mar (Source: [grindavik.is](http://grindavik.is))

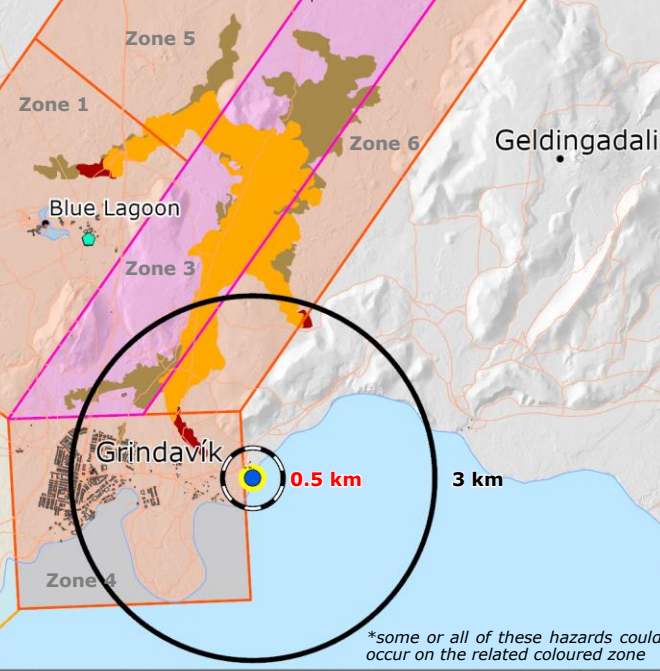
- Emergency level** alert re-issued on 16 Mar
- Evacuation of Grindavík as of 16 Mar
- Road 43 impassable
- 3 Destroyed houses by lava flow of 14 Jan
- Road 427 temporarily closed
- UCPM** Prevention and Preparedness mission took place between 22 and 29 November 2023.

**Volcanic hazard unrest**

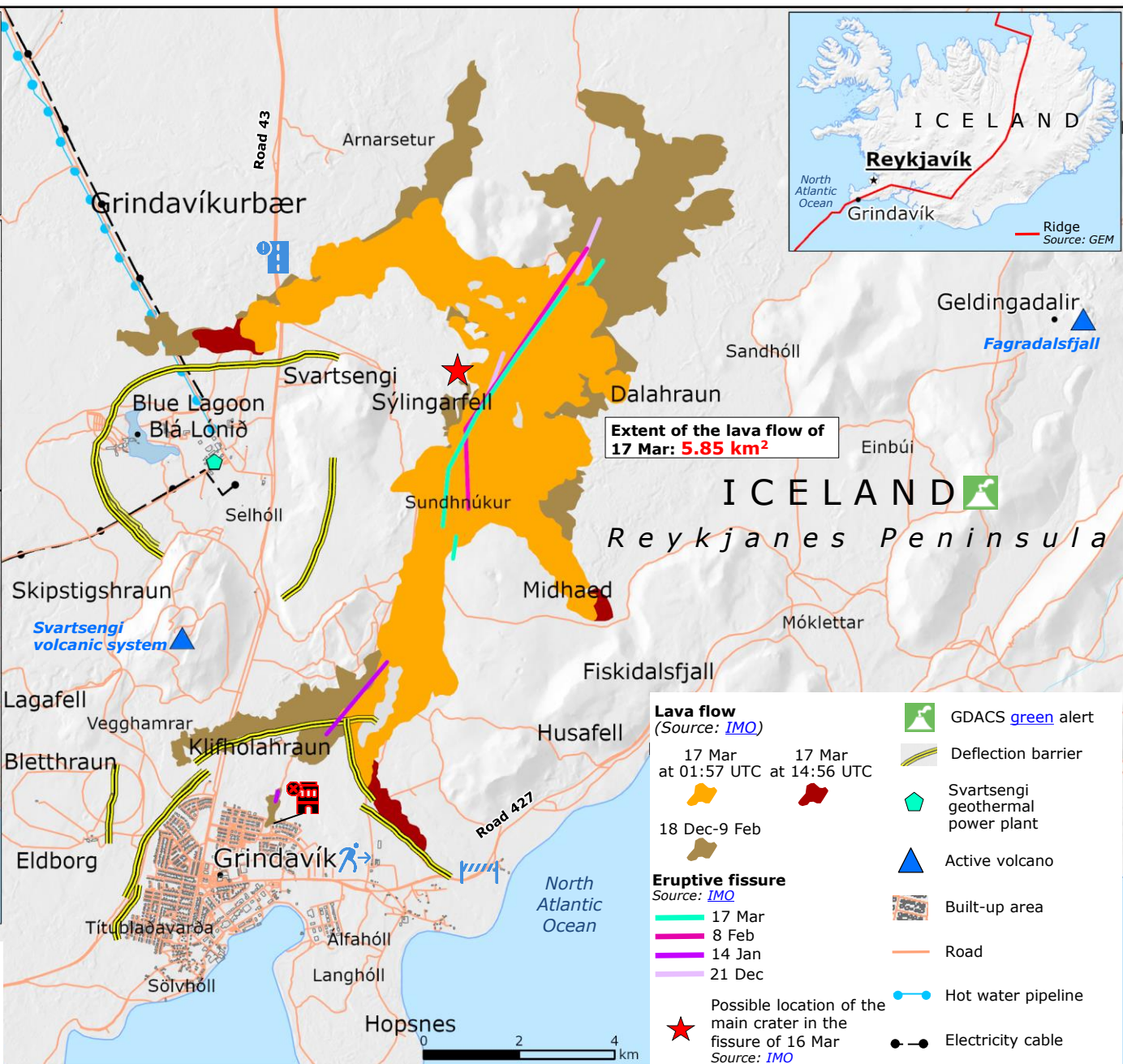
- (Source: [IMO](http://IMO))
- Very high (sinkholes, fault movements, lava flow, tephra, gas pollution, eruptive fissures)
  - High (sinkholes, fault movements, lava flow, tephra\*)

**Volcanic hazard for lava flow and seawater interaction**

- (Source: [IMO](http://IMO))
- Possible location of the contact between lava and seawater
  - Estimated area affected by volcanic gases and tephra
  - Area of potentially lethal health hazard



Previous ECHO Daily Map on the volcanic activity are on the [ERCC Portal](http://ERCC Portal).



- Lava flow** (Source: [IMO](http://IMO))
- 17 Mar at 01:57 UTC
  - 17 Mar at 14:56 UTC
  - 18 Dec-9 Feb
- Eruptive fissure** (Source: [IMO](http://IMO))
- 17 Mar
  - 8 Feb
  - 14 Jan
  - 21 Dec
- GDACS [green](http://green) alert
  - Deflection barrier
  - Svartsengi geothermal power plant
  - Active volcano
  - Built-up area
  - Road
  - Hot water pipeline
  - Electricity cable
- Possible location of the main crater in the fissure of 16 Mar (Source: [IMO](http://IMO))

