

# Iceland | Volcanic eruption in Reykjanes peninsula

**Key facts** as of 12 Feb (Source: [Iceland Gov.](#), [Iceland CP](#))

- Emergency level** alert re-issued on 8 Feb
- Section of **pipeline broken** by lava flow on 8 Feb
- Hot water** not available
- Electricity** shortage
- Partial **closure of Grindavík** (temporary access for residents)
- Partial/temporary access to **roads** to Grindavík
- 3 Destroyed houses by lava flow
- Damaged/interrupted roads by lava flow



**UCPM** activation on 20 Nov: 5-expert from DE, FI and IT + 1 ERCC Liaison Officer deployed from 22 to 29 Nov.

**Lava flow** (Source: [IMO](#), [Iceland Gov.](#))

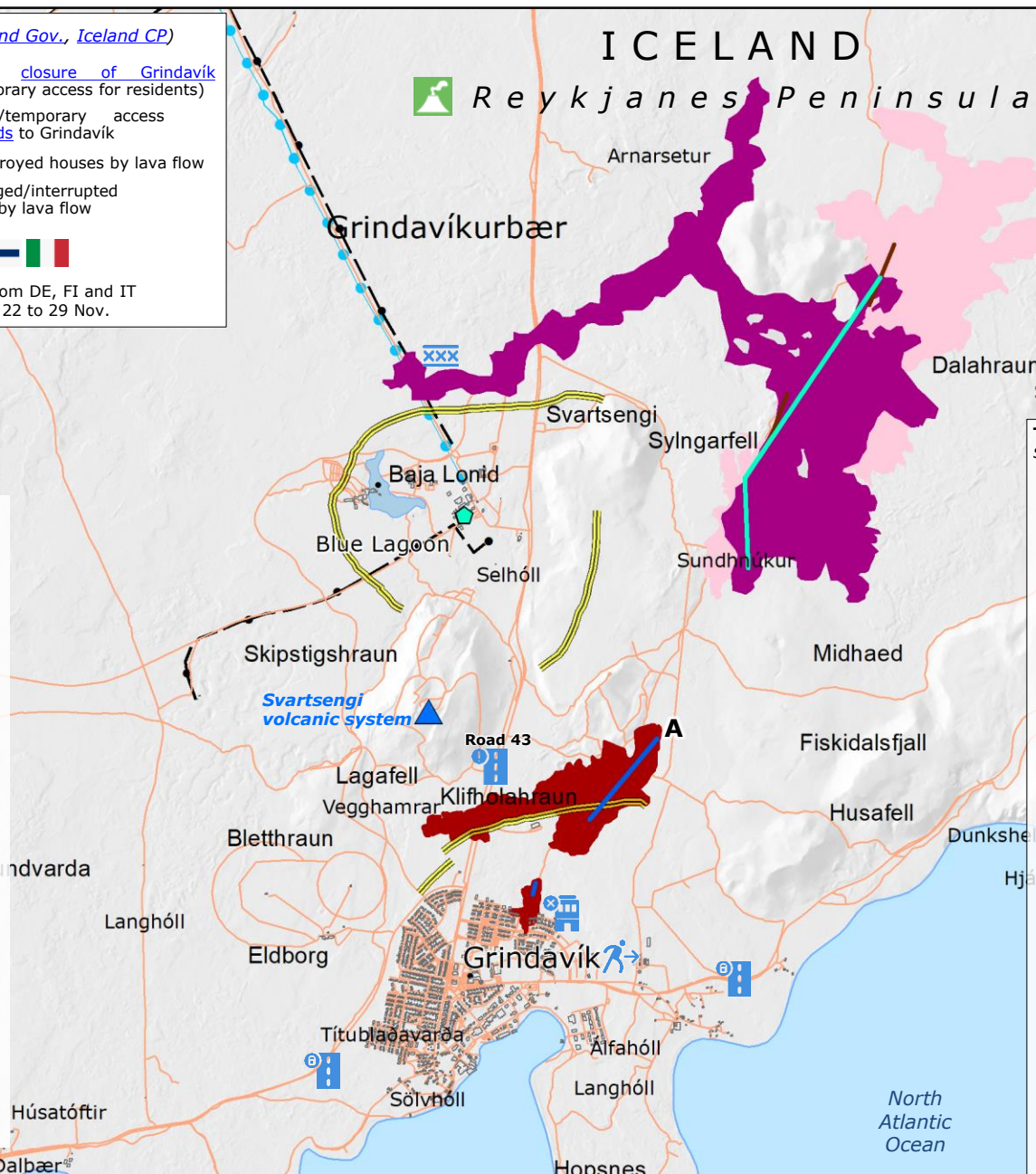
- 18-21 Dec
- 14 Jan
- 8 Feb 6.06 UTC

**Eruptive fissure** (Source: [IMO](#))

- 21 Dec
- 14 Jan
- 8 Feb
- Deflection barrier
- Svartsengi geothermal power plant
- Active volcano
- Built-up area
- Road
- Hot water pipeline
- Electricity cable
- GDACS **green** alert

Previous ECHO Daily Map on the volcanic activity on [ERCC Portal](#).

© European Union, 2024. Map produced by the JRC. The boundaries and the names shown on this map do not imply official endorsement or acceptance by the European Union.



**Timeline of volcanic events**

- Source: [IMO](#), [DG ECHO](#), [Iceland CP](#), [Iceland Gov.](#)
- 25 Oct Increase of the **seismic activity**.
  - 11 Nov Grindavík residents evacuation.
  - 12 Nov Deformation started.
  - 20 Nov UCPM activation.
  - 27 Nov Svartsengi power plant deflection barrier construction.
  - 18 Dec First eruption phase: lava flow close to Sundhnúkagigar.
  - 21 Dec End of first eruption phase.
  - 22 Dec Alert level downgraded from emergency to danger. Grindavík residents returned to houses.
  - 14 Jan New preventative evacuations Grindavík residents. 3 houses have been destroyed following the event.
  - 14 Jan Two lava fissure openings affecting roads/buildings (northern Grindavík).
  - 8 Feb New volcanic eruption at 6.06 UTC in the area north of Sylingarfell Mount. A dark plume rose from one part of the eruptive fissure due to magma interaction with groundwater which resulted in a slight explosive activity. Pipeline broken.
  - 9 Feb The third eruption phase ended.