

# Iceland | Volcanic eruption in Reykjanes peninsula



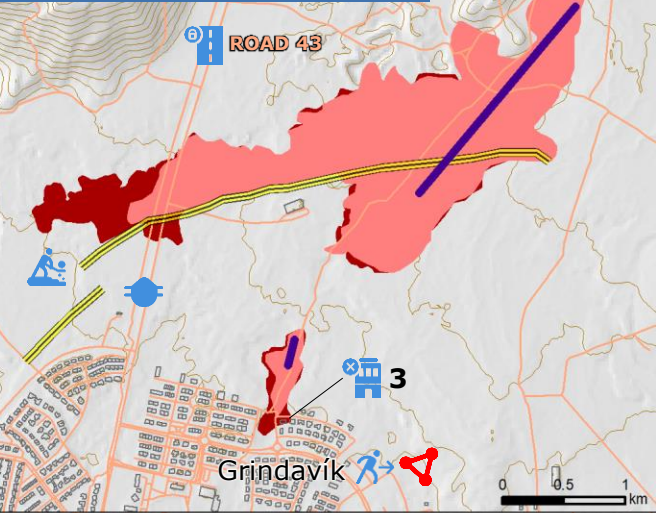
## Key facts as of 16 Jan (Source: [Government of Iceland](#), [Iceland CP](#), [UST](#))

- Alert upgraded from danger to emergency level as of 14 Jan.
- No power and no water available in Grindavík (communications system damaged)
- 14 Jan: As precaution, 3 700 residents of Grindavík have been evacuated
- On 16 Jan at 7.30 UTC, gas measures (SO2, H2S) are at good level.
- 3 Destroyed houses
- Roads 43, 425, 426, 427 closed
- Lava deflection barrier built around Svartsengi power plant and north of Grindavík.

## UCPM response

- 20 Nov: Iceland activated the UCPM for technical expertise
- 22-29 Nov: ERCC deployed a 5-expert EUCPT from DE, FI and IT
  - 2 coordination experts, 2 high capacity water pumping experts, 1 Information Management expert, (plus) 1 ERCC Liaison Officer. Request has been met.

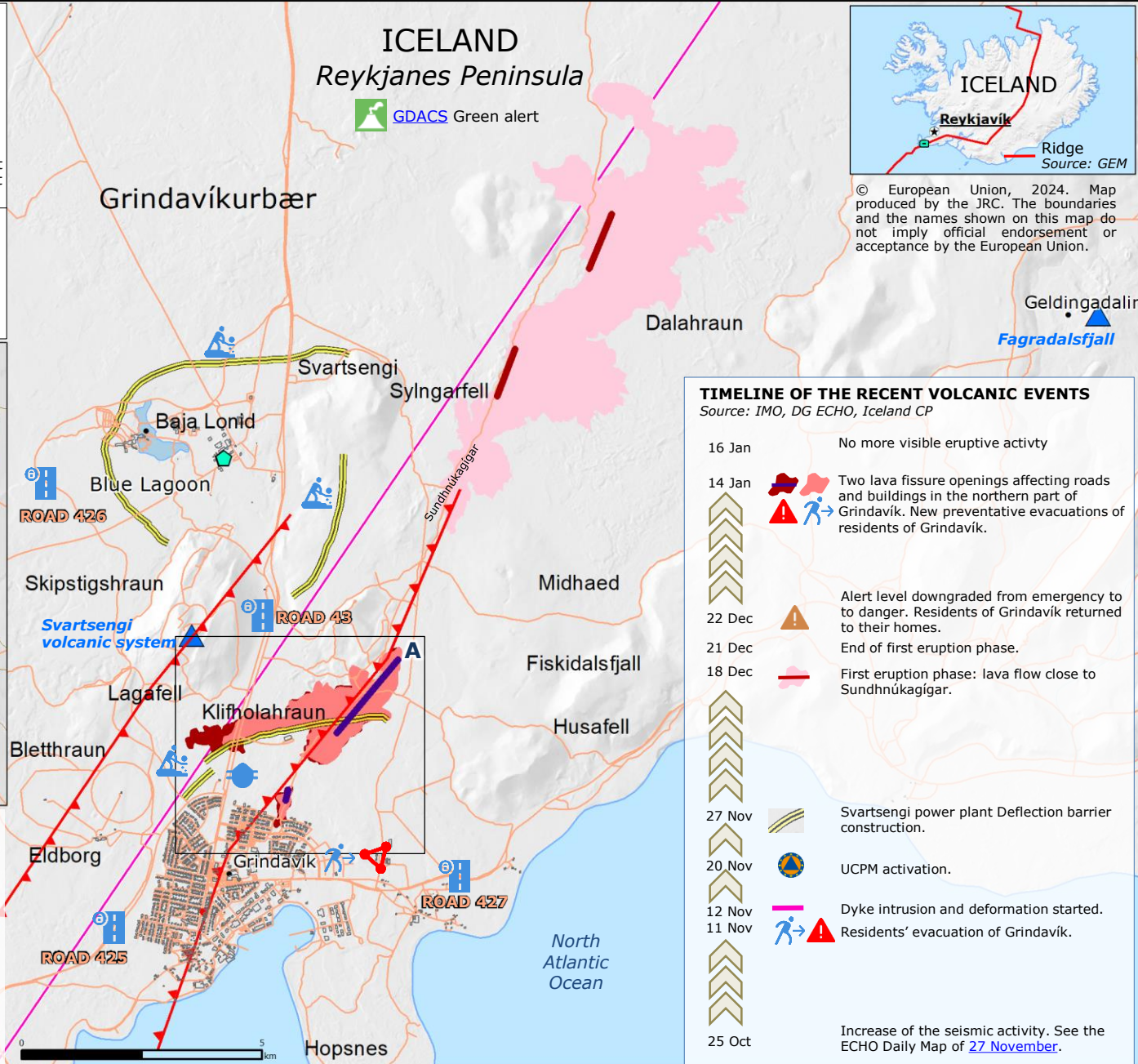
## Focus on the lava flow of 14 Dec north of Grindavík Source: [IMO](#)



**Lava flow**  
Source: [IMO](#)

18-21 Dec 14 Jan 14 Jan  
13.50 UTC 16.15 UTC

- Eruptive fissure as of 21 Dec
- Eruptive fissure as of 14 Jan
- Graben boundary
- Dyke intrusion
- Deflection barrier
- Svartsengi geothermal power plant
- Active volcano
- Built-up area
- Road



© European Union, 2024. Map produced by the JRC. The boundaries and the names shown on this map do not imply official endorsement or acceptance by the European Union.

## TIMELINE OF THE RECENT VOLCANIC EVENTS

Source: [IMO](#), [DG ECHO](#), [Iceland CP](#)

- 16 Jan No more visible eruptive activity
- 14 Jan Two lava fissure openings affecting roads and buildings in the northern part of Grindavík. New preventative evacuations of residents of Grindavík.
- 22 Dec Alert level downgraded from emergency to to danger. Residents of Grindavík returned to their homes.
- 21 Dec End of first eruption phase.
- 18 Dec First eruption phase: lava flow close to Sundhnúkagígur.
- 27 Nov Svartsengi power plant Deflection barrier construction.
- 20 Nov UCPM activation.
- 12 Nov Dyke intrusion and deformation started.
- 11 Nov Residents' evacuation of Grindavík.
- 25 Oct Increase of the seismic activity. See the ECHO Daily Map of [27 November](#).