

Iceland | Volcanic eruption in Reykjanes peninsula

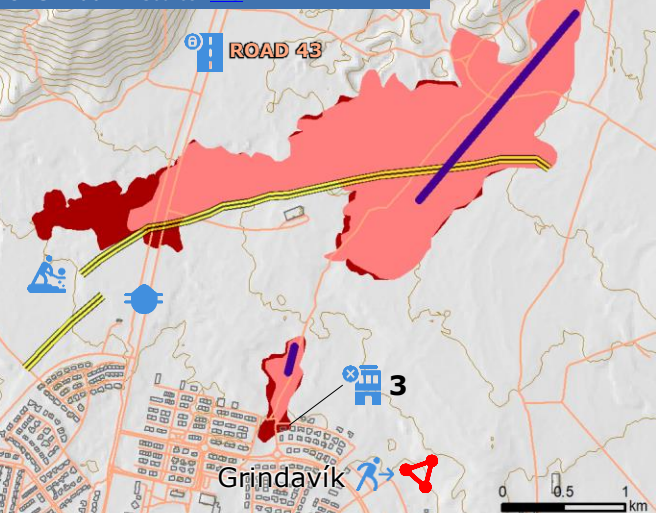
Key facts as of 16 Jan (Source: [Government of Iceland](#), [Iceland CP](#), [UST](#))

- Alert upgraded from danger to emergency level as of 14 Jan.
- No power and no water available in Grindavík (communications system damaged)
- 14 Jan: As precaution, 3 700 residents of Grindavík have been evacuated
- On 16 Jan at 7.30 UTC, gas measures (SO2, H2S) are at good level.
- 3 Destroyed houses
- Roads 43, 425, 426, 427 closed
- Lava deflection barrier built around Svartsengi power plant and north of Grindavík.

UCPM response

- 20 Nov: Iceland activated the UCPM for technical expertise
- 22-29 Nov: ERCC deployed a 5-expert EUCPT from DE, FI and IT
 - 2 coordination experts, 2 high capacity water pumping experts, 1 Information Management expert, (plus) 1 ERCC Liaison Officer. Request has been met.

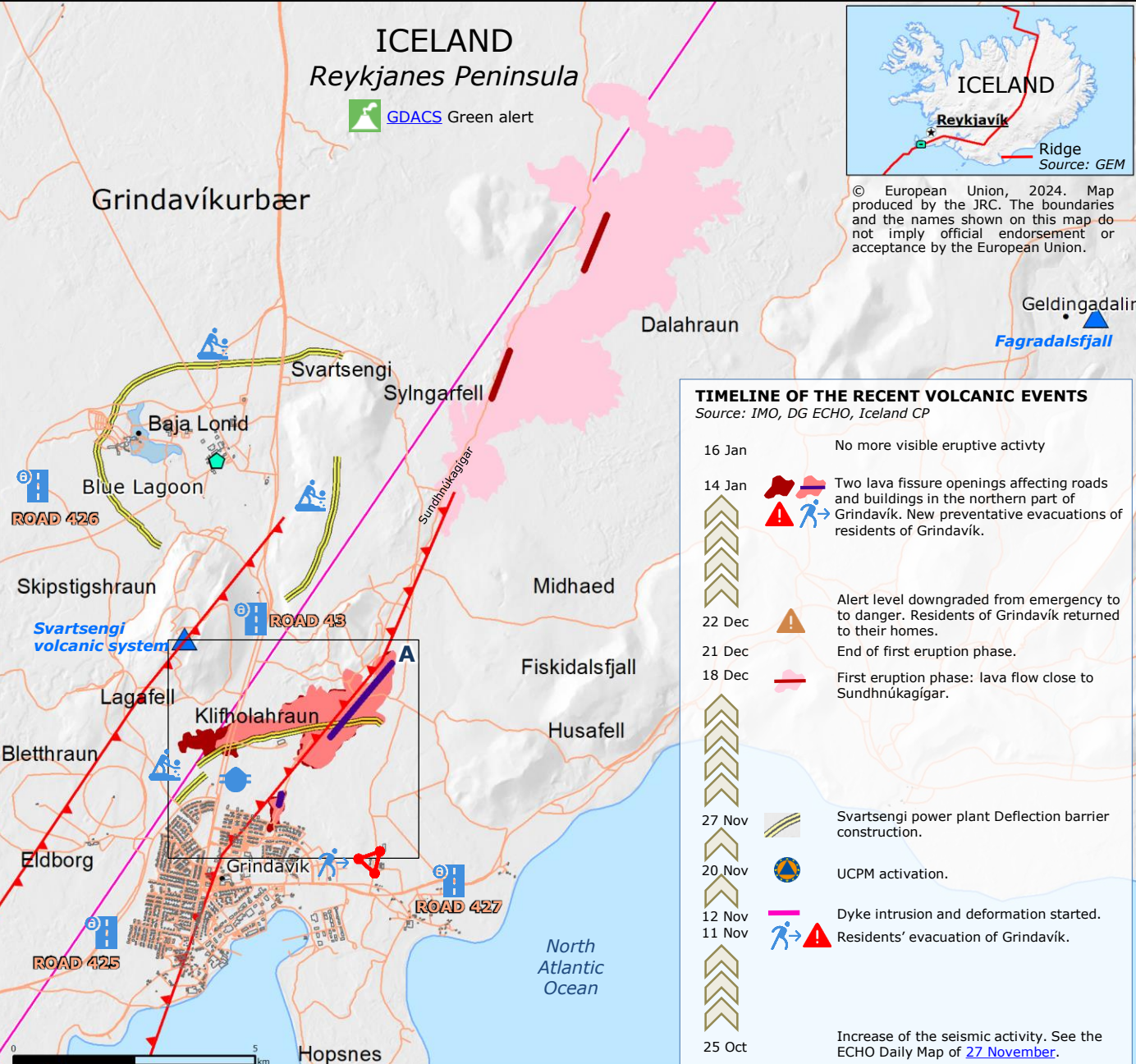
Focus on the lava flow of 14 Dec north of Grindavík Source: [IMO](#)



Lava flow
Source: [IMO](#)

18-21 Dec 14 Jan 14 Jan
13.50 UTC 16.15 UTC

- Eruptive fissure as of 21 Dec
- Eruptive fissure as of 14 Jan
- Graben boundary
- Dyke intrusion
- Deflection barrier
- Svartsengi geothermal power plant
- Active volcano
- Built-up area
- Road



© European Union, 2024. Map produced by the JRC. The boundaries and the names shown on this map do not imply official endorsement or acceptance by the European Union.

TIMELINE OF THE RECENT VOLCANIC EVENTS

Source: [IMO](#), [DG ECHO](#), [Iceland CP](#)

- 16 Jan No more visible eruptive activity
- 14 Jan Two lava fissure openings affecting roads and buildings in the northern part of Grindavík. New preventative evacuations of residents of Grindavík.
- 22 Dec Alert level downgraded from emergency to to danger. Residents of Grindavík returned to their homes.
- 21 Dec End of first eruption phase.
- 18 Dec First eruption phase: lava flow close to Sundhnúkagigar.
- 27 Nov Svartsengi power plant Deflection barrier construction.
- 20 Nov UCPM activation.
- 12 Nov Dyke intrusion and deformation started.
- 11 Nov Residents' evacuation of Grindavík.
- 25 Oct Increase of the seismic activity. See the ECHO Daily Map of [27 November](#).