

# Iceland | Volcanic eruption in Reykjanes peninsula

## Key facts as of 20 Dec (Source: Iceland CP #1, #2, IV, IMO #1, #2)

- Alert upgraded from danger to emergency level
- Sulphur dioxide gas measures currently not of concern
- Grindavik town, Blue Lagoon locality and Svartsengi power plant area evacuated when eruption started
- Building of lava defence wall around Svartsengi power plant (75% completed)
- Grindavik town (approx. 3 700 residents) and Blue Lagoon locality completely closed
- GDACS Orange alert

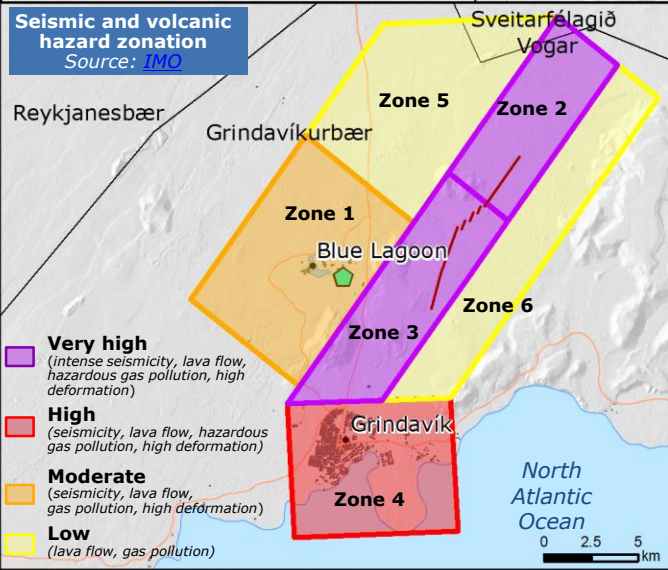
### UCPM response



- 20 Nov: Iceland activated the UCPM for technical expertise
- 22-29 Nov: ERCC deployed a 5-expert EUCPT from DE, FI and IT
  - 2 coordination experts
  - 2 high capacity water
  - pumping experts
  - 1 Information Management expert
  - (plus) 1 ERCC Liaison Officer

## Seismic and volcanic hazard zonation

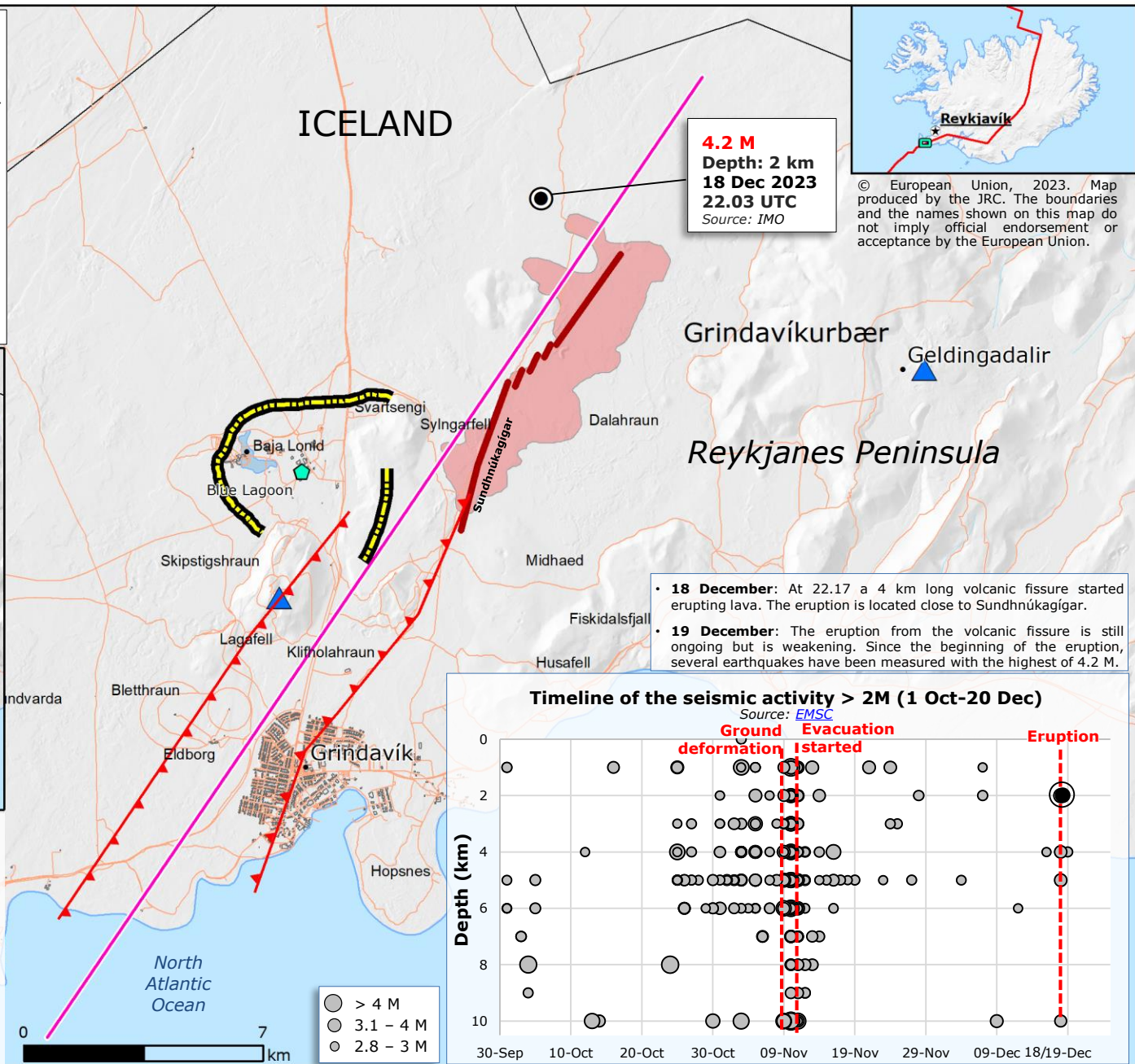
Source: IMO



- Very high** (intense seismicity, lava flow, hazardous gas pollution, high deformation)
- High** (seismicity, lava flow, hazardous gas pollution, high deformation)
- Moderate** (seismicity, lava flow, gas pollution, high deformation)
- Low** (lava flow, gas pollution)

## Eruption event

- Lava flow
- Eruptive fissure
- Graben boundary
- Dyke intrusion
- Ridge
- Defence wall
- 4.2M earthquake of 18 Dec
- Svartsengi geothermal power plant
- Active volcano
- Built-up area
- Road
- Municipality border



**4.2 M**  
**Depth: 2 km**  
**18 Dec 2023**  
**22.03 UTC**  
 Source: IMO



© European Union, 2023. Map produced by the JRC. The boundaries and the names shown on this map do not imply official endorsement or acceptance by the European Union.

- 18 December:** At 22.17 a 4 km long volcanic fissure started erupting lava. The eruption is located close to Sundhnúkaággar.
- 19 December:** The eruption from the volcanic fissure is still ongoing but is weakening. Since the beginning of the eruption, several earthquakes have been measured with the highest of 4.2 M.

## Timeline of the seismic activity > 2M (1 Oct-20 Dec)

Source: EMSC

