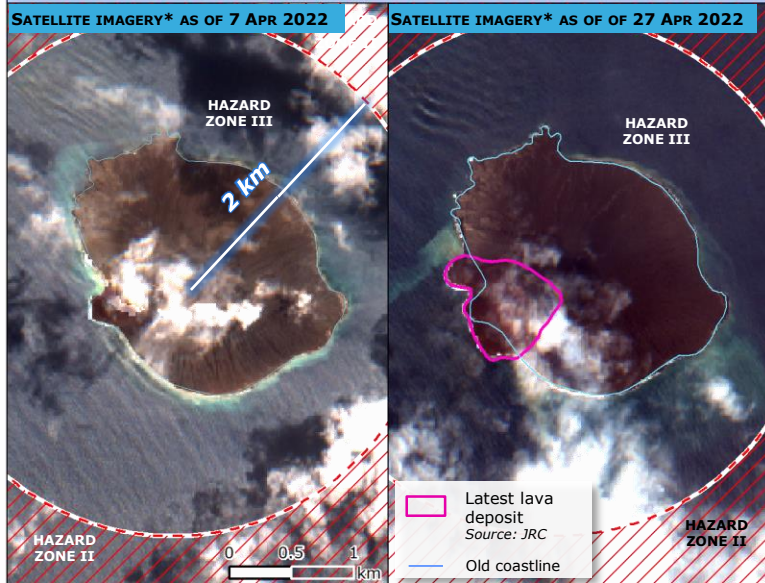


Indonesia | Anak Krakatau volcanic eruption

On 24 April 2022, Anak Krakatau erupted and the ash column reached up to 3 km high from the summit of the volcano. National Authorities raised the Alert Level to III (Standby Phase).

PAST ACTIVITY

On 22 December 2018 a Tsunami was generated by the collapse of the Anak Krakatau Volcano, with waves propagating in all directions inside the Sunda Strait, the sea portion between the Java and Sumatra Islands. The Tsunami caused **437** fatalities.



HAZARD ZONE III

- Volcano
- Populated places
- Area frequently affected by lava flow and pyroclastic flow
- Area frequently affected by heavy ash fall and incandescent ballistic projectiles (volcanic bomb) r = 2 km

HAZARD ZONE I

- Area potentially affected by ash fall and probably hit by incandescent ejected rock fragments of lapilli sizes r = 8 km

HAZARD ZONE II

- Area potentially affected by lava flow and pyroclastic flows
- Area potentially affected by heavy ash fall and possibly affected by incandescent ejected rock fragments by pebble size r = 5 km

**Source: Sentinel-2 L1C EO Browser*
An additional Daily Map on Krakatau Tsunami Warning System is available on the [ERCC Portal](#).

© European Union, 2022. Map produced by the JRC. The boundaries and the names shown on this map do not imply official endorsement or acceptance by the European Union.

0 10 20 km

Early Warning System

- JRC IDSL installed
- New JRC IDSL to be installed
- Tide Gauges (BIG)

JRC IDSL: Inexpensive Device for Sea-Level Measurement
BIG: Indonesian Geospatial Information Agency
¹With satellite communication by **BMKG/BAKTI**
²Connection via GSM link by **TELKOMSEL (new tower installed on Sebesi Island)**

