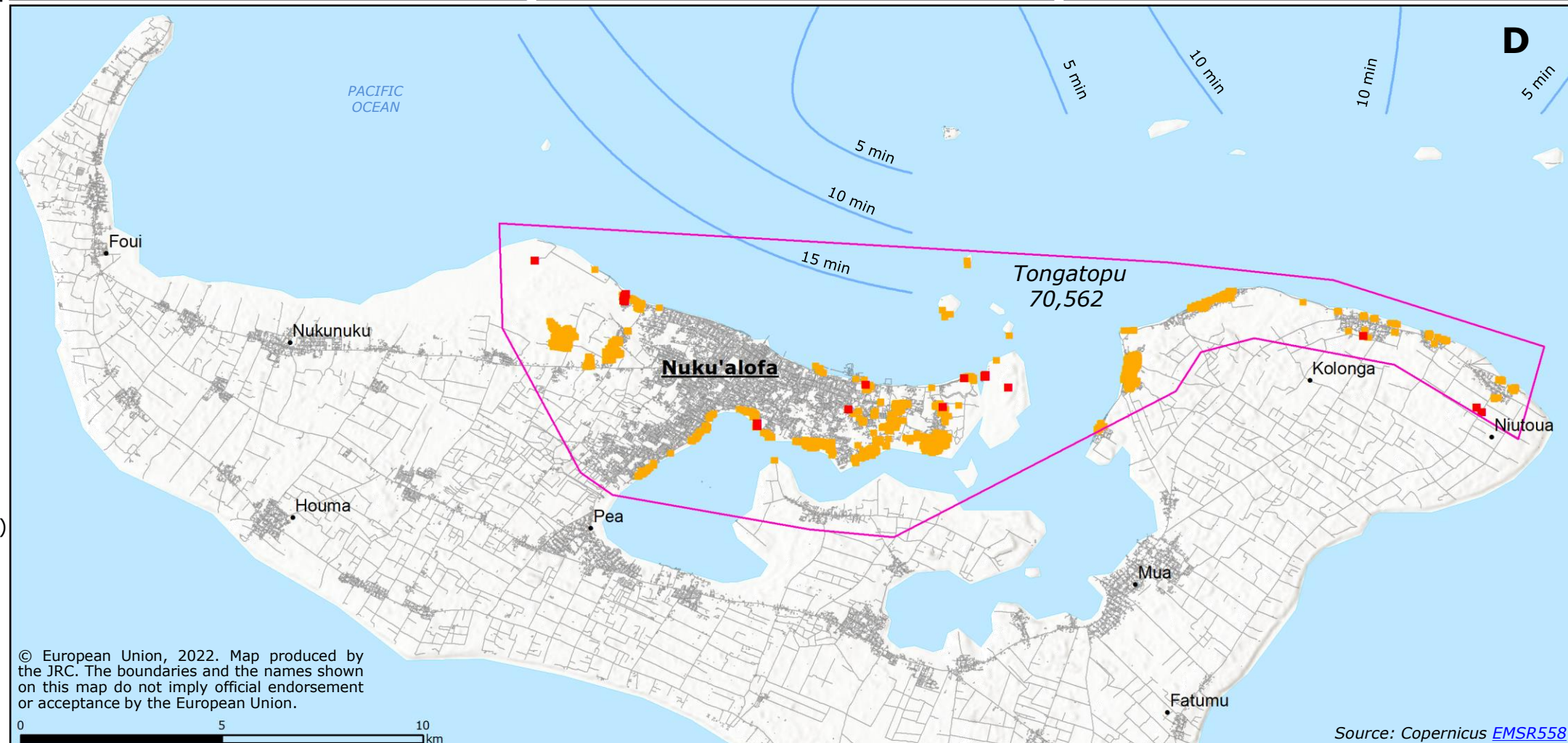
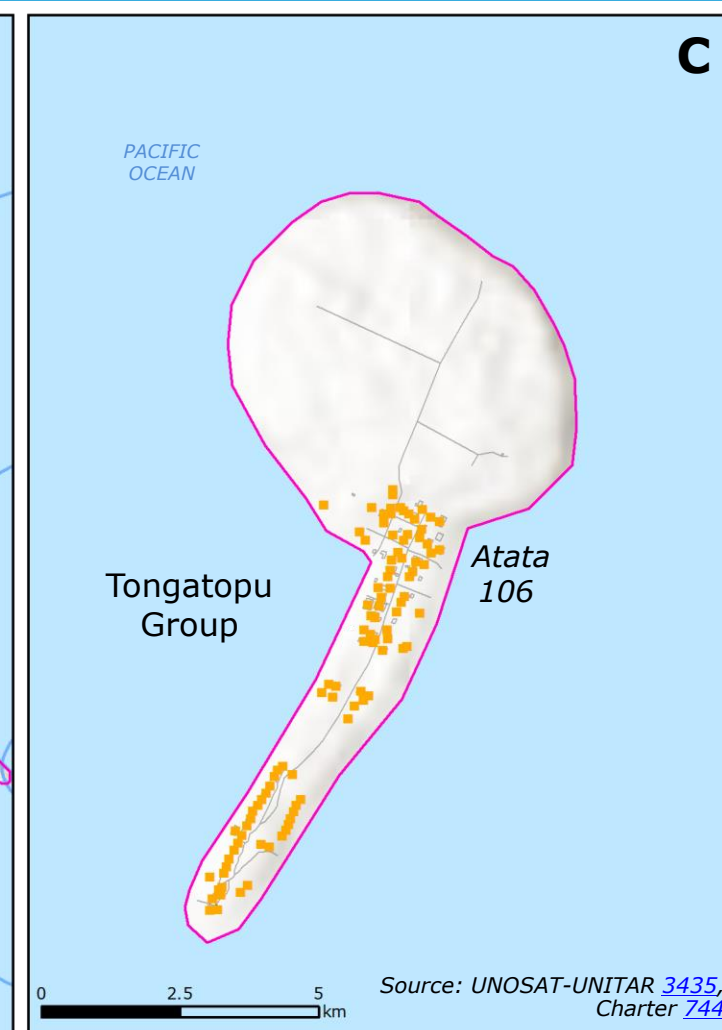
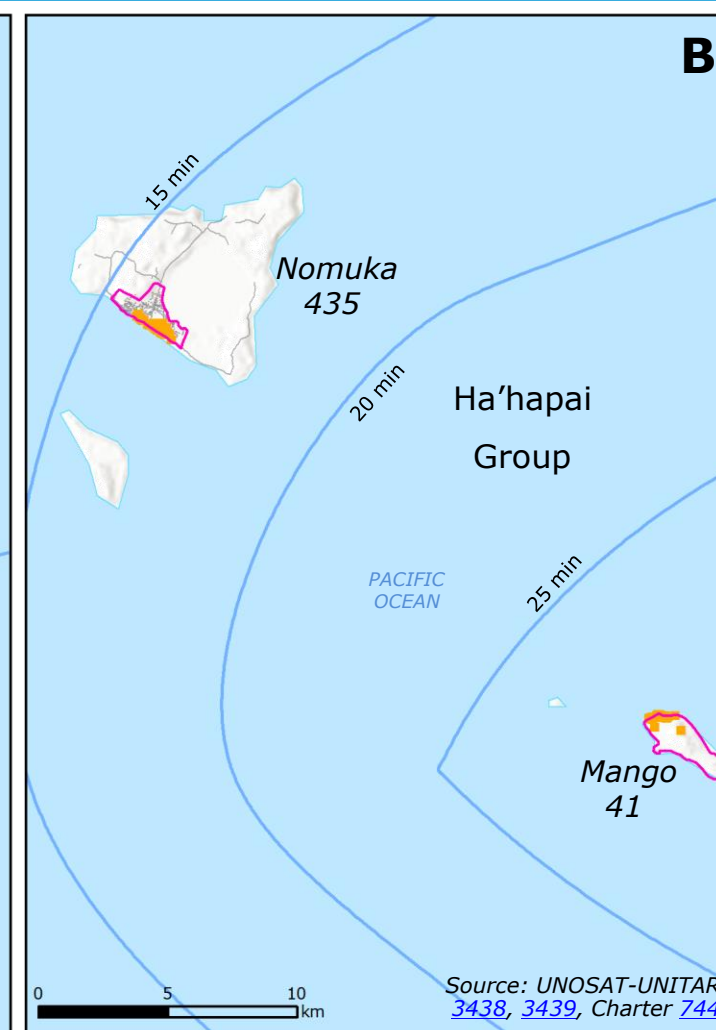
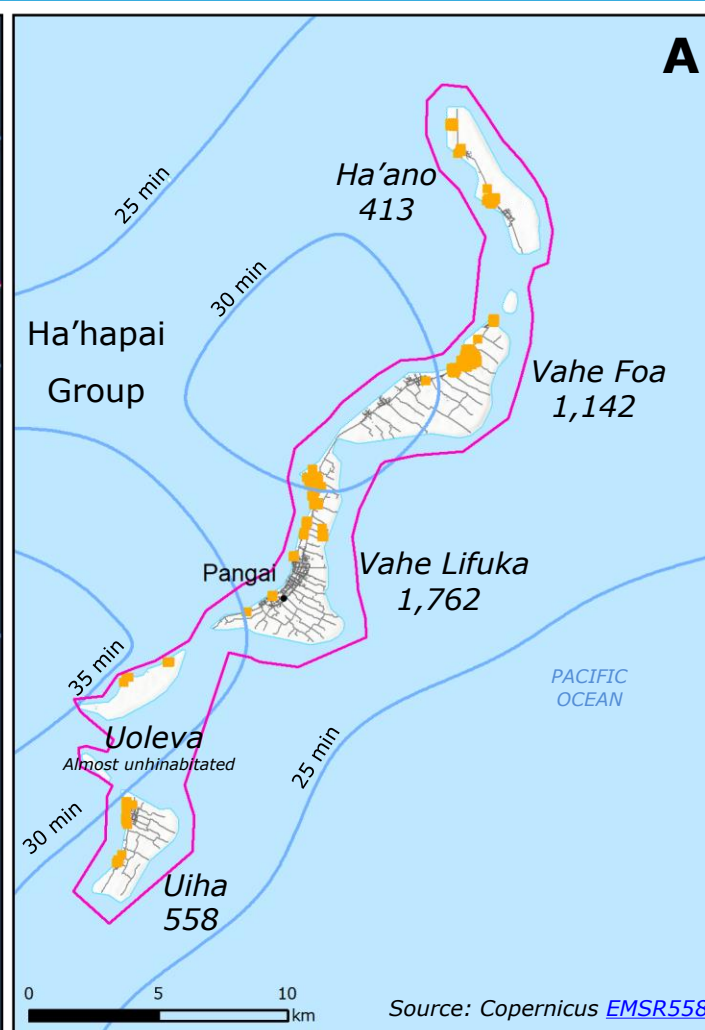
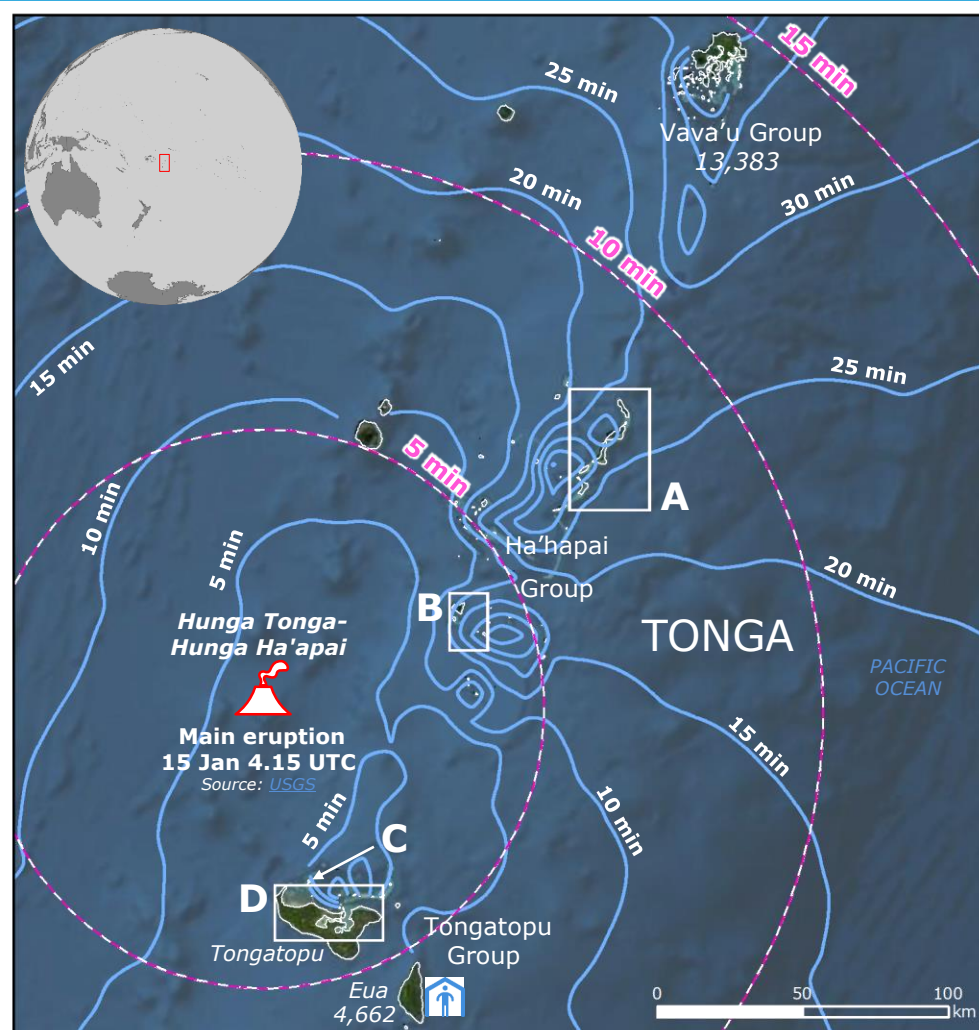


Tonga | Volcanic eruption and tsunami



Situation overview

Source: UN OCHA as of 18 Jan, 19 Jan

- 3** Confirmed fatalities as of 19 Jan
- ~ 90** Sheltered people (*Eua Island*)
- Several injured people
- 84,000** Affected people
- > 150** Destroyed/damaged houses

A request for assistance has been opened on 18 January in the framework of the EU Civil Protection Mechanism (UCPM) based on the public statement from the Office of the Speaker of Tonga Parliament. The same day France offered a water purification module, two smaller water purification units, jerry cans, hygiene kits and shelter toolkits and tarpaulins. The offers are pending approval. The ERCC activated Copernicus EMS in rapid mapping mode (EMSR558) to provide satellite imagery for damage assessment of the affected area.

Humanitarian partners of UN OCHA, reported that the entire population of Tonga (100,209 persons as per 2021 Census) have been impacted by the ash emitted by the volcano and the tsunami.

- Volcano (GDACS Red alert)
- Tsunami travel time (5min) Source: JRC calculation
- Destroyed building
- Damaged/possibly damaged building*
- Soundwave** (5min) Source: JRC calculation
- Built-up area Source: OSM
- Analysis extent
- Road Source: OSM

*Presence of damage proxies and proximity with destroyed/damaged asset
 **Estimated soundwaves propagation of the explosion
 Figures below the name of the islands represent the population (Sources: Tonga Statistics Department, 2021, Tonga Household Listing 2021).

© European Union, 2022. Map produced by the JRC. The boundaries and the names shown on this map do not imply official endorsement or acceptance by the European Union.