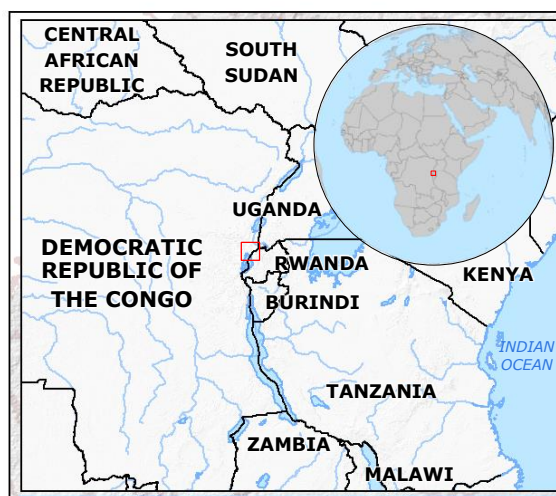


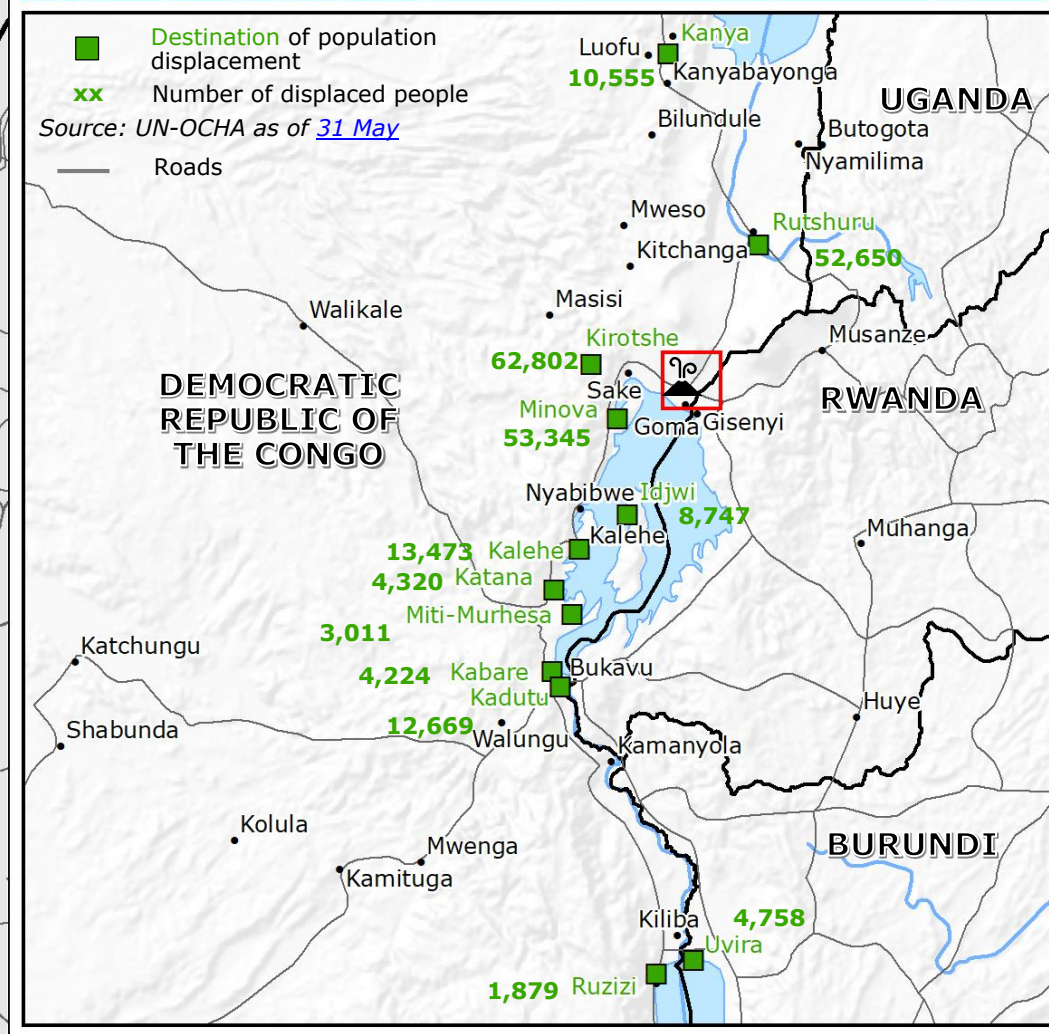
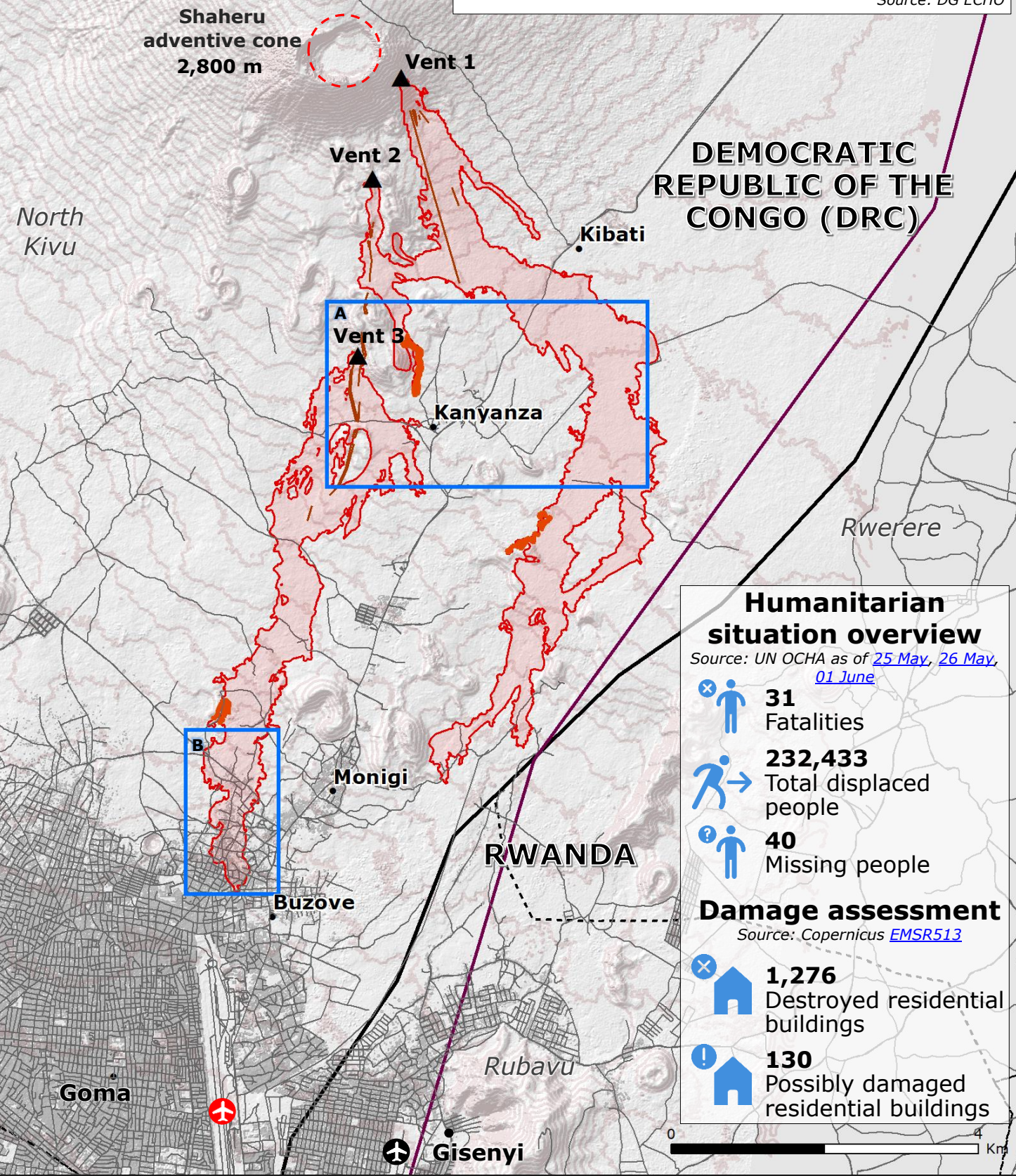
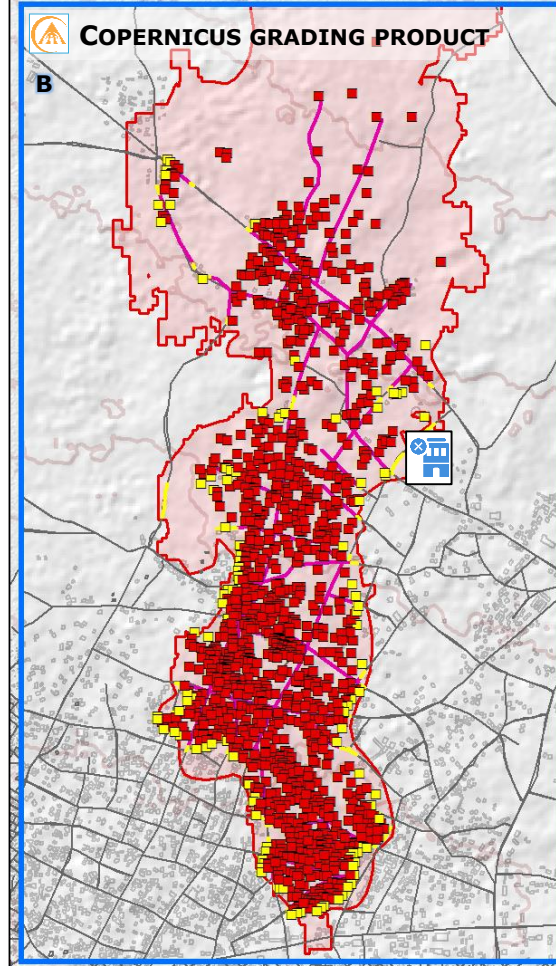
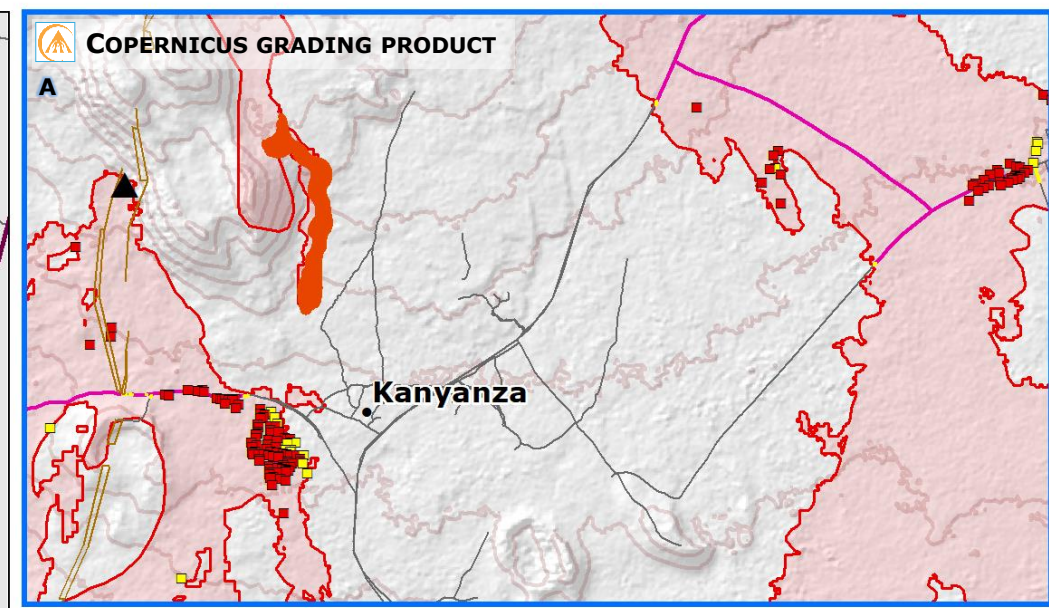
Democratic Republic of the Congo | Mount Nyiragongo eruption



Nyiragongo volcano
3,470 m
 started erupting on the
 22nd May 2021

GDACS
 Red alert

- On 2 June, ERCC received a request from DRC to activate the EU Civil Protection Mechanism (UCPM) following to the volcanic eruption in Mount Nyiragongo and the related seismic activity.
 - The request consists of food and non-food items, WASH items, shelter, medicines and medical equipment.
 - The European Commission has allocated emergency humanitarian funding of **€2 million** for those affected by the eruption.
- Source: DG ECHO



Humanitarian situation overview
 Source: UN OCHA as of 25 May, 26 May, 01 June

- 31 Fatalities
- 232,433 Total displaced people
- 40 Missing people

Damage assessment
 Source: Copernicus EMSR513

- 1,276 Destroyed residential buildings
- 130 Possibly damaged residential buildings

Legend

- Nyiragongo (Source: GDACS, Virunga Volcanoes)
- Volcanic vent
- Volcanic fissure
- Lava flow 23-30 May
- Latest lava flow detection as of 1 Jun
- Copernicus grading product (Source: Copernicus EMSR513)
 - Destroyed building
 - Possibly destroyed building
 - Destroyed road
 - Possibly destroyed road
- Main fault (Source: GEM)
- Damaged waste water station (Source: UNITAR-UNOSAT)
- Airport
- Closed airport (Source: UNOCHA)
- Urban area (Source: HOTOSM)
- Administrative division
- Country border

© European Union, 2021. Map produced by the JRC. The boundaries and the names shown on this map do not imply official endorsement or acceptance by the European Union.