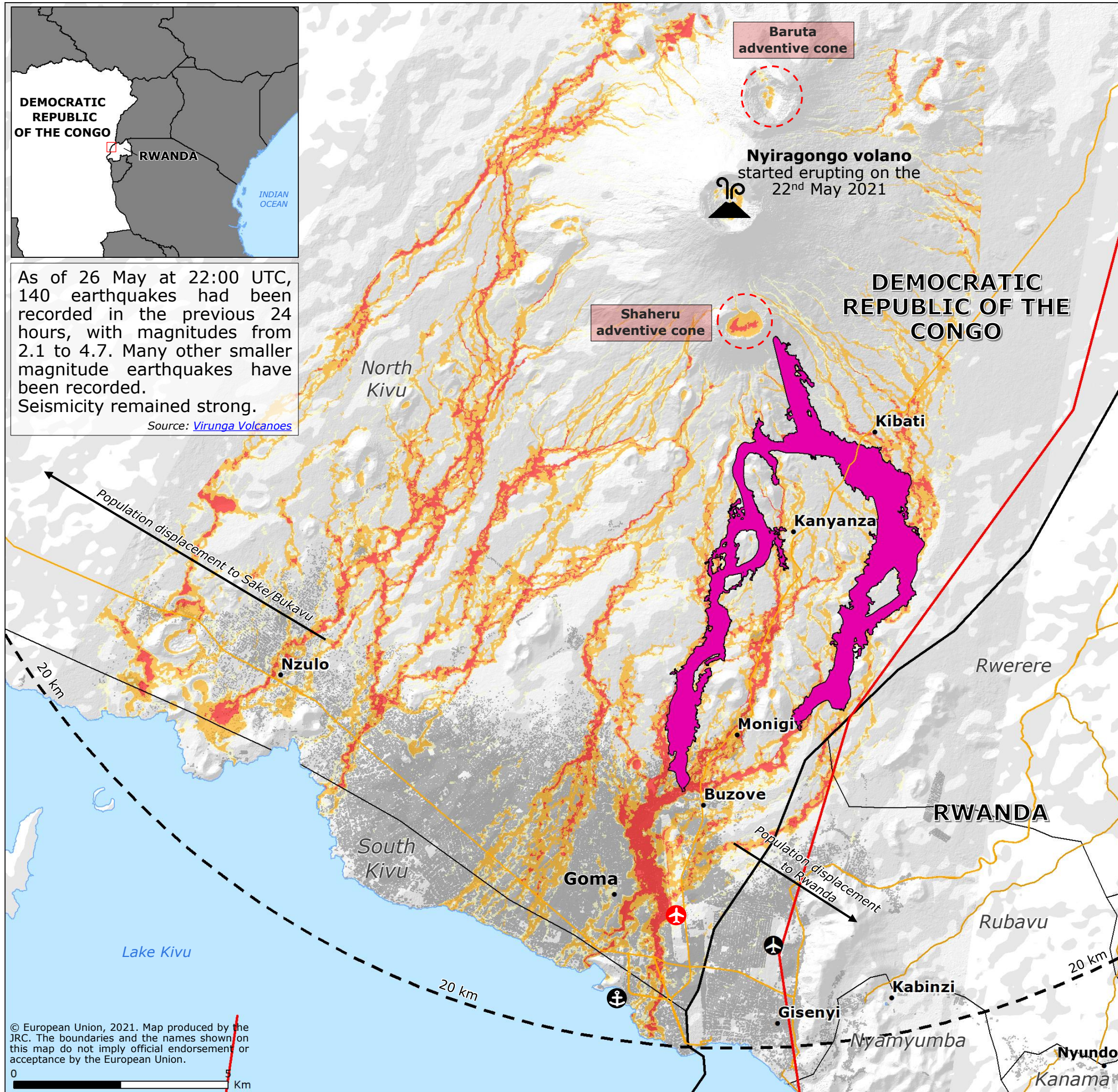


# Democratic Republic of the Congo | Mount Nyiragongo eruption



As of 26 May at 22:00 UTC, 140 earthquakes had been recorded in the previous 24 hours, with magnitudes from 2.1 to 4.7. Many other smaller magnitude earthquakes have been recorded. Seismicity remained strong.  
Source: [Virunga Volcanoes](#)

## Situation overview\*

Source: UN OCHA as of [25 May](#), [26 May](#) (at 15.00 Kinshasa time)

	<b>31</b> Fatalities		<b>&gt; 3,629</b> Destroyed houses
	<b>&gt; 20,000</b> Displaced people		<b>&gt; 12</b> Destroyed schools
	<b>40</b> Missing people		<b>&gt; 3</b> Destroyed health facilities
	<b>715,000</b> Population within 20-km radius from the volcano		

Source: [UNITAR-UNOSAT](#)

\* estimated numbers

	Nyiragongo Source: <a href="#">GDACS</a> , <a href="#">Virunga Volcanoes</a>		Airport temporarily closed
			Airport
			Port
	Lava flow extent as of 25 May Source: <a href="#">UNITAR-UNOSAT ID3291</a> , <a href="#">Copernicus EMSR513</a>		Administrative division
	Lava Flow Hazard Source: <a href="#">Copernicus EMSN047</a>		Main roads
	Very high High Medium		Populated area Source: <a href="#">HOTOSM</a>
	Main fault Source: <a href="#">GEM</a>		Country border

