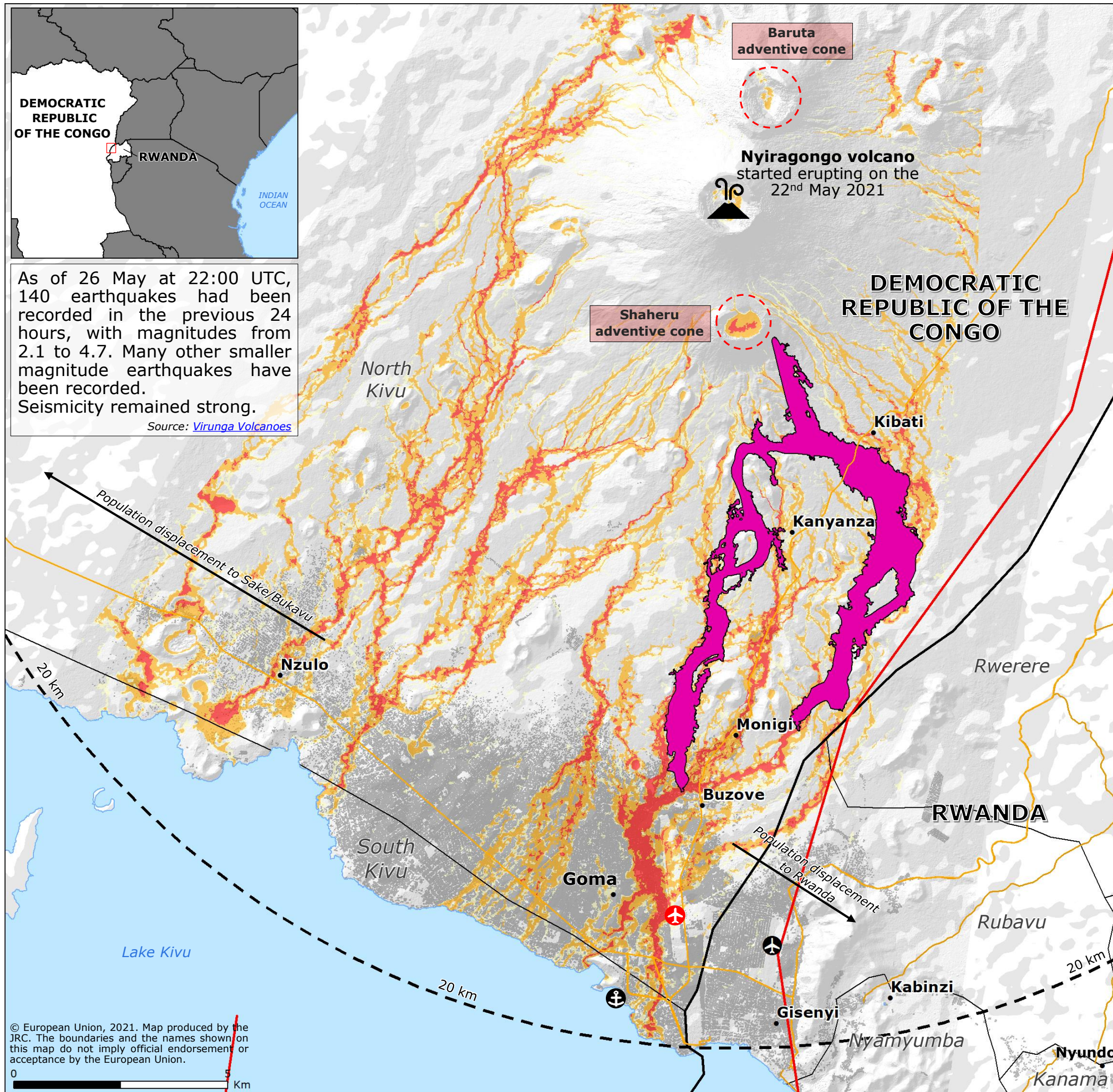


Democratic Republic of the Congo | Mount Nyiragongo eruption



As of 26 May at 22:00 UTC, 140 earthquakes had been recorded in the previous 24 hours, with magnitudes from 2.1 to 4.7. Many other smaller magnitude earthquakes have been recorded. Seismicity remained strong.
Source: [Virunga Volcanoes](#)

Situation overview*

Source: UN OCHA as of [25 May](#), [26 May](#) (at 15.00 Kinshasa time)

- 31** Fatalities
- > 20,000** Displaced people
- 40** Missing people
- 715,000** Population within 20-km radius from the volcano
Source: [UNITAR-UNOSAT](#)
- > 3,629** Destroyed houses
- > 12** Destroyed schools
- > 3** Destroyed health facilities

* estimated numbers

- Nyiragongo
Source: [GDACS](#), [Virunga Volcanoes](#)
- Airport temporarily closed
- Airport
- Port
- Lava flow extent as of 25 May
Source: [UNITAR-UNOSAT ID3291](#), [Copernicus EMSR513](#)
- Very high
- High
- Medium
- Main fault
Source: [GEM](#)
- Administrative division
- Main roads
- Populated area
Source: [HOTOSM](#)
- Country border

