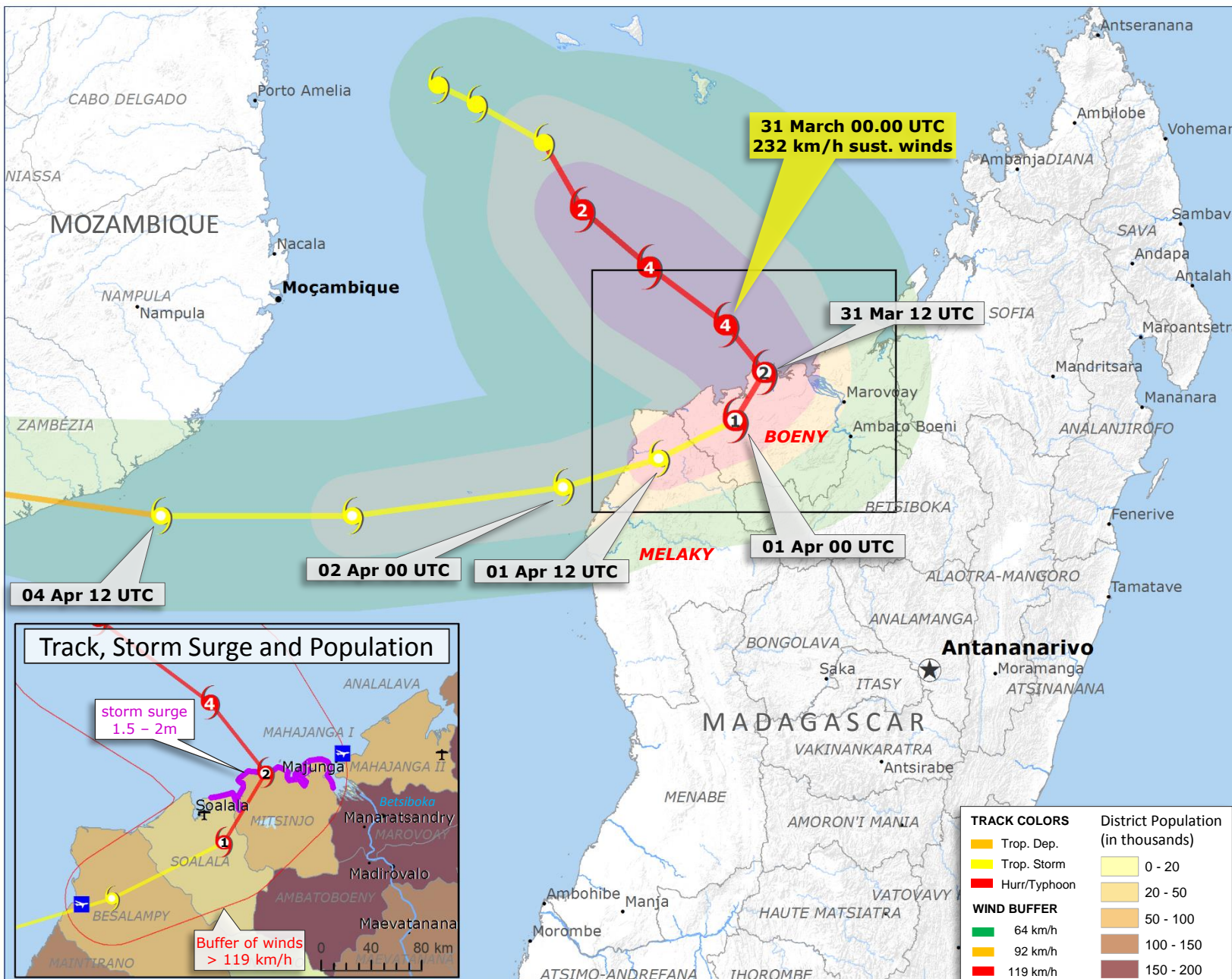


31 March 2014: Madagascar – Tropical Cyclone HELLEN



SITUATION

- Tropical Cyclone HELLEN made landfall in Boeny region of NW Madagascar at around 12.00 UTC, approx. 20km east of the town of Soalala (pop. 15 000), according to [Meteo France - La Reunion](#).
- Earlier, at 00.00 UTC, HELLEN had attained a max. sust. wind speed of 232 km/h, equivalent to Category 4 in the Saffir-Simpson scale. Its forecast wind speed for around the time of landfall was 175 km/h. ([GDACS](#))
- Having made landfall, the centre of HELLEN is expected to traverse the districts of Mitsinjo, Soalala and Besalampy, weakening, over 31 March and 1 April. JRC estimates up to 250 000 people potentially exposed to winds above 120 km/h. HELLEN should then move over sea, in the direction of Mozambique.
- Very strong winds, heavy rainfall and storm surge could affect NW Madagascar, especially the regions of Boeny and Melaky, that have been put on Red Alert for Imminent Danger by [BNGRC](#). 124 mm of rain in 24h have been measured in Majunga as of 06.00 UTC on 31 March.
- JRC estimates (using 31 March 00.00 UTC data) a possible [storm surge](#) of the order of 1 to 2m in the area of Majunga (thick purple line in the inset map).