

Cuba and Jamaica | Hurricane RAFAEL



Impact overview
as of 7 November
Source: [AP News](#)

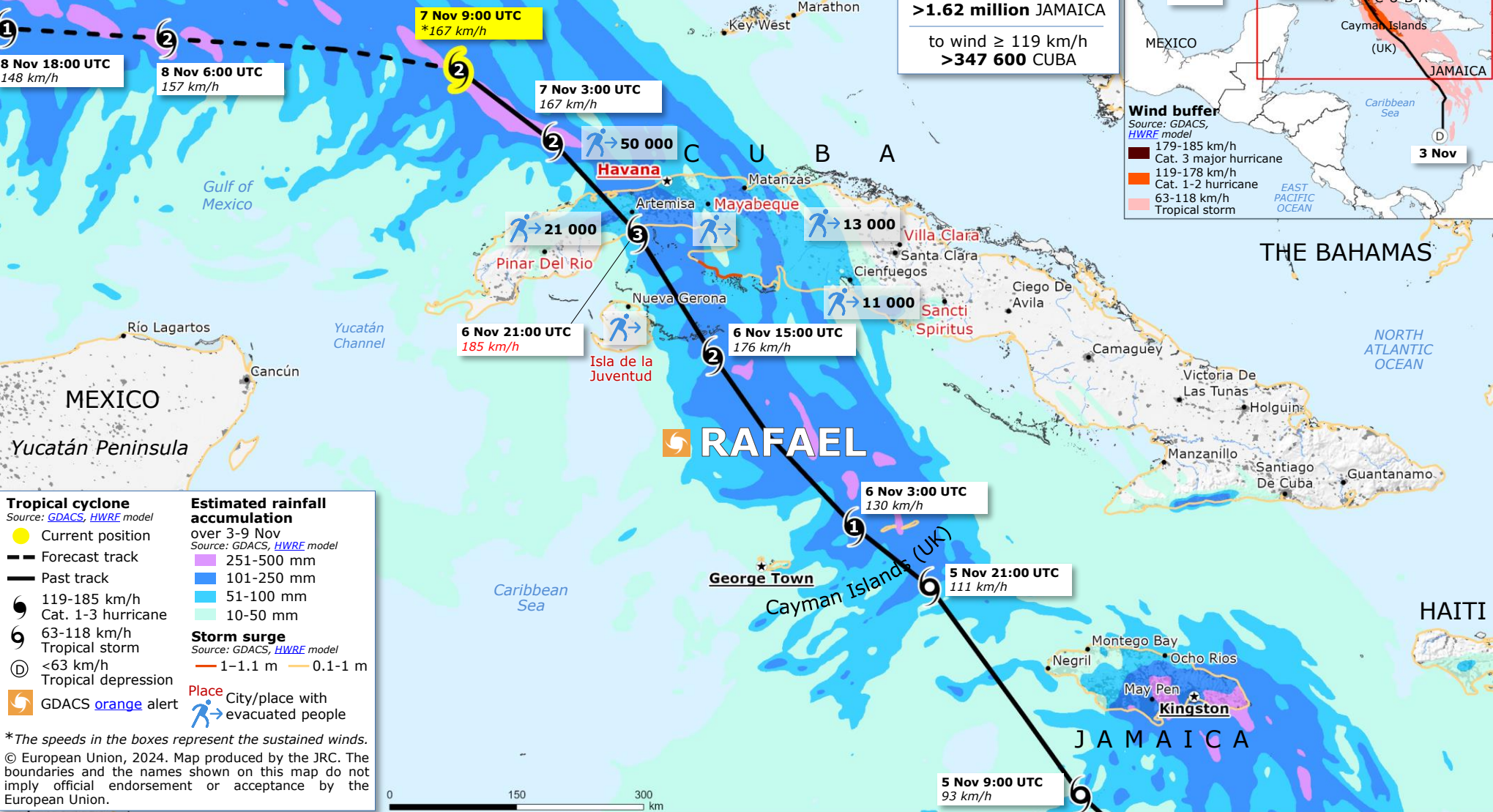
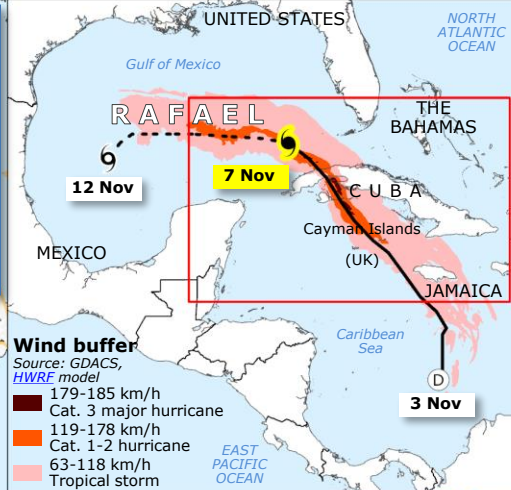
CUBA
> **95 000**
Evacuated people

Potential exposed population
Source: [GDACS](#), [HWRF](#) model

to rainfall 251-500 mm
> **345 700** JAMAICA

to rainfall 100-250 mm
> **1.06 million** CUBA
> **1.62 million** JAMAICA

to wind ≥ 119 km/h
> **347 600** CUBA



Tropical cyclone
Source: [GDACS](#), [HWRF](#) model

- Current position
- Forecast track
- Past track
- ⊙ 119-185 km/h Cat. 1-3 hurricane
- ⊖ 63-118 km/h Tropical storm
- ⊙ <63 km/h Tropical depression
- ⊙ GDACS orange alert

Estimated rainfall accumulation
over 3-9 Nov
Source: [GDACS](#), [HWRF](#) model

- 251-500 mm
- 101-250 mm
- 51-100 mm
- 10-50 mm

Storm surge
Source: [GDACS](#), [HWRF](#) model

- 1-1.1 m
- 0.1-1 m

Place
City/place with evacuated people

*The speeds in the boxes represent the sustained winds.

© European Union, 2024. Map produced by the JRC. The boundaries and the names shown on this map do not imply official endorsement or acceptance by the European Union.

