

The Philippines | Tropical cyclone YINXING

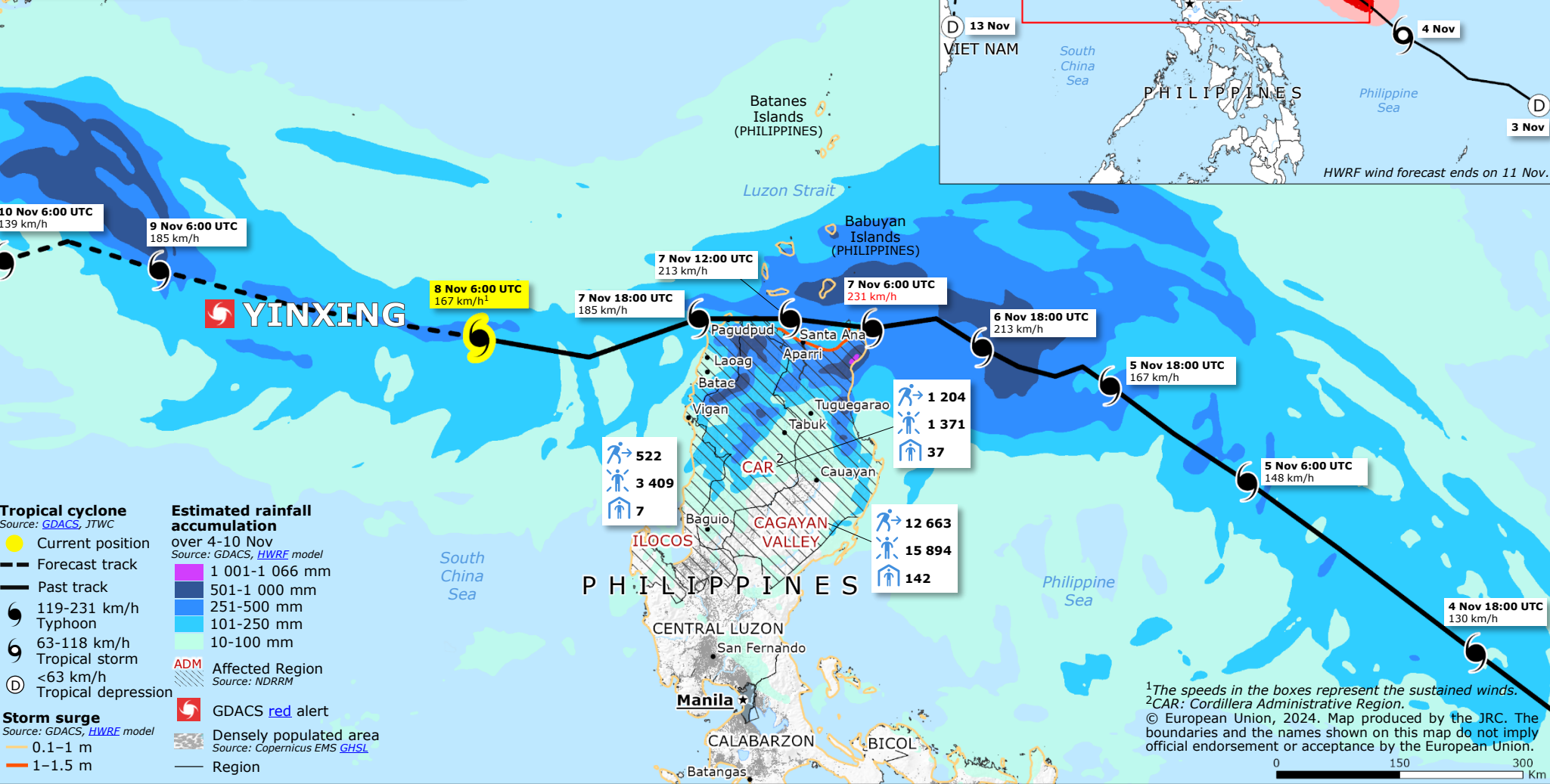
Impact overview
as of 8 November
Source: [NDRRMC](#)

- 20 674** Affected people
- of which **14 389*** Displaced people
- 186** Evacuation centres

*11 476 in 186 evacuation centres

Potential exposed population over 4-10 Nov
Source: [GDACS](#)

- to **rainfall** 500 – 1 066 mm > **40 000**
- to **rainfall** 251 – 500 mm **643 600**
- to **wind** ≥ 119 km/h ~ **601 000**



¹The speeds in the boxes represent the sustained winds.
²CAR: Cordillera Administrative Region.
© European Union, 2024. Map produced by the JRC. The boundaries and the names shown on this map do not imply official endorsement or acceptance by the European Union.