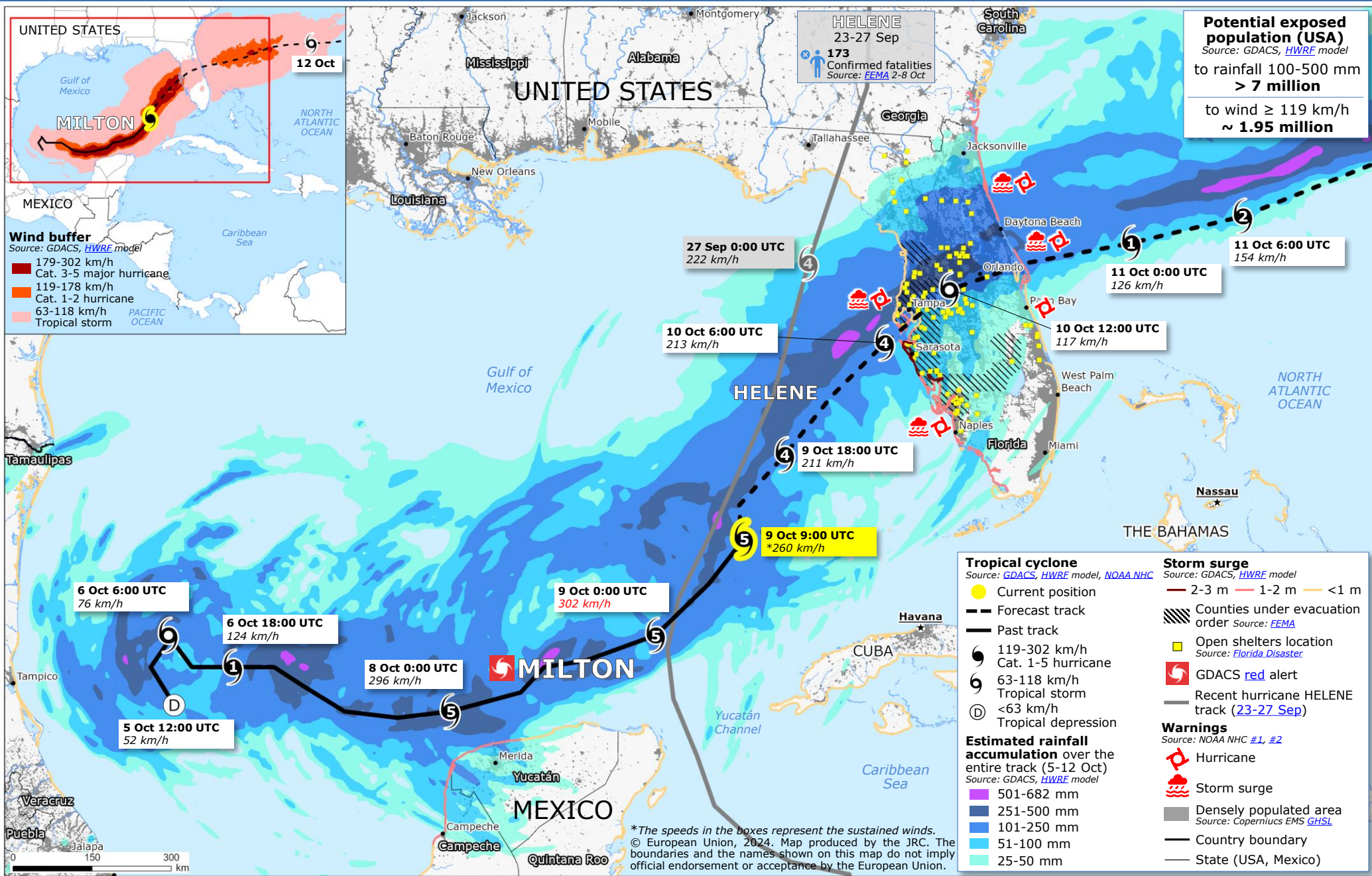


United States and Mexico | Hurricane MILTON



Potential exposed population (USA)
 Source: GDACS, HWRF model
 to rainfall 100-500 mm
 > 7 million
 to wind ≥ 119 km/h
 ~ 1.95 million

HELENE
 23-27 Sep
 173
 Confirmed fatalities
 Source: FEMA 2-8 Oct

UNITED STATES

MILTON

12 Oct

6

Gulf of Mexico

NORTH ATLANTIC OCEAN

MEXICO

Caribbean Sea

Wind buffer
 Source: GDACS, HWRF model

- 179-302 km/h
Cat. 3-5 major hurricane
- 119-178 km/h
Cat. 1-2 hurricane
- 63-118 km/h
Tropical storm

PACIFIC OCEAN

27 Sep 0:00 UTC
222 km/h

11 Oct 6:00 UTC
154 km/h

11 Oct 0:00 UTC
126 km/h

10 Oct 12:00 UTC
117 km/h

10 Oct 6:00 UTC
213 km/h

9 Oct 18:00 UTC
211 km/h

9 Oct 9:00 UTC
*260 km/h

9 Oct 0:00 UTC
302 km/h

8 Oct 0:00 UTC
296 km/h

6 Oct 18:00 UTC
124 km/h

6 Oct 6:00 UTC
76 km/h

5 Oct 12:00 UTC
52 km/h

Tropical cyclone
 Source: GDACS, HWRF model, NOAA NHC

- Current position
- Forecast track
- Past track
- ⊖ 119-302 km/h
Cat. 1-5 hurricane
- ⊖ 63-118 km/h
Tropical storm
- ⊖ <63 km/h
Tropical depression

Storm surge
 Source: GDACS, HWRF model

- 2-3 m
- 1-2 m
- <1 m
- ▨ Counties under evacuation
order Source: FEMA
- Open shelters location
Source: Florida Disaster
- ⚠ GDACS red alert
- Recent hurricane HELENE track (23-27 Sep)

Warnings
 Source: NOAA NHC #1, #2

- ⚠ Hurricane
- ⚠ Storm surge
- Densely populated area
Source: Copernicus EMS GHSL
- Country boundary
- State (USA, Mexico)

Estimated rainfall accumulation over the entire track (5-12 Oct)
 Source: GDACS, HWRF model

- 501-682 mm
- 251-500 mm
- 101-250 mm
- 51-100 mm
- 25-50 mm

*The speeds in the boxes represent the sustained winds.
 © European Union, 2024. Map produced by the JRC. The boundaries and the names shown on this map do not imply official endorsement or acceptance by the European Union.