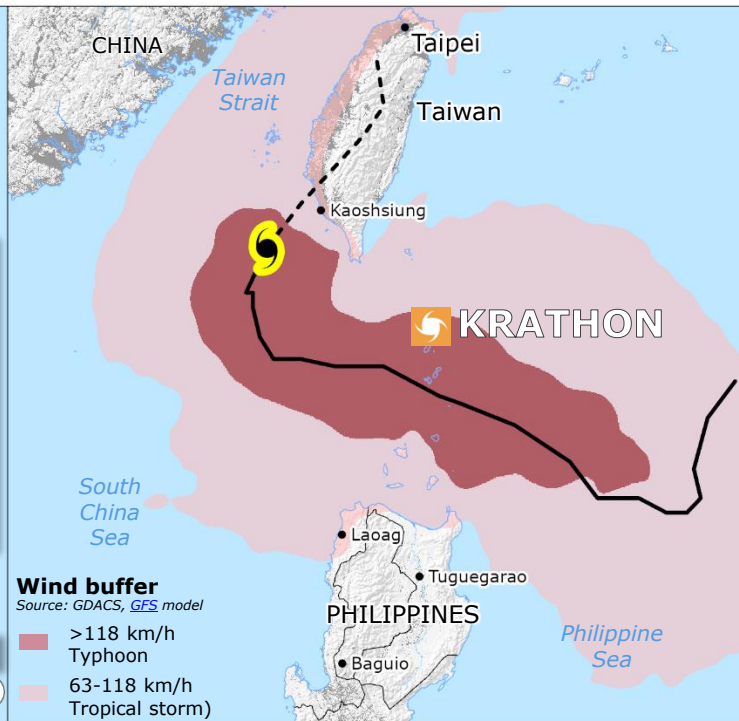
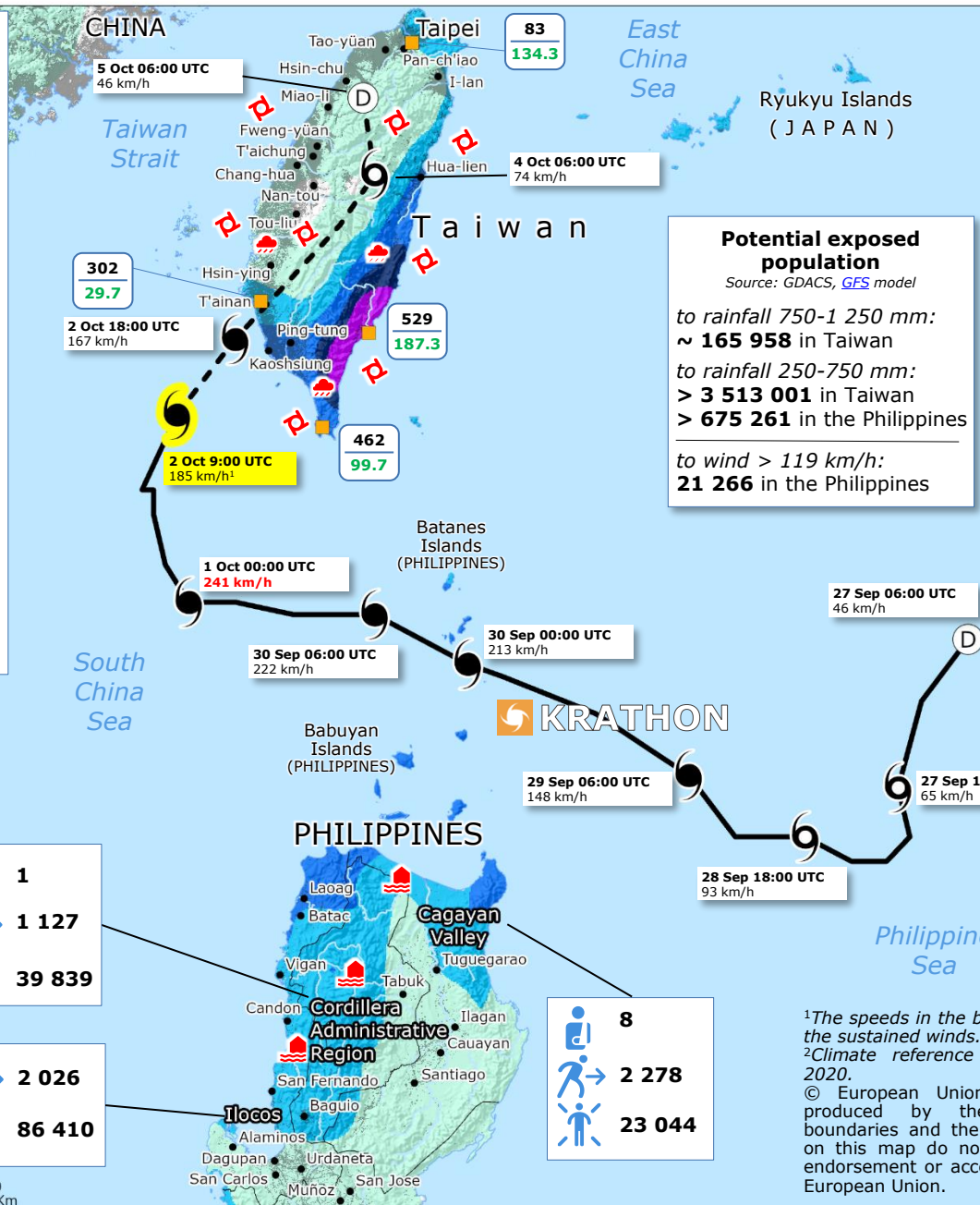


Philippines, Taiwan | Typhoon KRATHON

IMPACT OVERVIEW

- as of 2 October
- ### PHILIPPINES
- Source: [NDRRMC](#)
- 1** Missing person
 - 8** Injured people
 - 5 431*** Displaced people
 - 149 293** Affected people
- *2 176 in evacuation centres
- ### TAIWAN
- Source: [Taiwan National Fire Agency](#)
- 1** Fatality
 - 2** Missing people
 - 70** Injured people
 - 1 654** Evacuated people



1

1 127

39 839

2 026

86 410

8

2 278

23 044

Tropical cyclone (TC)

Source: GDACS, JTWC, RSMC-Tokyo

- Current position
- Forecast track
- Past track
- 119-241 km/h Typhoon
- 63-118 km/h Tropical storm
- <63 km/h Tropical depression

Community advisory

Source: CWA #1, #2, PAGASA

- Typhoon warning
- Torrential to extreme-torrential rain warning
- Flood advisory

Estimated precipitation values (mm) at selected stations (27 Sep – 5 Oct)

Source: WMO, GDACS, GFS model

- Estimated rainfall accumulation
- Normal October precipitation²

Estimated rainfall accumulation over the entire track (27 Sep – 5 Oct)

Source: GDACS, GFS model

- 1 001-1 250 mm
- 501-1 000 mm
- 251-500 mm
- 101-250 mm
- 10-100 mm

- GDACS Orange alert
- Densely populated area Source: JRC GHSL
- Country boundary
- Administrative division (county in Taiwan, region in the Philippines)

¹The speeds in the boxes represent the sustained winds.
²Climate reference period 1991-2020.
 © European Union, 2024. Map produced by the JRC. The boundaries and the names shown on this map do not imply official endorsement or acceptance by the European Union.

