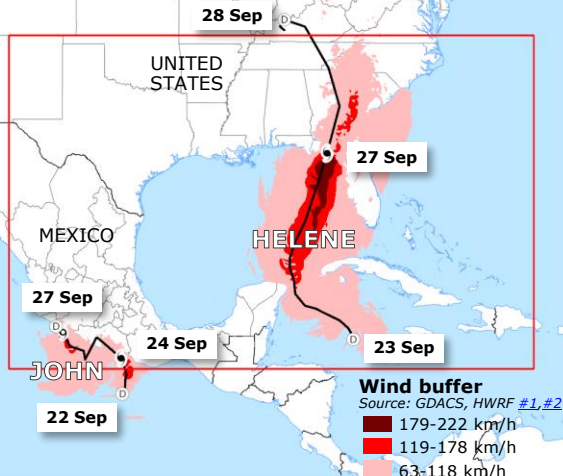
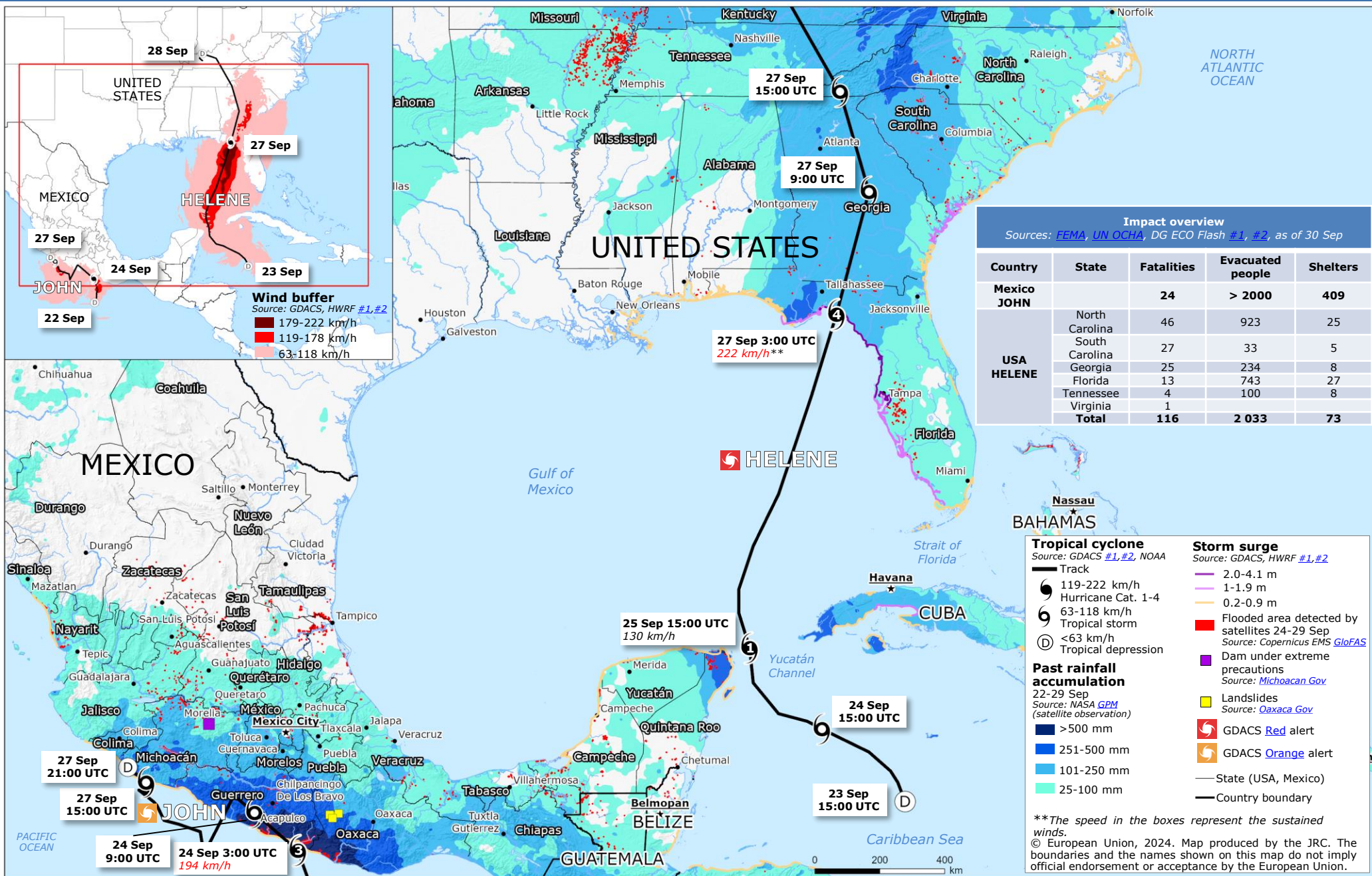


United States and Mexico | Hurricanes HELENE and JOHN



Wind buffer
 Source: GDACS, HWRF #1,#2

- 179-222 km/h
- 119-178 km/h
- 63-118 km/h

Impact overview
 Sources: FEMA, UN OCHA, DG ECHO Flash #1, #2, as of 30 Sep

Country	State	Fatalities	Evacuated people	Shelters
Mexico	JOHN	24	> 2000	409
	HELENE			
USA	North Carolina	46	923	25
	South Carolina	27	33	5
	Georgia	25	234	8
	Florida	13	743	27
	Tennessee	4	100	8
	Virginia	1		
Total		116	2 033	73

Tropical cyclone
 Source: GDACS #1,#2, NOAA

- Track
- 119-222 km/h Hurricane Cat. 1-4
- 63-118 km/h Tropical storm
- <63 km/h Tropical depression

Storm surge
 Source: GDACS, HWRF #1,#2

- 2.0-4.1 m
- 1-1.9 m
- 0.2-0.9 m
- Flooded area detected by satellites 24-29 Sep
- Dam under extreme precautions
- Landslides
- GDACS Red alert
- GDACS Orange alert

Past rainfall accumulation
 22-29 Sep
 Source: NASA GPM (satellite observation)

- >500 mm
- 251-500 mm
- 101-250 mm
- 25-100 mm

— State (USA, Mexico)
 — Country boundary

****The speed in the boxes represent the sustained winds.**
 © European Union, 2024. Map produced by the JRC. The boundaries and the names shown on this map do not imply official endorsement or acceptance by the European Union.