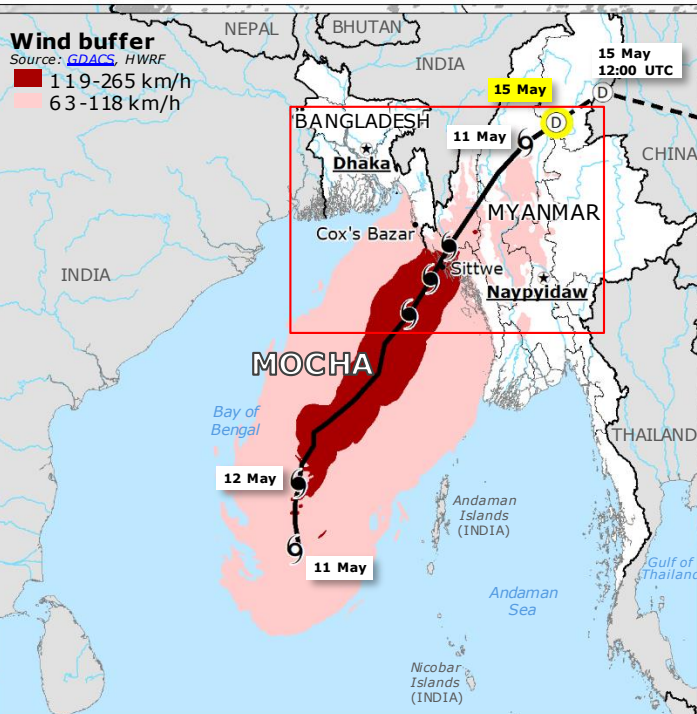


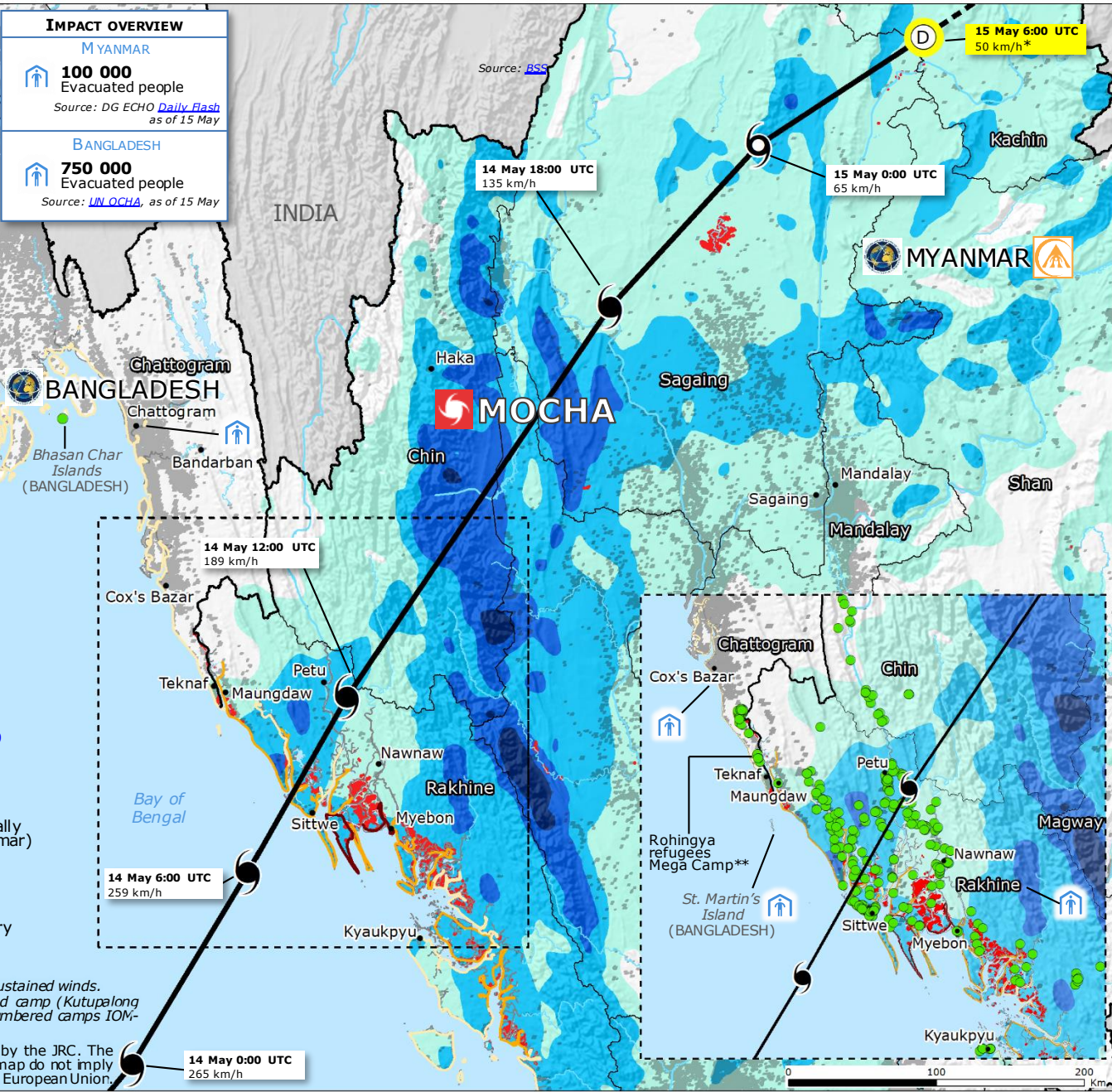
Myanmar, Bangladesh | Tropical Cyclone MOCHA



IMPACT OVERVIEW

MYANMAR
100 000 Evacuated people
Source: DG ECHO Daily Flash as of 15 May

BANGLADESH
750 000 Evacuated people
Source: UN OCHA, as of 15 May



Tropical cyclone
Source: GDACS, HWRF

- Current position
- Forecast track
- Past track
- ⊙ < 63 km/h Tropical depression
- ⊙ 63-118 km/h Tropical storm
- ⊙ 119-265 km/h Tropical cyclone

Rainfall accumulation over the entire track
11-15 May
Source: GDACS, HWRF

- 501-820 mm
- 251-500 mm
- 101-250 mm
- 25-100 mm

Storm surge
Source: GDACS, HWRF

- 0.1-1 m
- 1-2 m
- >2 m
- Flooded area over 12-14 May
Source: NASA MODIS

- 🏠 Shelters
Source: BSS, UN OCHA, DG ECHO Daily Flash as of 15 May
- 🚒 Copernicus EMSR activation Myanmar EMSR661
- 🌐 Charter activation Myanmar 818, Bangladesh 819
Source: UNHCR
- 🚨 GDACS Red alert
- 🟢 Camp for Rohingya refugees (Bangladesh), camp for Internally Displaced Persons-IDPs (Myanmar)
Source: UNHCR
- 🏠 Densely populated area
Source: JRC GHSL
- Administrative division boundary
- Country boundary

*The speeds in the boxes represent the sustained winds.
**The Mega Camp includes the registered camp (Kutupalong RC) and expansion sites, subdivided in numbered camps IOM-managed.