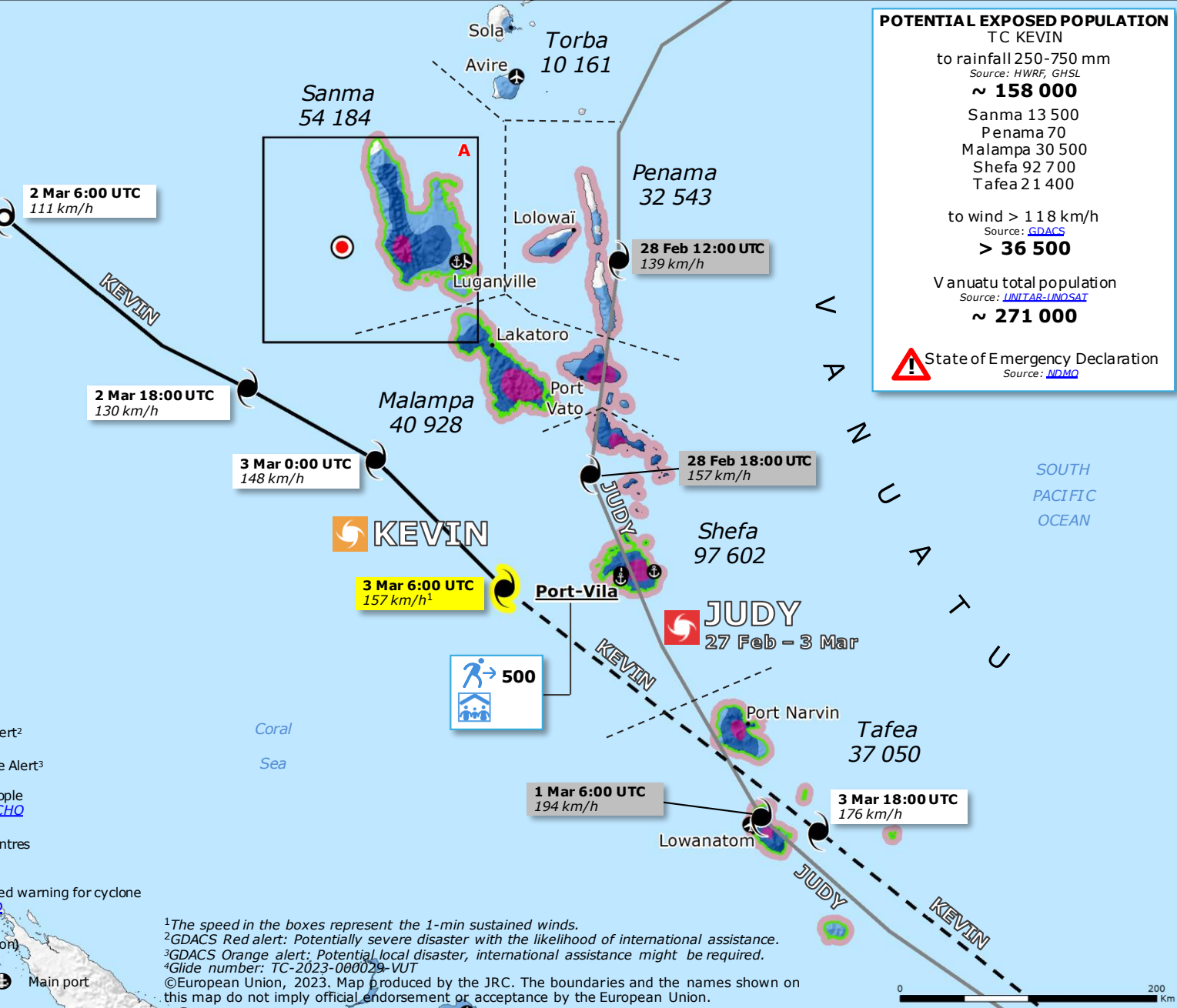
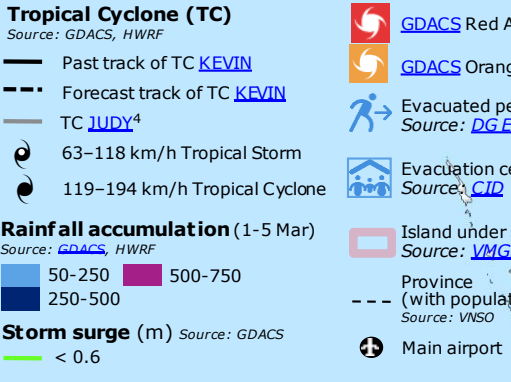
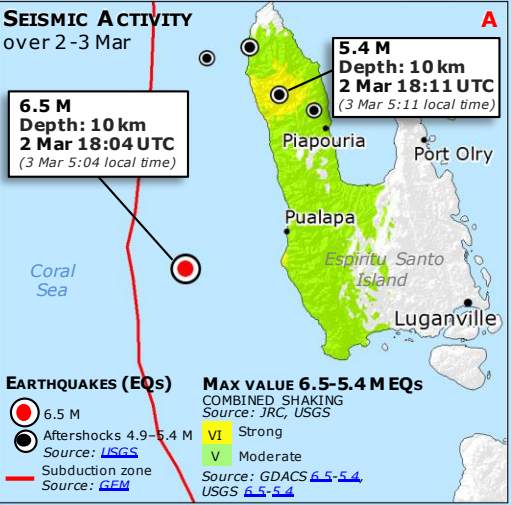
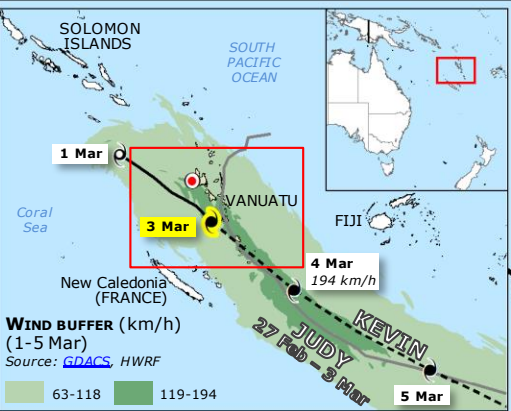


Vanuatu | Tropical Cyclones and recent seismic activity



¹The speed in the boxes represent the 1-min sustained winds.
²GDACS Red alert: Potentially severe disaster with the likelihood of international assistance.
³GDACS Orange alert: Potential local disaster, international assistance might be required.
⁴Glide number: TC-2023-000029-VUT
 ©European Union, 2023. Map produced by the JRC. The boundaries and the names shown on this map do not imply official endorsement or acceptance by the European Union.