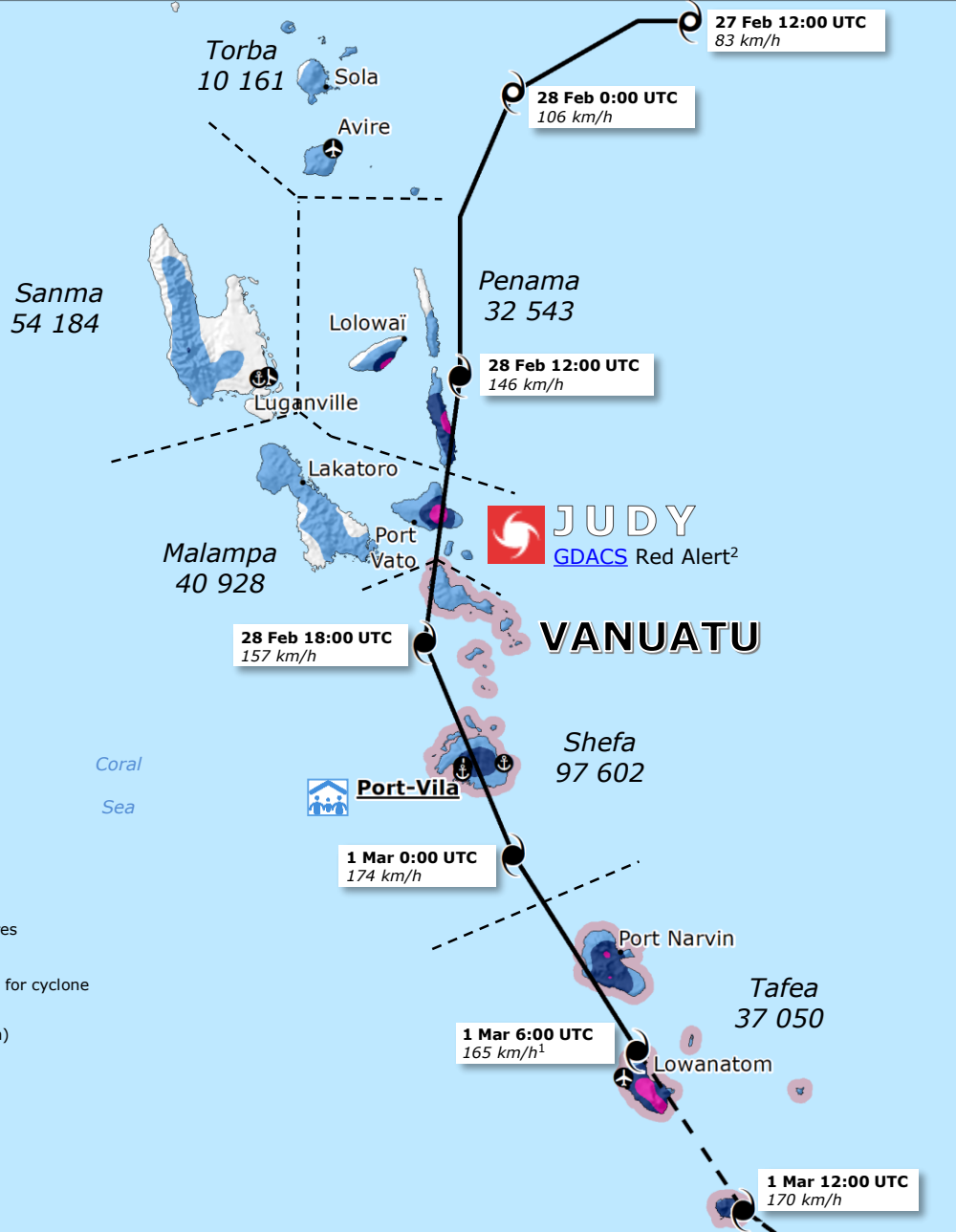
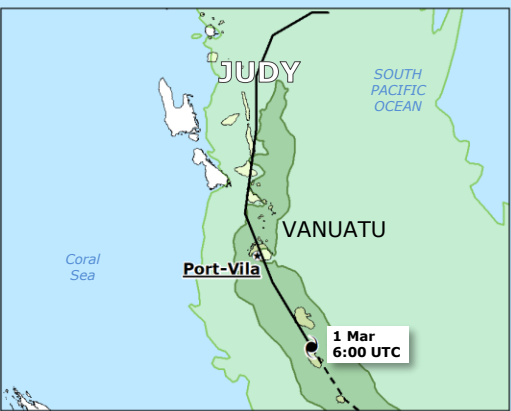
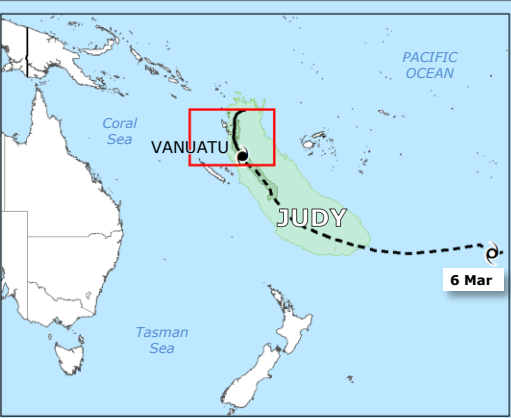


Vanuatu | Tropical Cyclone JUDY



POTENTIAL EXPOSED POPULATION
(27 Feb - 4 Mar)
Source: GDACS

to rainfall 250-750 mm
> 79 000

to wind > 118 km/h
> 57 000

Vanuatu total population
Source: UNITAR-UNOSAT
~ 271 000

Tropical Cyclone (TC)
Source: GDACS, HWRF, VMGD

- Past track
- - - Forecast track
- ⊙ < 63 km/h Tropical Depression
- ⊙ 63-118 km/h Tropical Storm
- ⊙ 119-199 km/h Tropical Cyclone

Wind buffer (km/h)
(27 Feb - 4 Mar)
Source: GDACS, HWRF

- 63-118
- 119-253

Rainfall accumulation over the entire track (27 Feb - 4 Mar)
Source: GDACS, HWRF

- 50-250
- 250-500
- 500-750

Planned evacuation centres
Source: CID

Island under red warning for cyclone
Source: VMGD

Province (with population)
Source: VNSO

Main port

Main airport

¹The speed in the boxes represent the 1-min sustained winds.
²GDACS Red alert: Potentially severe disaster with the likelihood of international assistance.

©European Union, 2023. Map produced by the JRC. The boundaries and the names shown on this map do not imply official endorsement or acceptance by the European Union.

