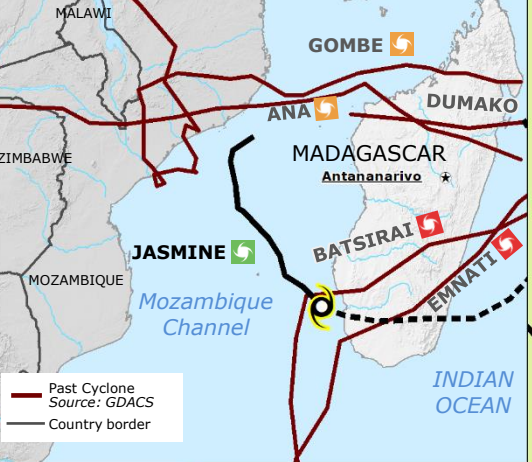


Madagascar | Tropical Cyclone JASMINE

FATALITIES IN MADAGASCAR DUE TO THE RECENT TROPICAL CYCLONE ACTIVITY

ANA (22-25 Jan)	58
BATSIRAI (27 Jan-9 Feb)	121
DUMAKO (13-16 Feb)	14
EMNATI (16-24 Feb)	15
GOMBE (07-12 Mar)	1

Sources: UN OCHA ([ANA](#)), BNGRC ([BATSIRAI](#)), BNGRC ([DUMAKO](#)), BNGRC ([EMNATI](#)), WFP ([GOMBE](#))



Tropical Cyclone

Source: [GDACS](#), [HWRF](#)

- Current position
- Past track
- Forecast track
- < 63 km/h
Tropical Depression
- 63–118 km/h
Tropical Storm (TS)

Wind buffer (km/h)

over 26-27 Apr
Source: [GDACS](#), [HWRF](#)

- 63-118
- GDACS Orange Alert

Storm surge (m)

over 26-27 Apr
Source: [GDACS](#), [HWRF](#)

- 0.2-0.5

Rainfall (mm)

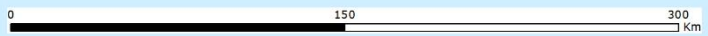
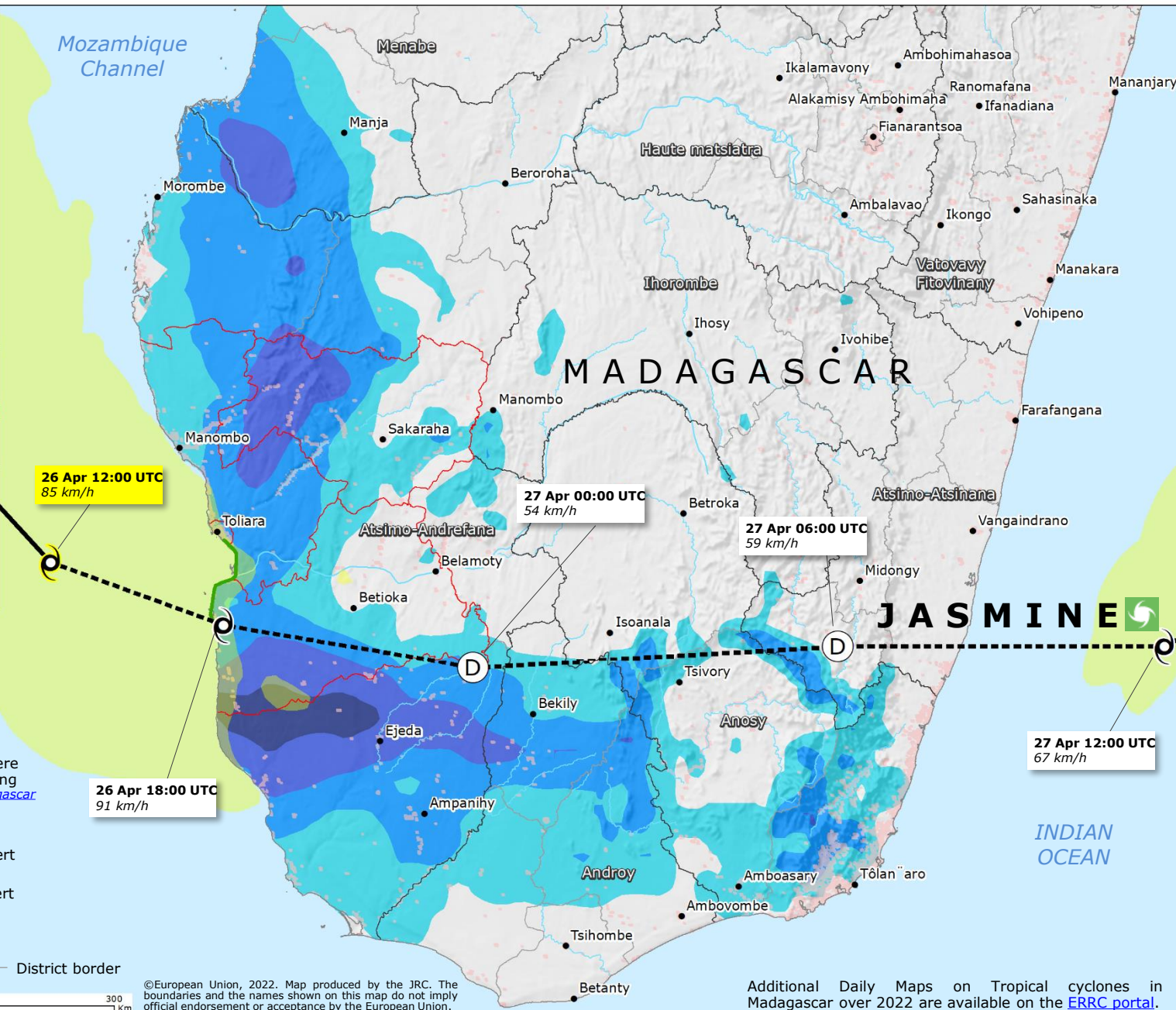
Over 24-29 Apr
Source: [GDACS](#), [HWRF](#)

- 25-50
- 50-100
- 100-200
- 200-300

- District under severe weather red warning
Source: [Meteo Madagascar](#)
- GDACS Red Alert
- GDACS Orange Alert
- GDACS Orange Alert

- Built-up area

- Region border
- District border



©European Union, 2022. Map produced by the JRC. The boundaries and the names shown on this map do not imply official endorsement or acceptance by the European Union.