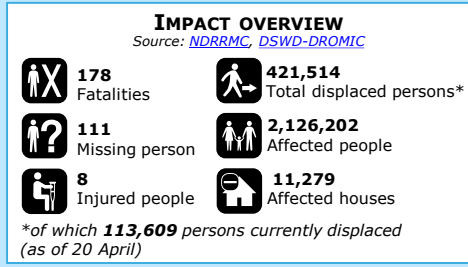
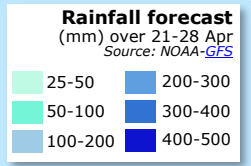
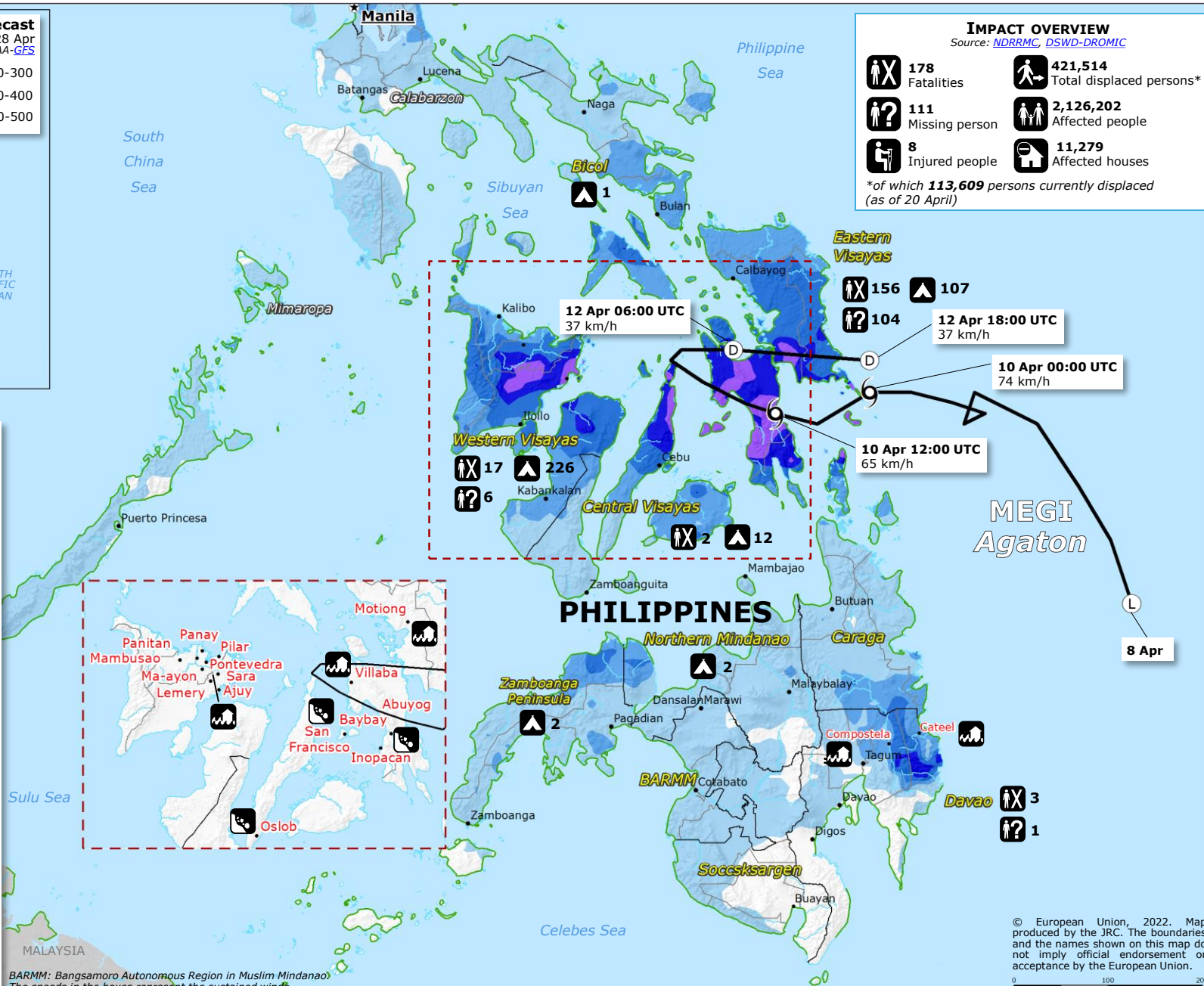


Philippines | Tropical storm MEGI (Agaton) impact overview



- ### Tropical cyclone
- Source: [GDACS](#)
- Past track
 - (L) Low pressure system
 - (D) <63 km/h
 - 6 63-74 km/h
- ### Rainfall accumulation (mm) over 3-13 Apr
- Source: [NASA-GPM](#)
- | | |
|---------|---------|
| 100-200 | 400-500 |
| 200-300 | > 500 |
| 300-400 | |
- ### Storm surge (m) over 9-11 Apr
- Source: [GDACS](#), [HWRF](#)
- 0.1-0.9
- Name** Location with reported fatalities
Source: [NDRRMC](#)
- Reg** Affected Region
Source: [NDRRMC](#)
- Opened evacuation centres per Region
Source: [DSWD-DROMIC](#)
 - Landslide event causing fatalities
Source: [NDRRMC](#)
 - Flood event causing fatalities
Source: [NDRRMC](#)
 - Province boundary
 - Region boundary



BARMM: Bangsamoro Autonomous Region in Muslim Mindanao
The speeds in the boxes represent the sustained winds.