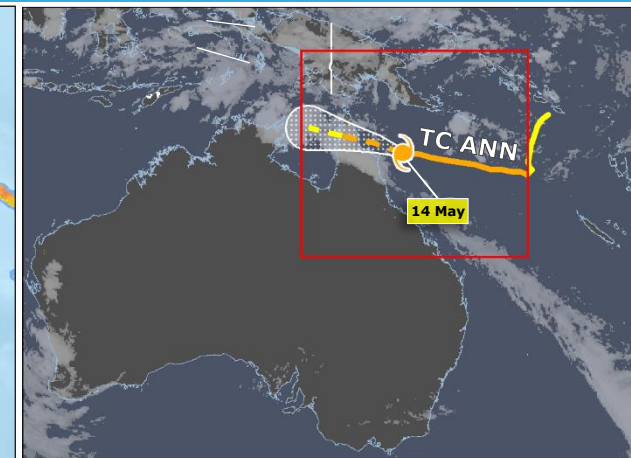
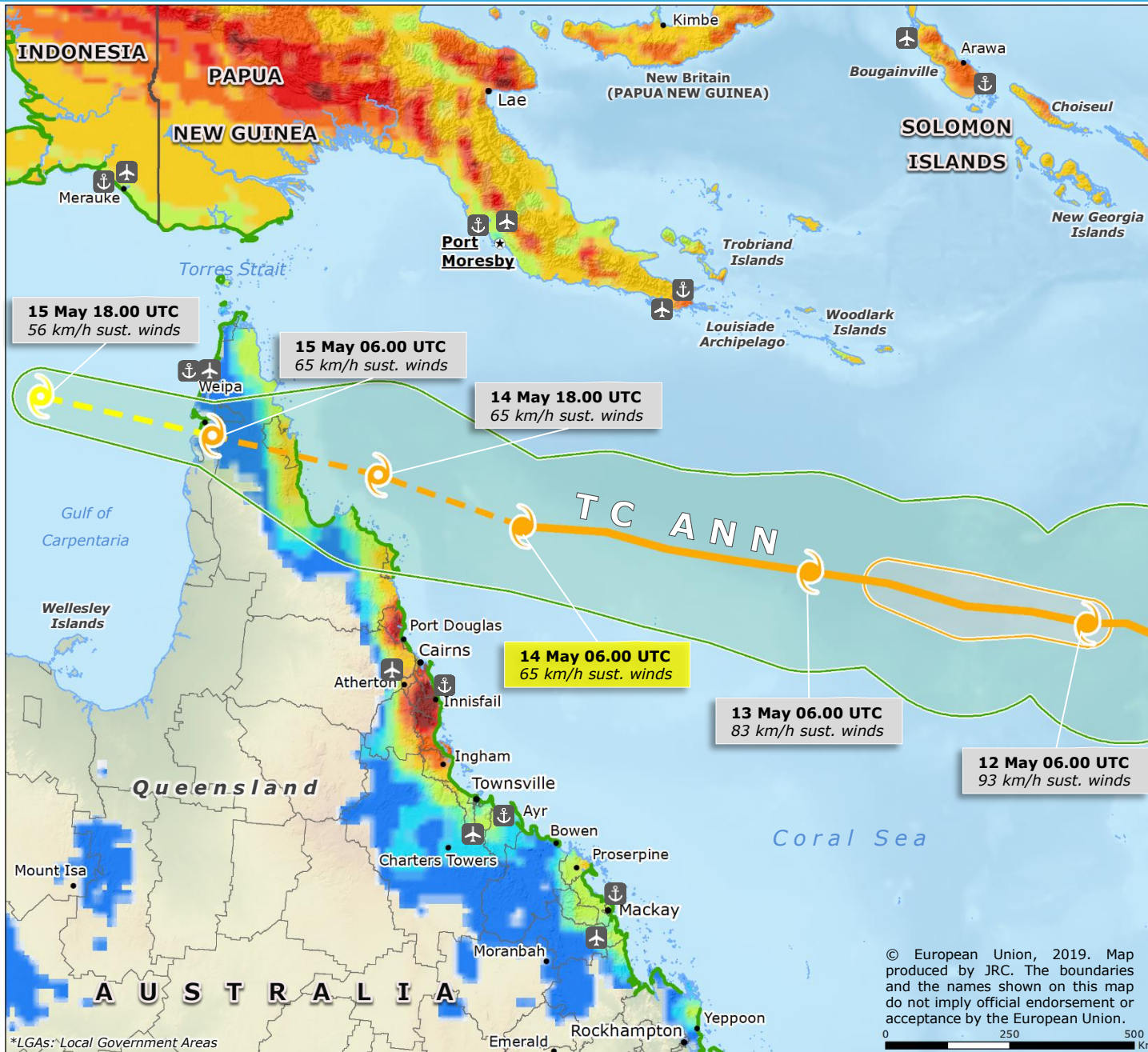


Australia | Tropical Cyclone ANN



TROPICAL CYCLONE (TC)

- Observed position
- Forecast position

INTENSITY

- < 63 Km/h
- 63-118 Km/h
- > 118 Km/h

WIND BUFFER

- 93-118 km/h
- 63-92 km/h

STORM SURGE (Source: JRC, GDACS)

- 0.2 - 0.8 m

PAST 7-DAY RAINFALL ACCUMULATION

Source: NASA-GPM

- > 500 mm
- 250 - 500 mm
- 100 - 250 mm
- 50 - 100 mm
- 25 - 50 mm

10-DAYS RAINFALL FORECAST

Source: JRC GloFAS-ECMWF

- 10-15 mm
- 15-20 mm
- 20-25 mm
- 25-50 mm
- 50-100 mm
- 100-150 mm
- 150-200 mm
- > 200 mm

LEGEND:

- Main Airport
- Main Port
- LGAs* boundary (Queensland, Australia)

© European Union, 2019. Map produced by JRC. The boundaries and the names shown on this map do not imply official endorsement or acceptance by the European Union.

*LGAs: Local Government Areas