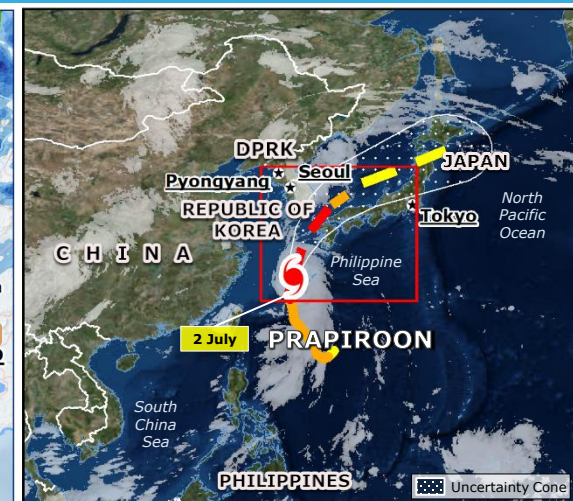
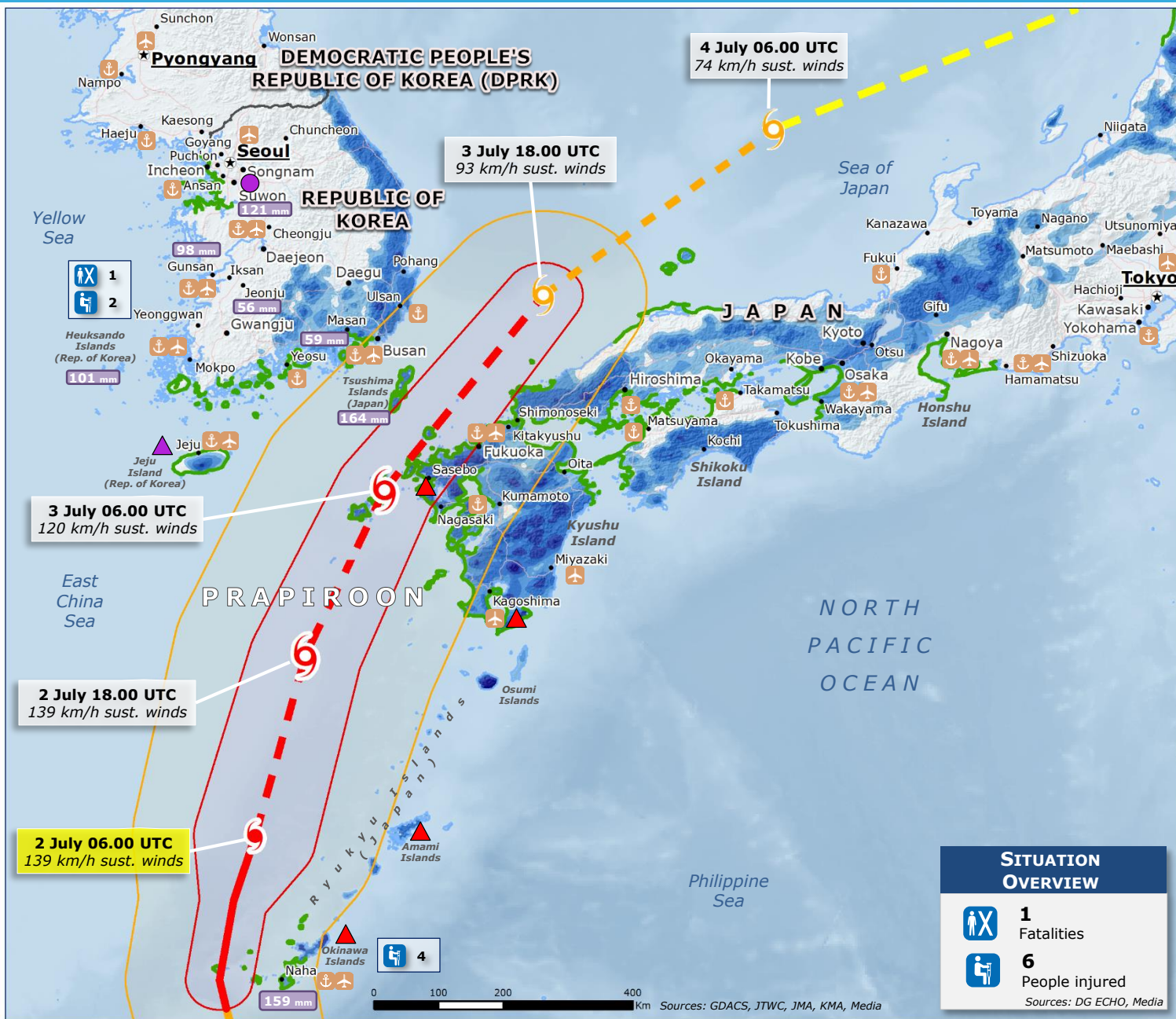
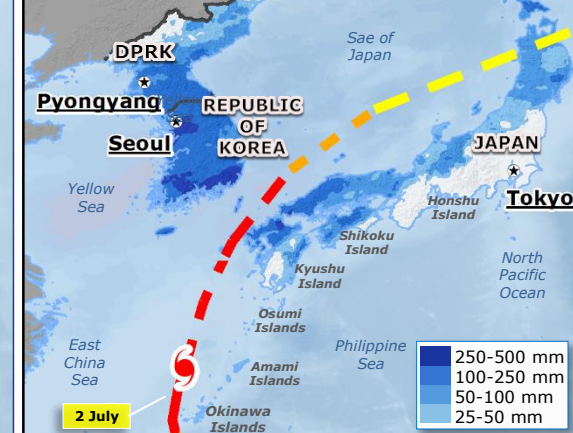


# Japan, Republic of Korea | Tropical Cyclone PRAPIROON



**RAINFALL ACCUMULATION PAST 7-DAYS**  
Source: NASA-GPM



**TROPICAL CYCLONE**

- Observed position
- Forecast position

**INTENSITY**

- < 63 Km/h
- 63-118 Km/h
- > 118 Km/h

**WIND BUFFER**

- 93-118 km/h
- > 118 Km/h

**STORM SURGE**  
JRC Calculations (GDACS)

- <= 1 m

**Past precipitation accum. - mm of rain in 24 h over 1-2 June (Source: WMO)**

**5-DAYS RAINFALL FORECAST** Source: NOAA-HWRF

- > 500 mm
- 250-500 mm
- 100-250 mm
- 50-100 mm
- 25-50 mm

**COMMUNITY ADVISORY**

- Red Warning for storm and high waves (Source: JMA)
- Advisory for heavy rain (Source: JMA)
- Advisory for wind waves (Source: KMA)
- Airport
- Port