

Arabian Sea | Tropical Cyclones SAGAR and MEKUNU

TC SAGAR IMPACT

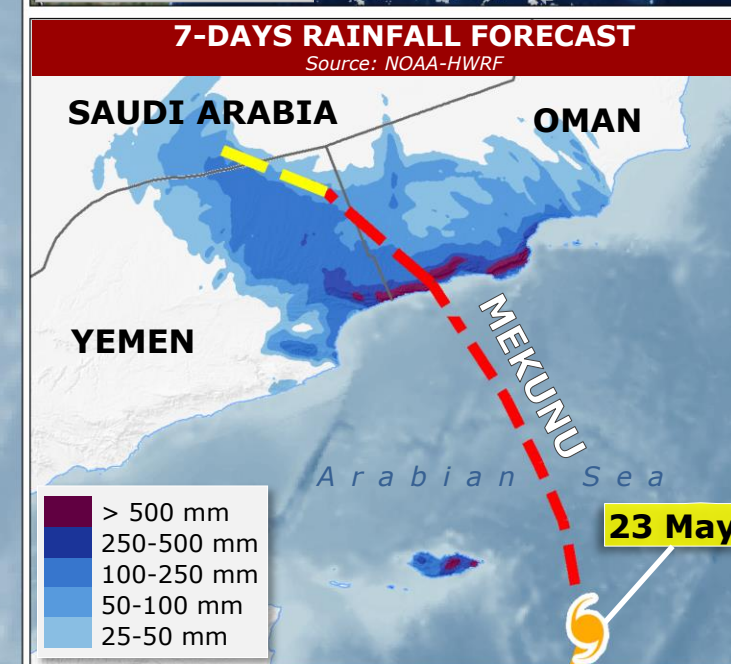
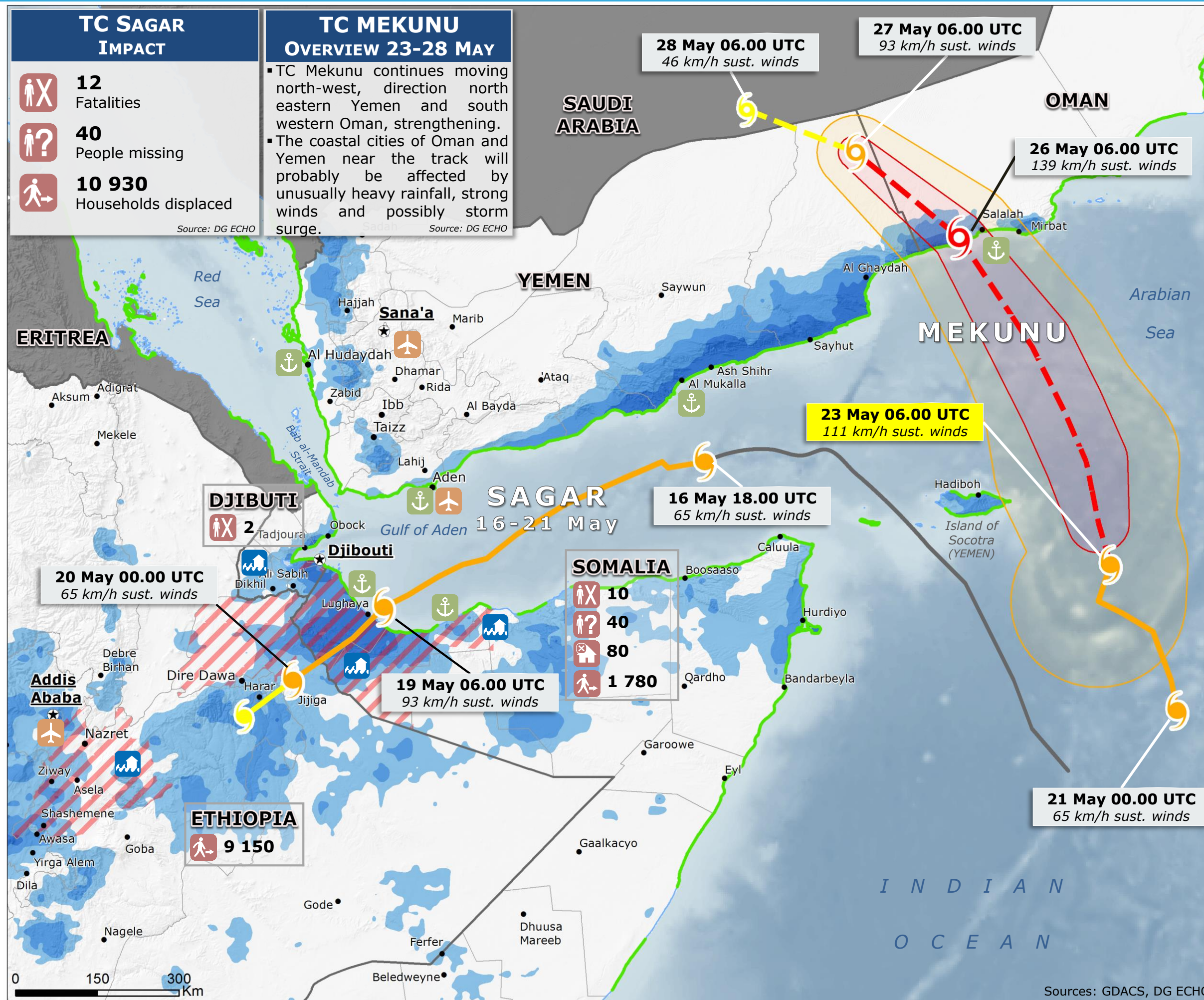
- 12** Fatalities
- 40** People missing
- 10 930** Households displaced

Source: DG ECHO

TC MEKUNU OVERVIEW 23-28 MAY

- TC Mekunu continues moving north-west, direction north eastern Yemen and south western Oman, strengthening.
- The coastal cities of Oman and Yemen near the track will probably be affected by unusually heavy rainfall, strong winds and possibly storm surge.

Source: DG ECHO



TROPICAL CYCLONE (TC) RAINFALL ACCUMULATION

PAST 7 DAYS

Source: NASA-GPM

- 100-250 mm
- 50-100 mm
- 25-50 mm

INTENSITY

- > 118 km/h
- 63 - 118 km/h
- < 63 km/h

WIND BUFFER

- > 118 km/h
- 93-118 km/h

LOW PRESSURE AREA

Source: JTWC, NOAA

STORM SURGE

Source: JRC

Legend:

- Observed position
- Forecast position
- Affected areas
- Fatalities
- People missing
- Households displaced
- Houses destroyed
- Floods
- Airport
- Port