

SITUATION

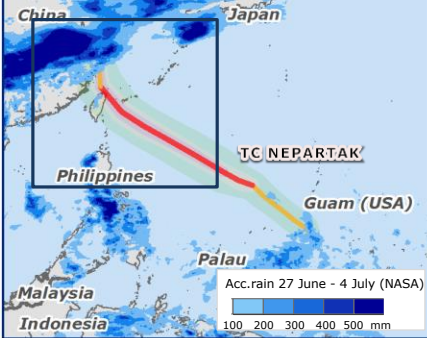
- Tropical Cyclone NEPARTAK formed over the north-western Pacific Ocean near the island of Guam (USA) on 3 July. It then started moving north-west, strengthening and entering the Philippine Area of Responsibility. On 5 July at 6.00 UTC its center was located approx. 1 670 km south-eastern of northern Taiwan and it had max. sustained wind speed of 157 km/h.
- Over the next 48 h it is forecast to continue moving north-west over open waters, strengthening. It may move near or over northern Taiwan over 7-8 July as an intense Tropical Cyclone. Heavy rain and strong winds may affect the areas along its path.

Recent floods and landslides in China

- Severe weather including heavy rain, strong winds and hail, has been recently affecting several parts of China especially the south-eastern parts causing floods and landslides.
- National authorities reported 128 people dead, 42 missing, over 132 000 evacuated and more than 289 000 homes partially or fully damaged in several provinces of the country, as of 5 July.
- Heavy rain and strong winds may affect the south-eastern areas of the country after 8 July due to TC NEPARTAK which is approaching.

Sources: GDACS, JTWC, NRDDMC, PAGASA, CWB Taiwan, CMA, Local Media

ACCUM. RAINFALL OVER THE PAST 7 DAYS, AS OF 4 JULY (NASA)



TROPICAL CYCLONE (max. sustained winds)	WIND BUFFER
> 118 km/h	> 118 km/h
63-118 km/h	92-118 km/h
< 63 km/h	64-92 km/h

Pop. Density (pop/km ²)
501 - 2 500
2 501 - 5 000
5 001 - 130 000

Tropical Cyclone Track uncertainty
 Affected areas by recent floods