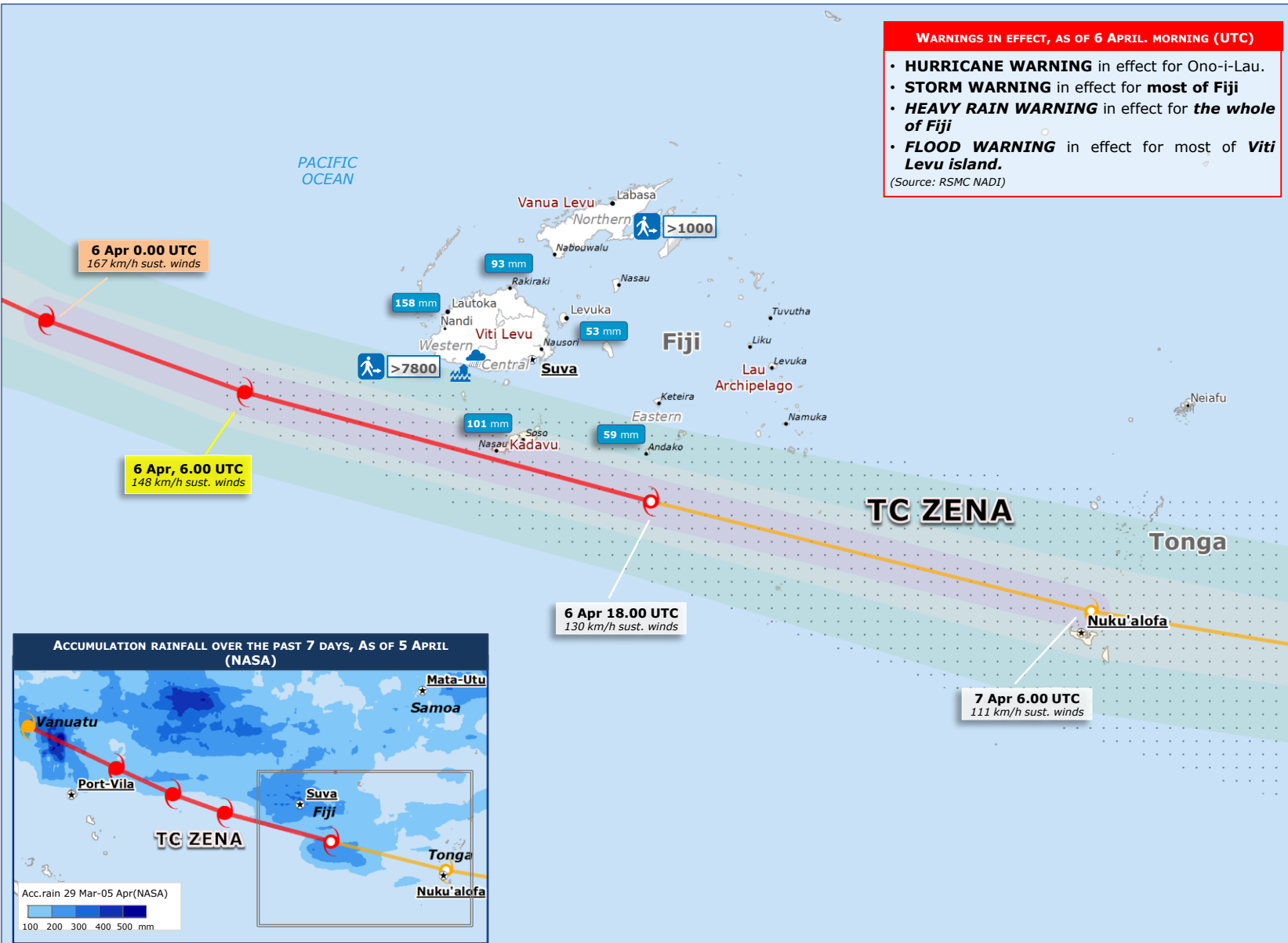




WARNINGS IN EFFECT, AS OF 6 APRIL MORNING (UTC)

- **HURRICANE WARNING** in effect for Ono-i-Lau.
- **STORM WARNING** in effect for **most of Fiji**
- **HEAVY RAIN WARNING** in effect for **the whole of Fiji**
- **FLOOD WARNING** in effect for most of **Viti Levu island.**

(Source: RSMC NADI)



SITUATION

- Less than two months after the devastation caused by cyclone WINSTON, cyclone ZENA formed on 5 April over the south-western Pacific Ocean, near the island of Espiritu Santo (Vanuatu). It then moved over Vanuatu making landfall on the islands of Espiritu Santo, Aoba and Pentecost on 5 April with approx. max. sustained wind speed of 65-85 km/h. On 6 April at 6.00 UTC it had max. sustained wind speed of 148 km/h and its centre was located approx. 240 km south-west of the island of Viti Levu (Fiji).
- Over the next 24 h it is forecasted to move east-southeast towards southern Fiji and Tonga, slightly weakening. Its centre may pass near the island of Kadavu (Fiji) on 6 April with max. sust. winds of 130-150 km/h. Heavy rain and strong winds may affect most of the Fiji islands over the next 24 h. As of 6 April, Hurricane, Storm, Heavy rain and Flood Warnings are in effect for several areas of the country.
- Media reported that over 8 800 people have been evacuated in the Western and Northern Divisions, as of 6 April.

Sources: ECHO, GDACS, JTWC, WMO, Fiji Met. Services, NDMO, Vanuatu Met. Services, Media

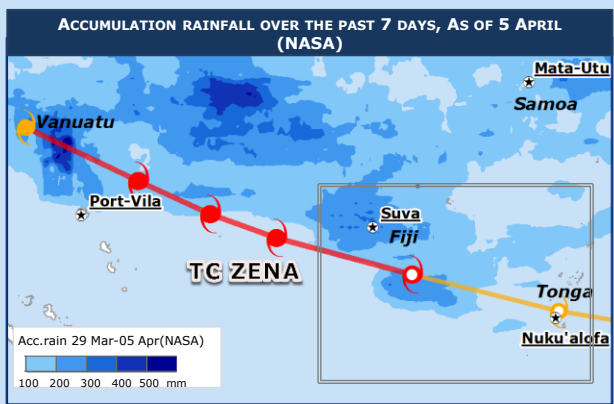
SOUTH PACIFIC TROPICAL CYCLONE SEASON

- From 1 Nov to 30 April

TROPICAL CYCLONE (max. sustained winds)	WIND BUFFER
> 118 km/h	> 118 km/h
63-118 km/h	92-118 km/h
< 63 km/h	64-92 km/h

Tropical Cyclone Track uncertainty
 Floods (media)
 Heavy rain
 Evacuees
 24h acc. rain obs. on 5-6 Apr. (WMO)

Sources: GDACS, JTWC, Media, NDMO



0 40 80 160 Km