

France and Italy | Severe weather

Impact overview in France

as of 18 October,
Sources: DG ECHO [Flash](#)

- 1 Fatality
- 2 Injured people
- > 910 Displaced people
- 2 485 Rescued people

4-day rainfall accumulation

14-17 Oct
Source: [NASA GPM](#) (satellite observation)

- 201 – 360 mm
- 151 – 200 mm
- 101 – 150 mm
- 51 – 100 mm
- 20 – 50 mm

Flooded area, as detected by satellites over 15-18 Oct
Source: [Copernicus EMS EFAS GFM](#)

Landslide events area
Source: [DG ECHO Flash](#)

Adm Most affected administrative division

Densely populated area
Source: [Copernicus EMS GHSL](#)

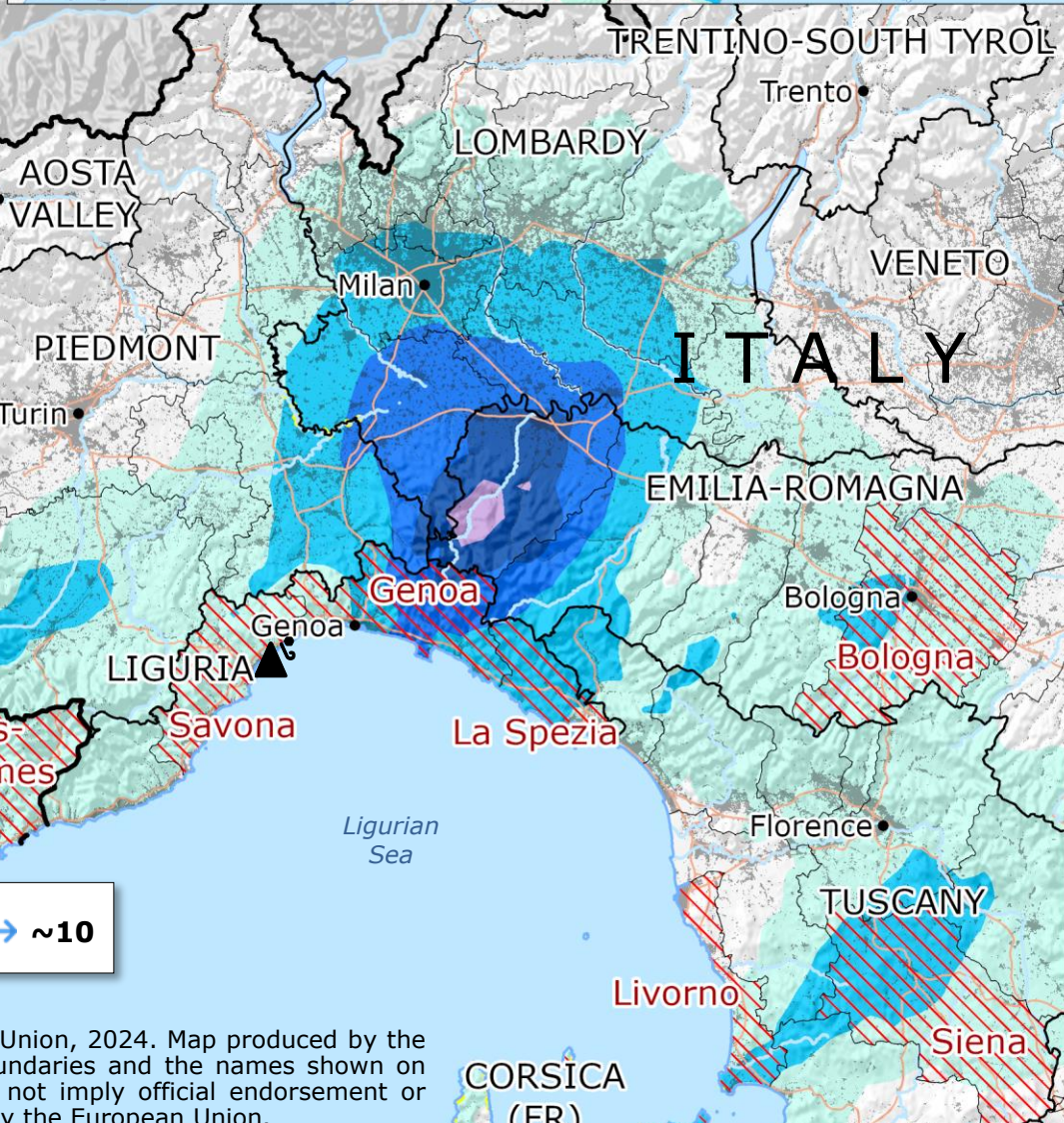
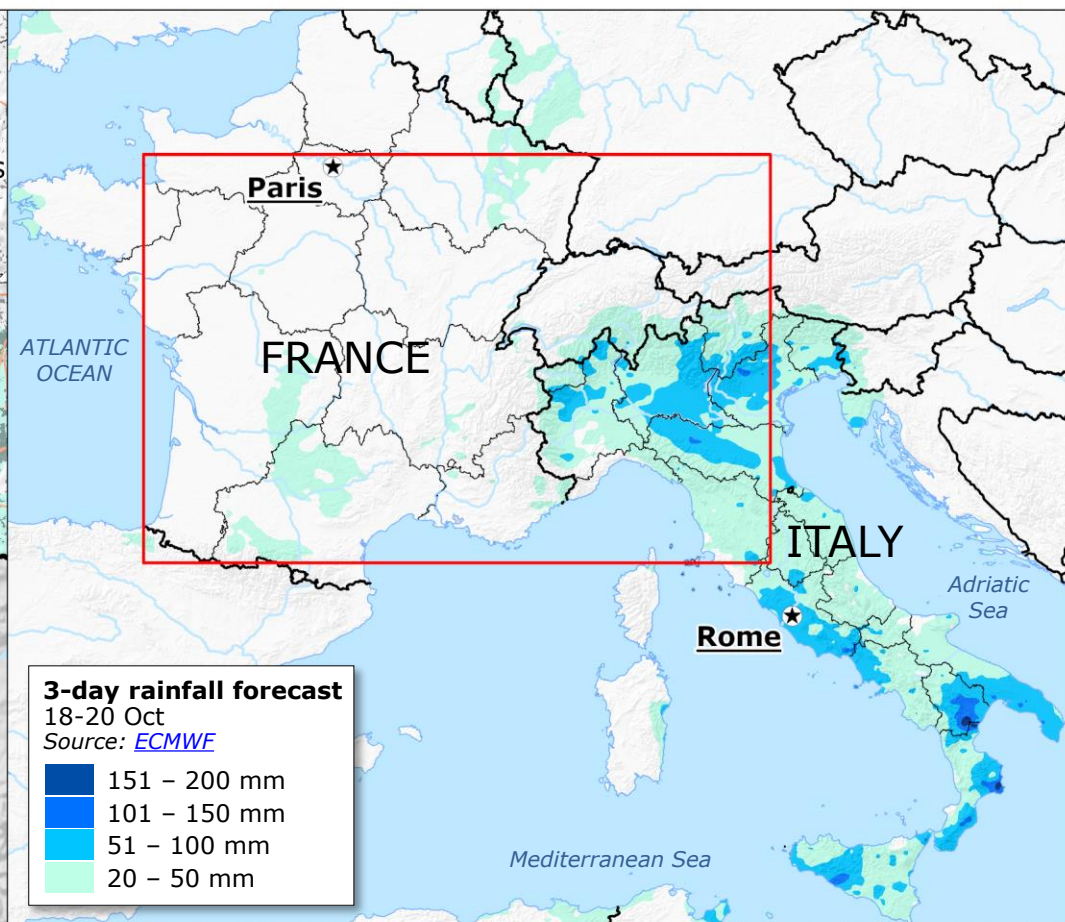
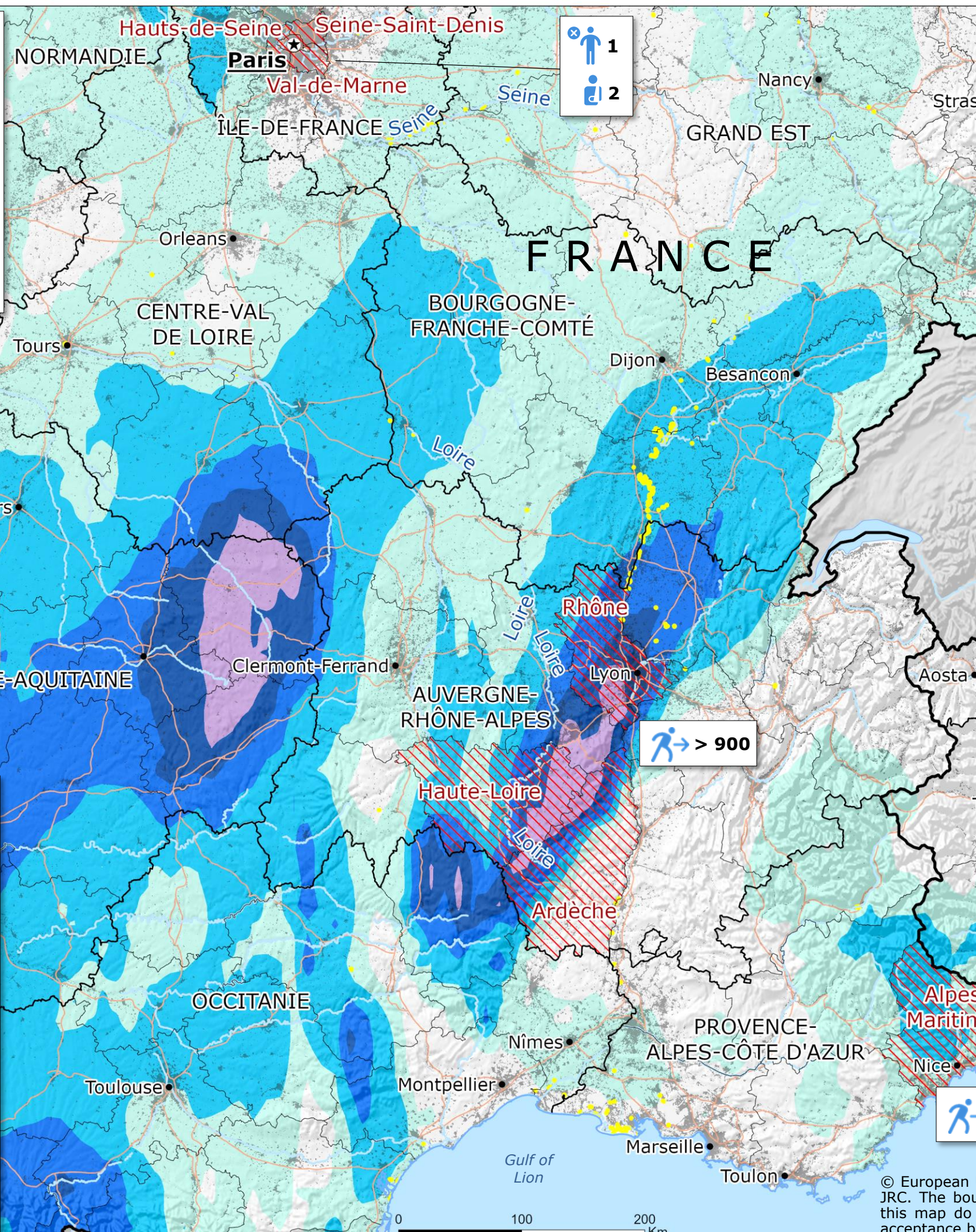
Main roads

Administrative division

Boundary (Department in France, Province in Italy)

Region boundary

Country boundary



© European Union, 2024. Map produced by the JRC. The boundaries and the names shown on this map do not imply official endorsement or acceptance by the European Union.