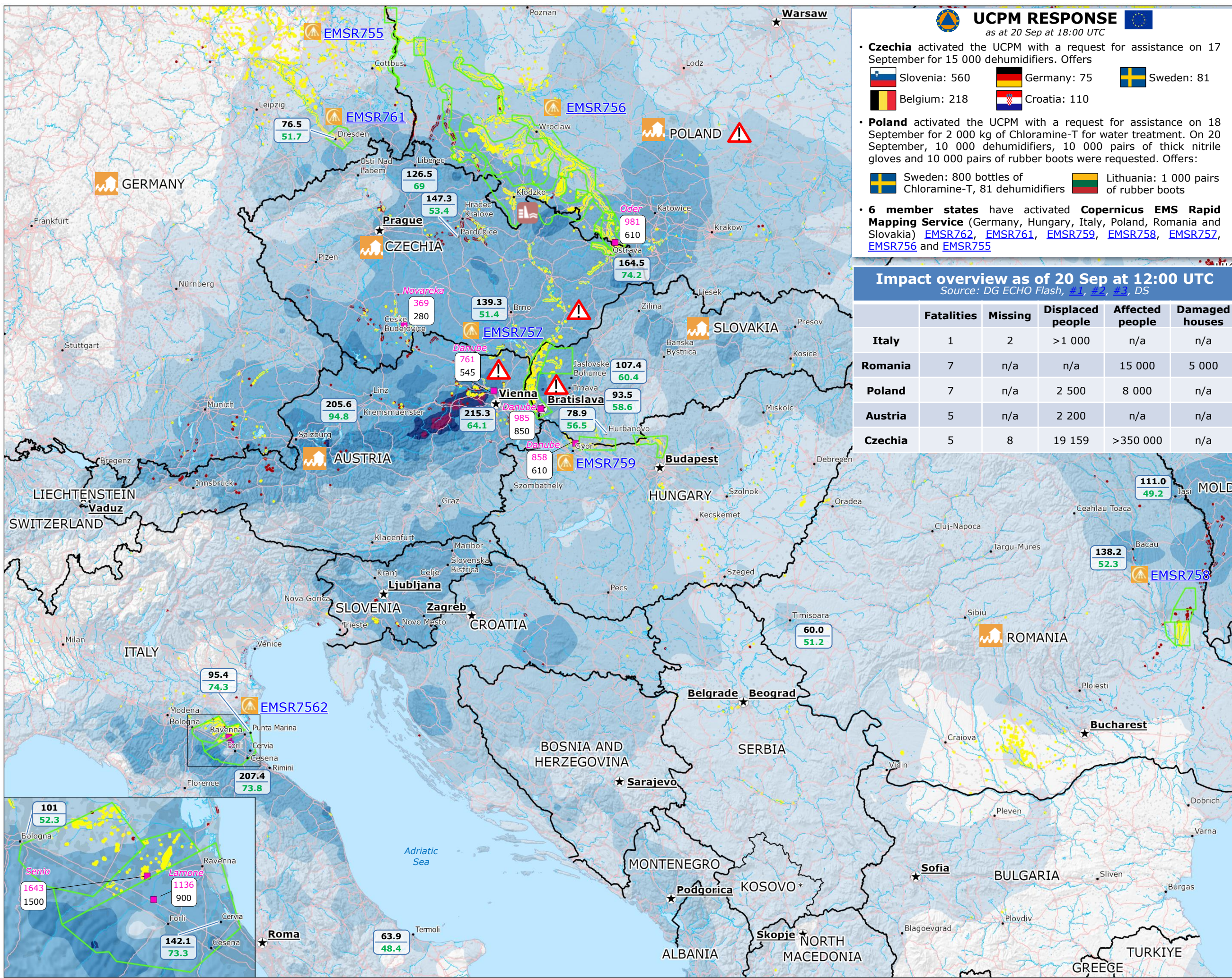


# Central and eastern Europe and Italy | Severe weather and floods



## UCPM RESPONSE

as at 20 Sep at 18:00 UTC

- **Czechia** activated the UCPM with a request for assistance on 17 September for 15 000 dehumidifiers. Offers:
  - Slovenia: 560
  - Germany: 75
  - Sweden: 81
  - Belgium: 218
  - Croatia: 110
- **Poland** activated the UCPM with a request for assistance on 18 September for 2 000 kg of Chloramine-T for water treatment. On 20 September, 10 000 dehumidifiers, 10 000 pairs of thick nitrile gloves and 10 000 pairs of rubber boots were requested. Offers:
  - Sweden: 800 bottles of Chloramine-T, 81 dehumidifiers
  - Lithuania: 1 000 pairs of rubber boots
- **6 member states** have activated **Copernicus EMS Rapid Mapping Service** (Germany, Hungary, Italy, Poland, Romania and Slovakia) [EMSR762](#), [EMSR761](#), [EMSR759](#), [EMSR758](#), [EMSR757](#), [EMSR756](#) and [EMSR755](#)

## Impact overview as of 20 Sep at 12:00 UTC

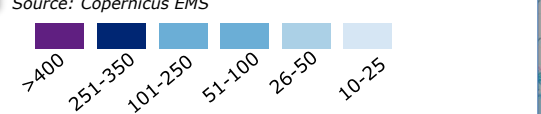
Source: DG ECHO Flash, #1, #2, #3, DS

|                | Fatalities | Missing | Displaced people | Affected people | Damaged houses |
|----------------|------------|---------|------------------|-----------------|----------------|
| <b>Italy</b>   | 1          | 2       | >1 000           | n/a             | n/a            |
| <b>Romania</b> | 7          | n/a     | n/a              | 15 000          | 5 000          |
| <b>Poland</b>  | 7          | n/a     | 2 500            | 8 000           | n/a            |
| <b>Austria</b> | 5          | n/a     | 2 200            | n/a             | n/a            |
| <b>Czechia</b> | 5          | 8       | 19 159           | >350 000        | n/a            |



## Precipitation accumulation (mm) over 11 Sep to 18 Sep

Source: Copernicus EMS



Flooded area, as detected by satellites over 12-19 Sep  
Source: Copernicus EMS EFAS GFM, Copernicus EMSR (755, 756, 757, 758, 759, 761, 762)

FLEXTH topography-based flood extent<sup>1</sup> over 13-19 Sep, Source JRC

Copernicus EMSR activation 13-18 Sep

Area of interest

GDACS orange alert

Disaster/Emergency declaration<sup>2</sup>

Significant water level over 16-19 Sep  
Source: SHMU, IMGW, VH, HPSS, DoRIS, RE

Hydrometric station

Last measured value  
Highest alert level

River under hydrological warning

Dam breach location, Source: KPRM

Precipitation values (mm) at selected cities  
Source: WWIS-WMO, ECMWF

Measured precipitation  
Normal September precipitation<sup>3</sup>

Built-up area  
Source: Copernicus EMS GHSL

Main roads

River

Country boundary

<sup>1</sup>Topography-based enhancement of the flood extent derived with FLEXTH (Betterle and Salamon, 2024). The flood extent is provided by the composite of GFM and Copernicus EMSR activations.  
<sup>2</sup>State of emergency in Bratislava City and Bratislava county; state of emergency in Moravia region (Czechia); disaster zone in Lower Austria (Austria); state of natural disaster in Poland.  
<sup>3</sup>Climatological period are: 1981-2010 for Czechia, Romania and Poland; 1971-2000 for Austria; 1991-2020 for Slovakia, Germany and Italy.

