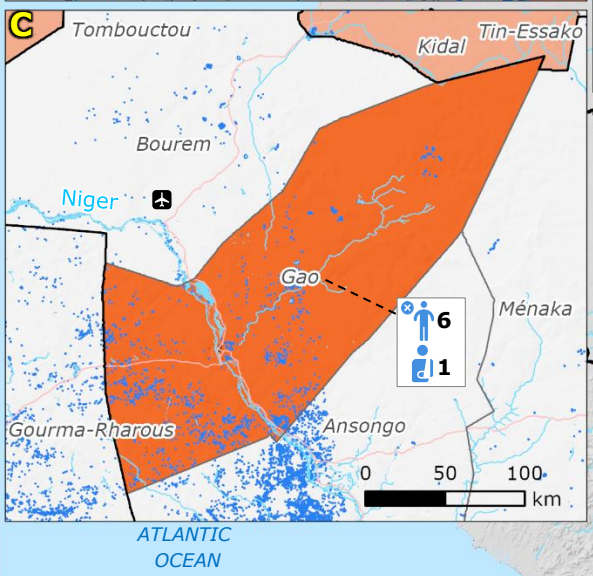
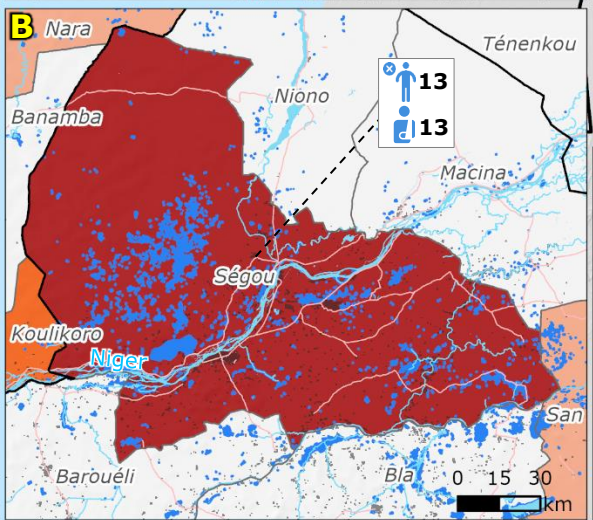
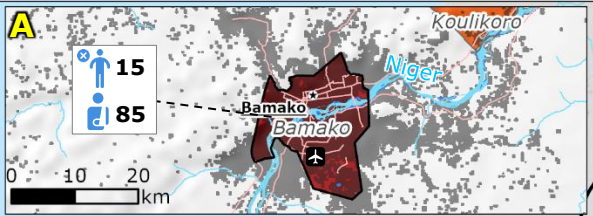


# Mali | July-August floods



### IMPACT OVERVIEW

As of 2 September  
Source: PNRRC\*

- 55** Fatalities
- 112** Injured people
- 73 778** Affected people

\*Plateforme Nationale pour la Réduction des Risques de Catastrophes au Mali

### Impacted people per cercle

Source: PNRRC

10 001 - 34 333	101 - 1 000
1 001 - 10 000	4 - 100

Flooded area, as detected by satellites, over 1 Jul - 1 Sep Source: Copernicus EMS [GIOFAS](#)

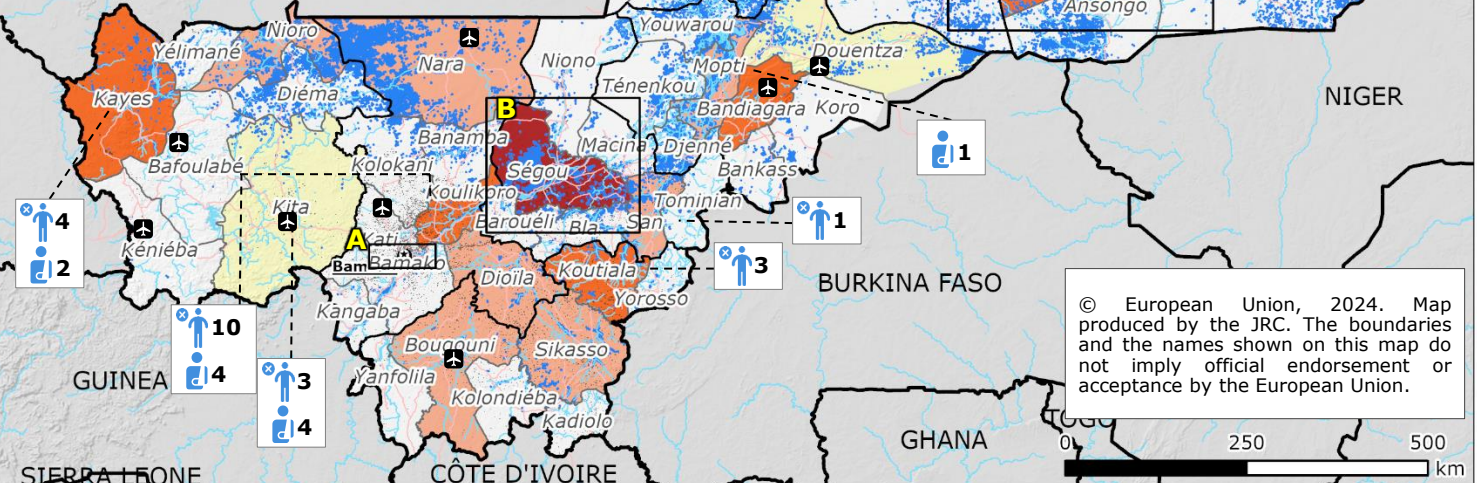
Built-up area Source: Copernicus EMS [GHSL](#)

Main airport Source: OSM

Main road Source: OSM River Source: OSM

### Administrative units

- Cercle boundary
- Region boundary
- Country boundary



© European Union, 2024. Map produced by the JRC. The boundaries and the names shown on this map do not imply official endorsement or acceptance by the European Union.