

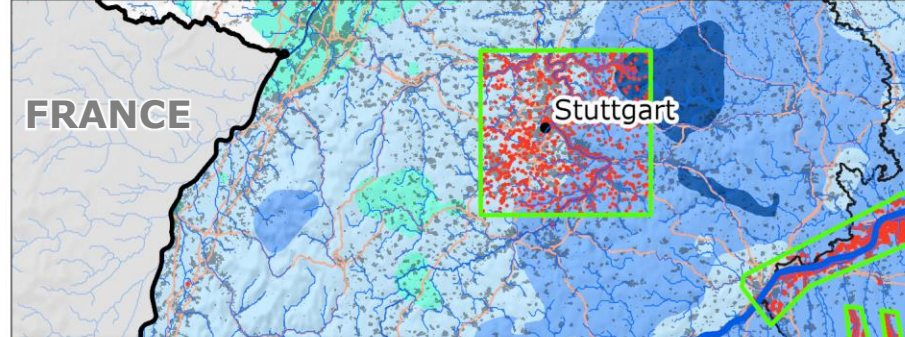
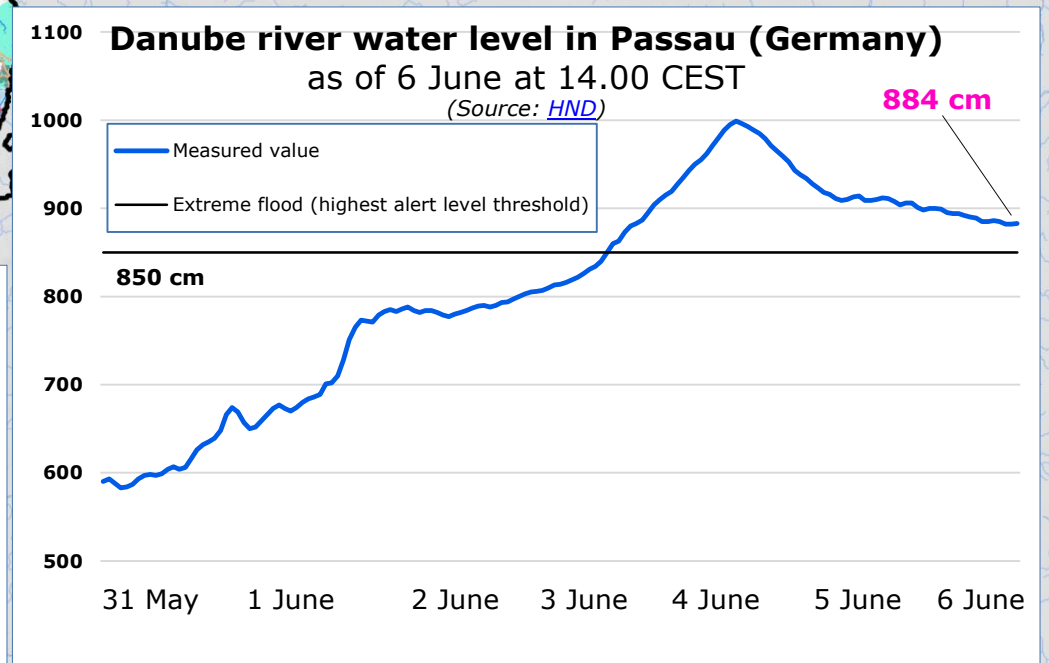
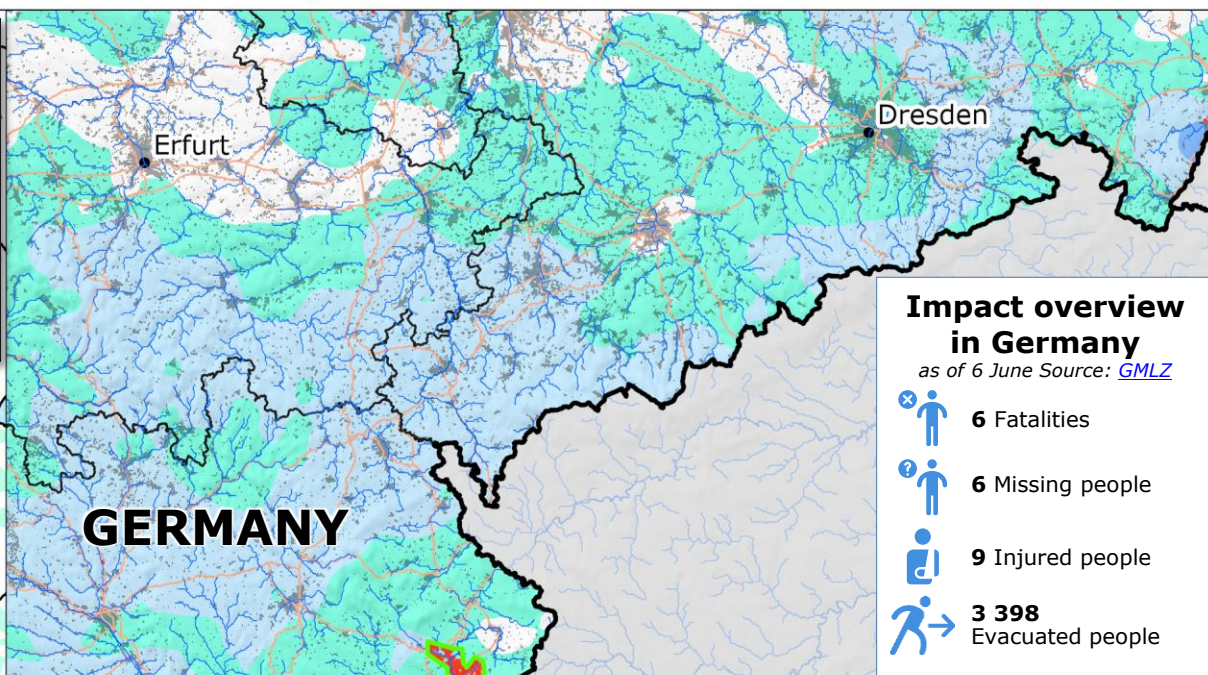
Central Europe | Severe weather and floods



3-day rainfall forecast over 6-8 June
 Source: [ECMWF](#)

- 26 - 50 mm
- 11 - 25 mm

District under severe flood warning as of 6 June at 15.01 CEST Source: [HND](#)



Rainfall accumulation
 observed over 30 May - 4 June
 Source: [JRC EFAS](#)

- 201 - 350 mm
- 101 - 200 mm
- 51 - 100 mm
- 26 - 50 mm

Copernicus EMSR728 activation
 activation date: 30 May

Area of Interest (AoI)

Flood measurements
 As of 6 June at 14.00 CEST Source: [HND](#)

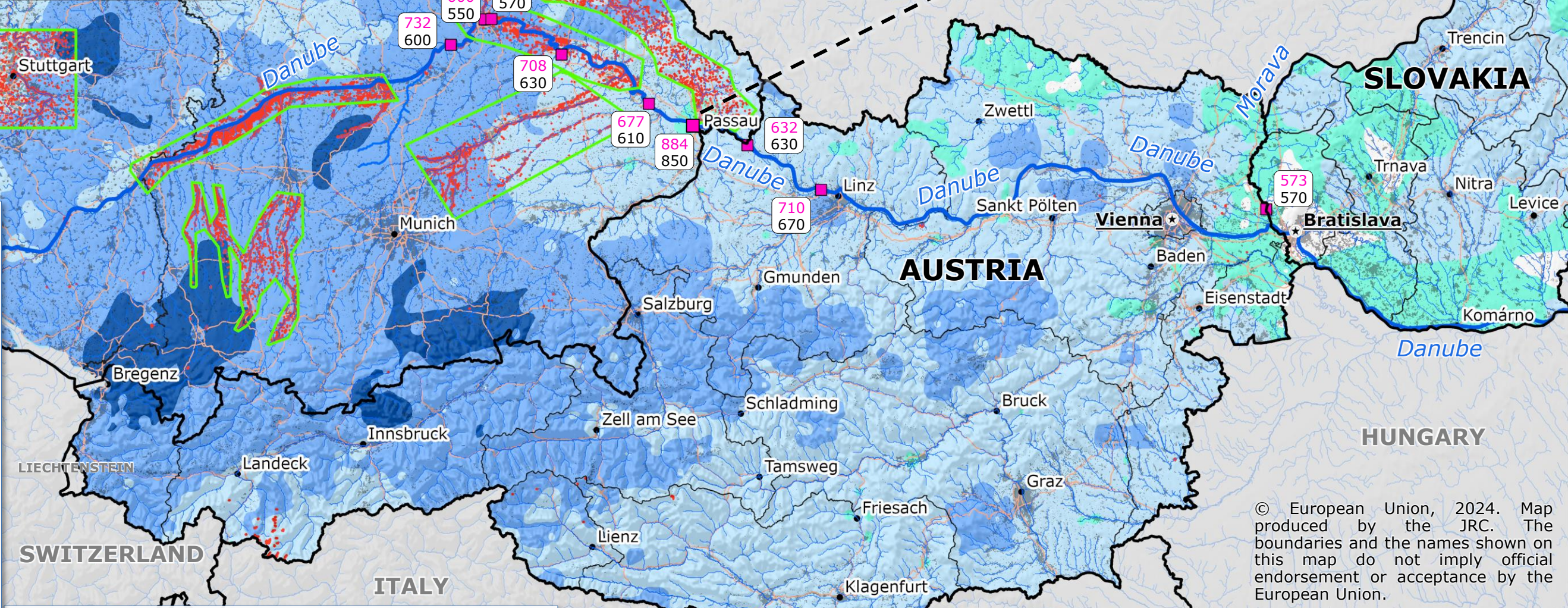
- Station at current highest alert level in each country*
- Last measured value
- Highest alert level

Densely populated Area Source: [JRC GHSL](#)

Roads

Region boundary

Country boundary



*Germany: Extreme flood (Source: [HND](#))
 Austria: High level water that statistically occurs 1x in 5 years (Source: [hydro.ooe](#))
 Slovakia: Level 2 flood activity degree (Source: [SHMU](#))

© European Union, 2024. Map produced by the JRC. The boundaries and the names shown on this map do not imply official endorsement or acceptance by the European Union.

