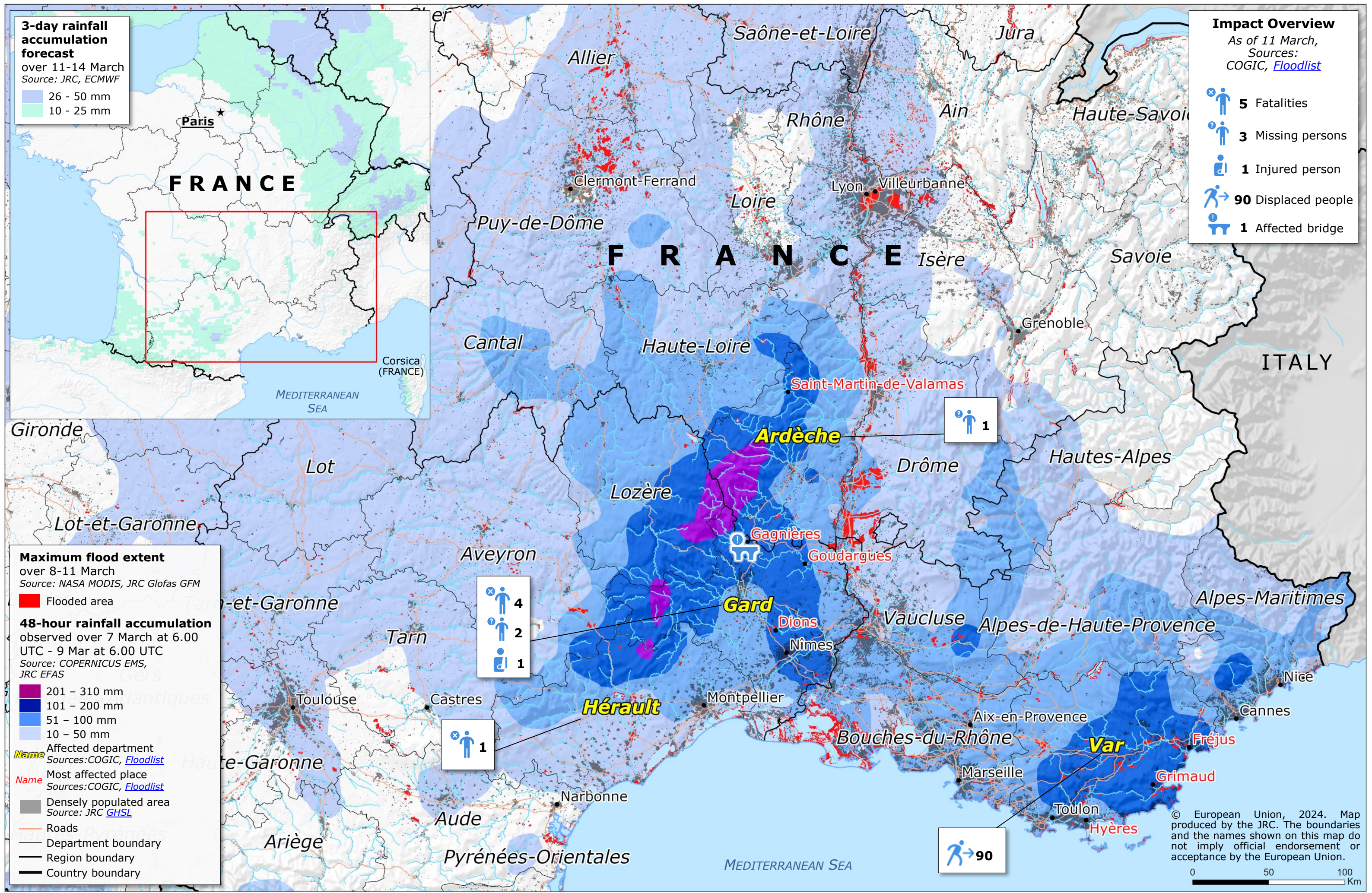


Southern France | Severe weather and floods



3-day rainfall accumulation forecast
over 11-14 March
Source: JRC, ECMWF

- 26 - 50 mm
- 10 - 25 mm

Impact Overview
As of 11 March,
Sources: COGIC, Floodlist

- 5 Fatalities
- 3 Missing persons
- 1 Injured person
- 90 Displaced people
- 1 Affected bridge

Maximum flood extent
over 8-11 March
Source: NASA MODIS, JRC Glofas GFM

- Flooded area

48-hour rainfall accumulation
observed over 7 March at 6.00 UTC - 9 Mar at 6.00 UTC
Source: COPERNICUS EMS, JRC EFAS

- 201 - 310 mm
- 101 - 200 mm
- 51 - 100 mm
- 10 - 50 mm

Name Affected department
Sources: COGIC, Floodlist

Name Most affected place
Sources: COGIC, Floodlist

- Densely populated area
Source: JRC GHSL
- Roads
- Department boundary
- Region boundary
- Country boundary