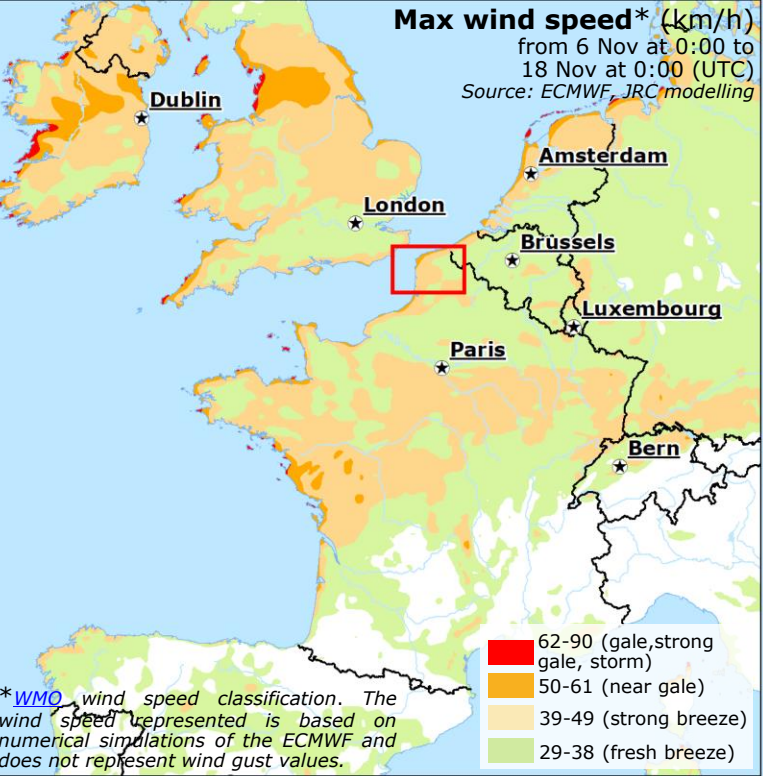
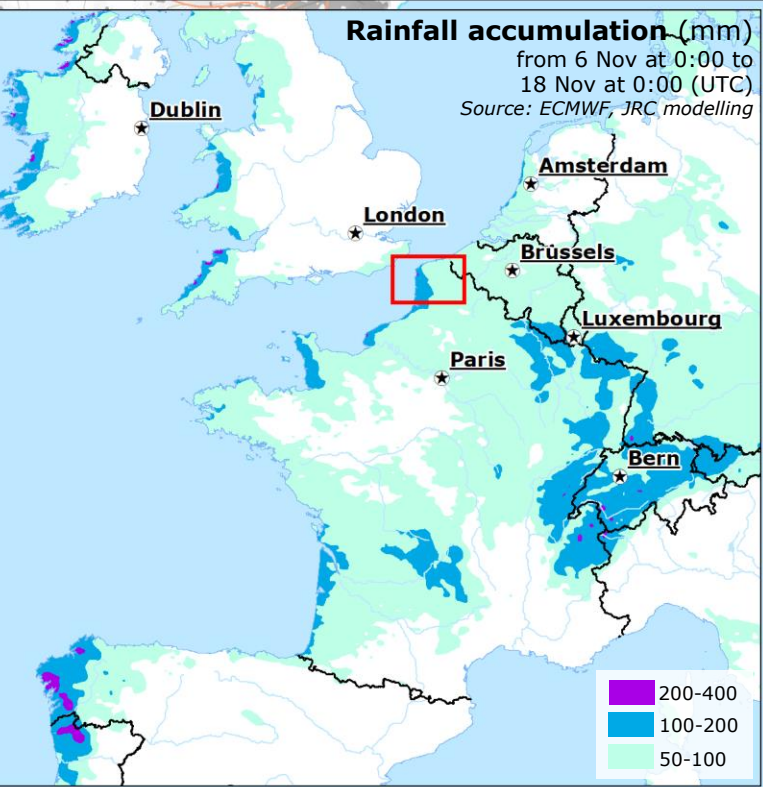


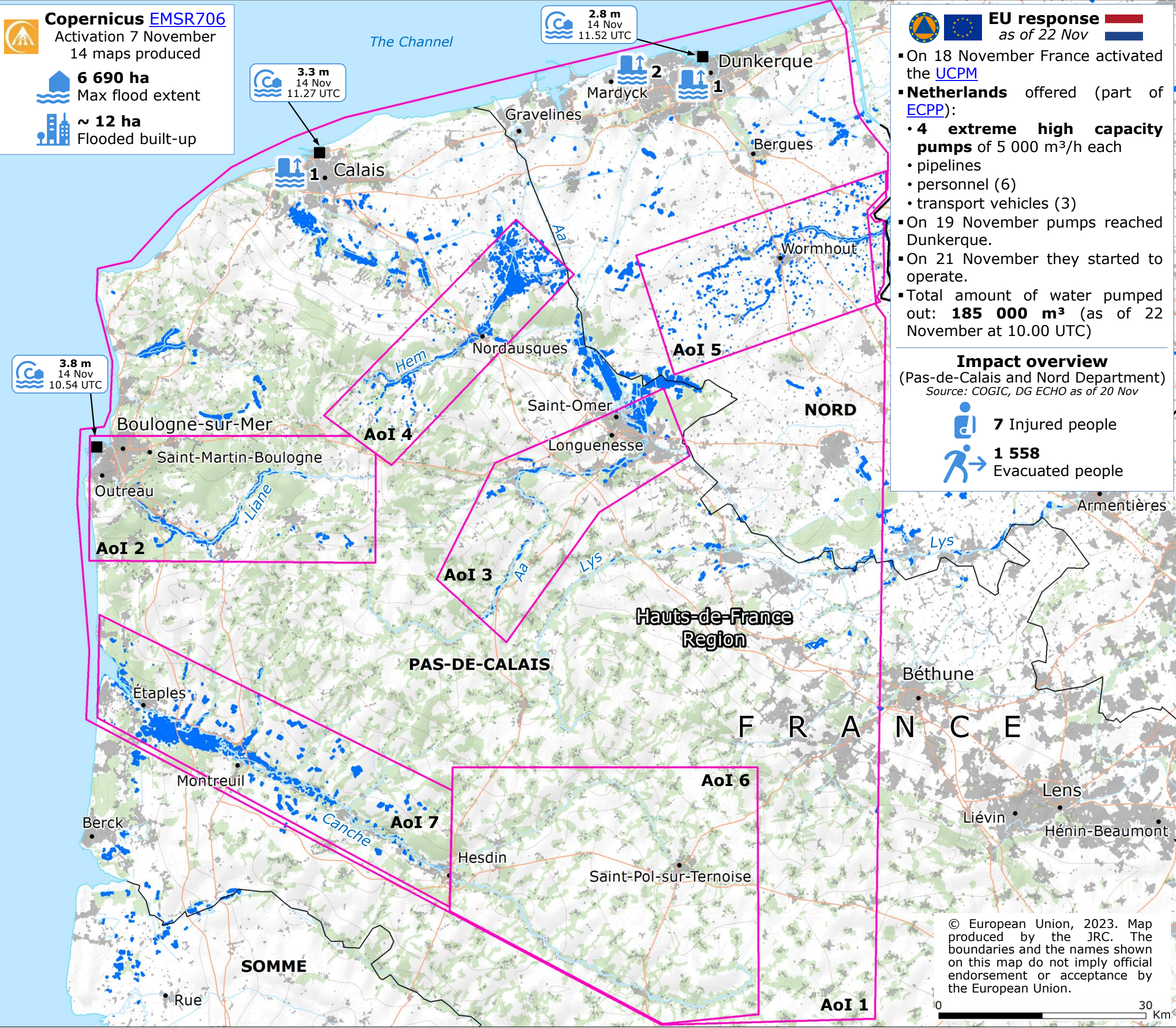
France | Floods and EU response



Copernicus EMSR706
Activation 7 November
14 maps produced

6 690 ha
Max flood extent

~ 12 ha
Flooded built-up



EU response
as of 22 Nov

- On 18 November France activated the **UCPM**
- Netherlands** offered (part of **ECPP**):
 - 4 extreme high capacity pumps of 5 000 m³/h each
 - pipelines
 - personnel (6)
 - transport vehicles (3)
- On 19 November pumps reached Dunkerque.
- On 21 November they started to operate.
- Total amount of water pumped out: **185 000 m³** (as of 22 November at 10.00 UTC)

Impact overview
(Pas-de-Calais and Nord Department)
Source: COGIC, DG ECHO as of 20 Nov

7 Injured people

1 558 Evacuated people

Copernicus EMSR706 activation Area of Interest (AoI)

Flooded area over 7-20 Nov
Source: Copernicus EMSR706, JRC GloFAS GFM

Extreme high capacity pump location

Observed storm surge (meters) at tide gauge (time UTC)
Source: UNESCO/IOC

Built-up area
Source: JRC GHSL 2022

Forest and semi-natural area

Main road Department limit

© European Union, 2023. Map produced by the JRC. The boundaries and the names shown on this map do not imply official endorsement or acceptance by the European Union.

