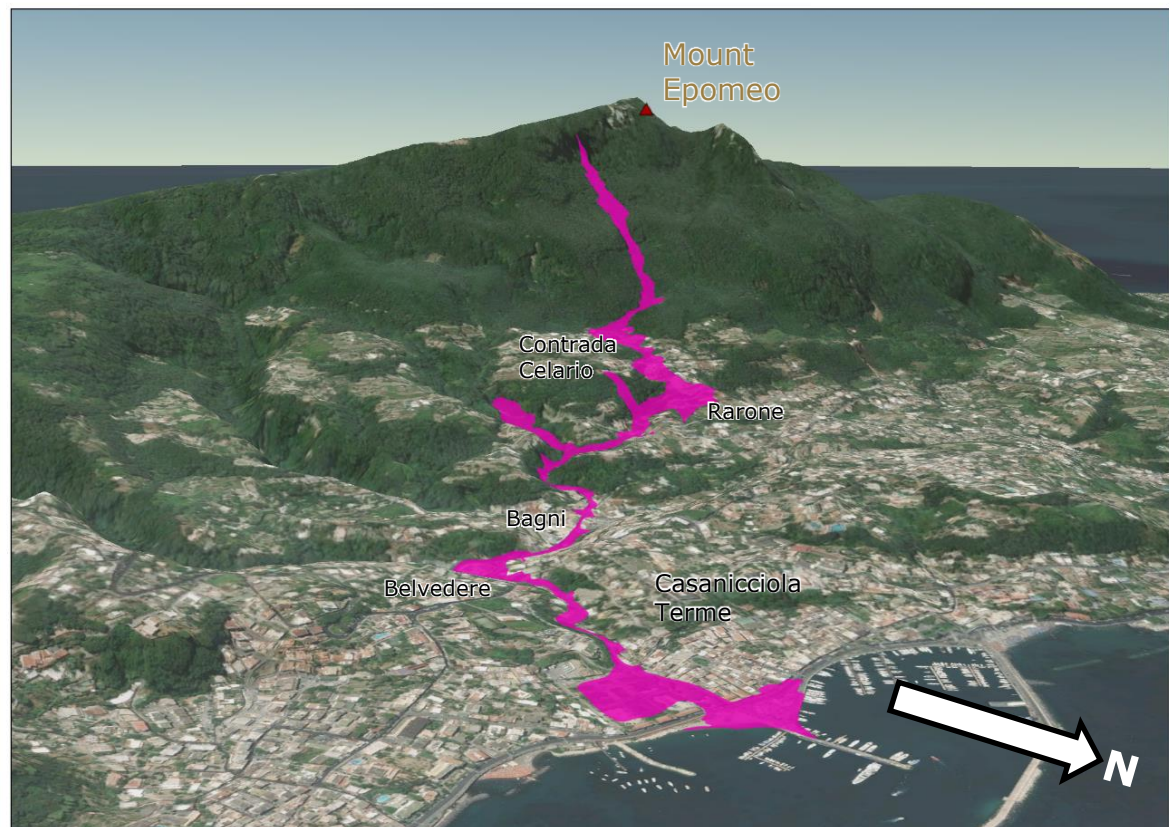


Italy (Ischia Island) | Landslide event of 26 November



¹Area potentially affected by the landslide, detected by the JRC from image interpretation of the post-event aerial imageries provided by the Compagnia Generale di Riprese Aeree (CGR, Parma, Italy) on behalf of Copernicus EMS.

²Observed rain gauge data did not undergo a full validation process since they are received in real time.

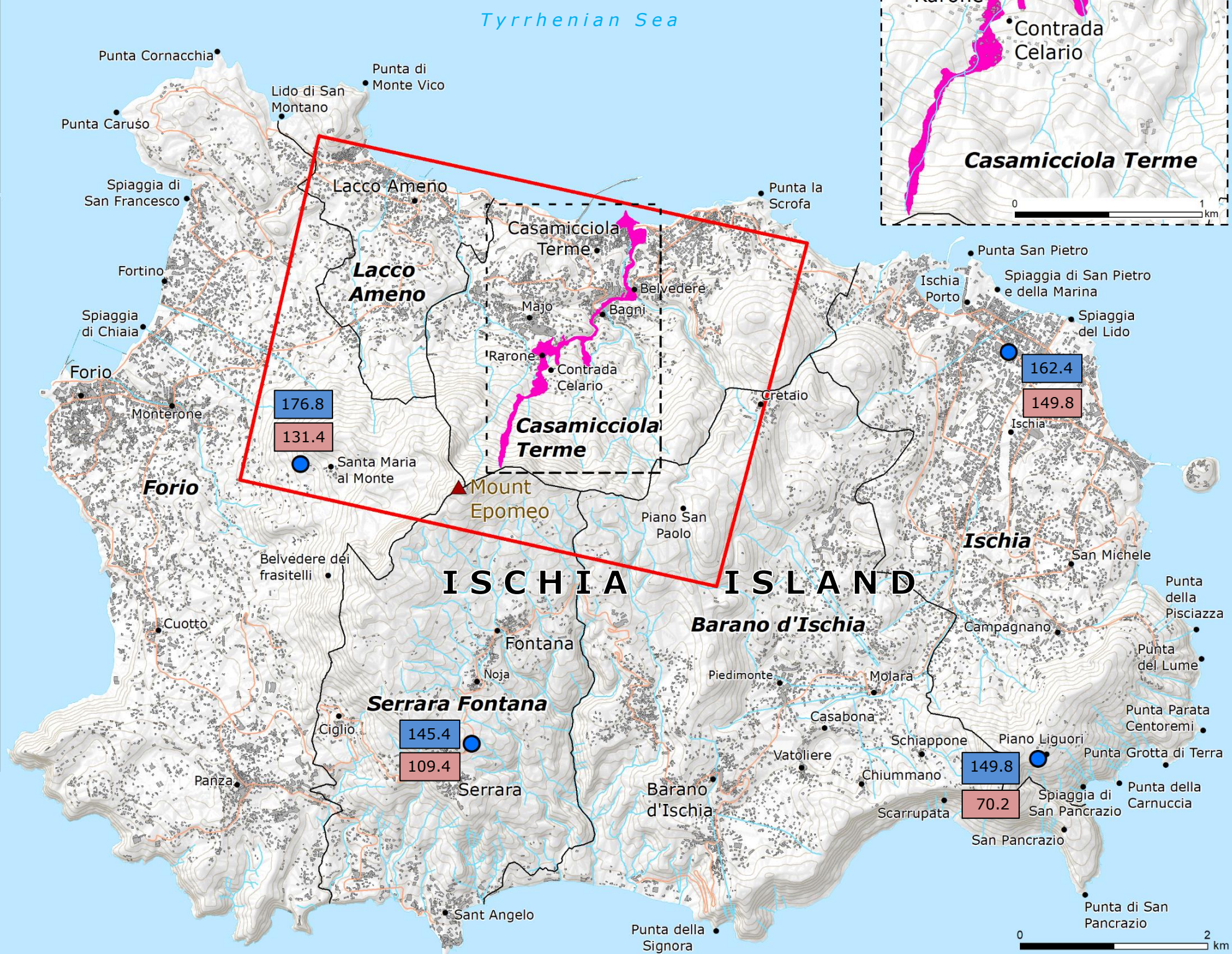
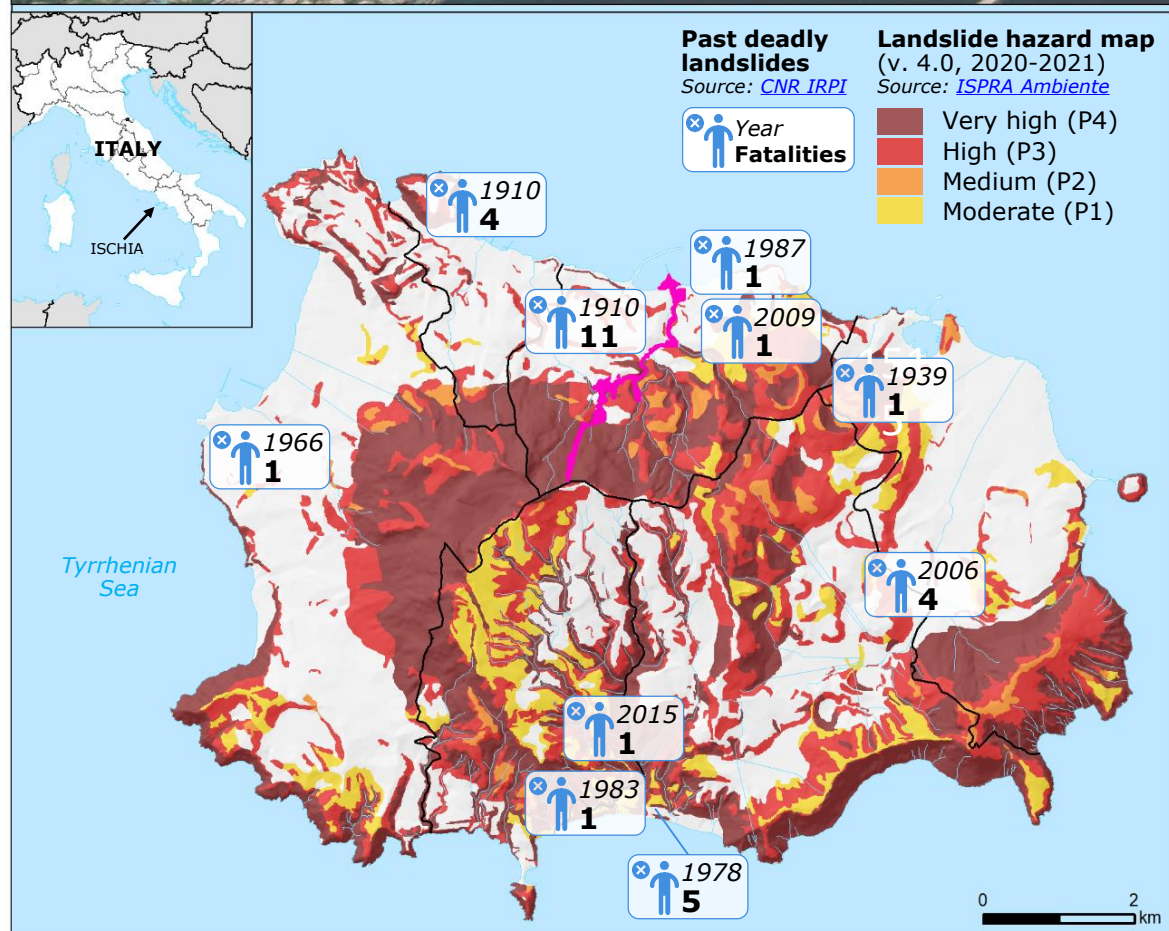
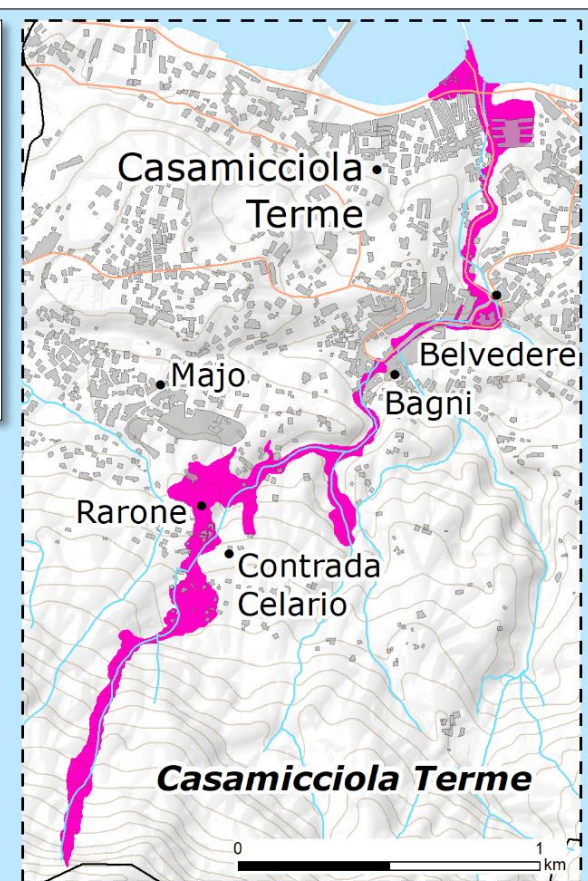
© European Union, 2022. Map produced by the JRC. The boundaries and the names shown on this map do not imply official endorsement or acceptance by the European Union.

IMPACT OVERVIEW

As of 29 Nov

	8 Fatalities		5 Injured people (including 1 in serious condition)
	4 Missing people		15 Destroyed houses
	290 Evacuated people		650 Support personnel

Source: [Italian Civil Protection](#)



Copernicus EMSR643 Activation
Activation date: 26 Nov

- Area of Interest (AoI)
- Detected landslide area¹

Observed rainfall value (mm) at gauge station²
Source: [Italian Civil Protection-Campania Region](#)

- Rain gauge station
- Rainfall value in 24 hours on 26 Nov
- Rainfall value in 6 hours on 26 Nov

Legend:
 - River/waterway
 - Road
 - Built-up area (Source: OSM)
 - Municipality boundary