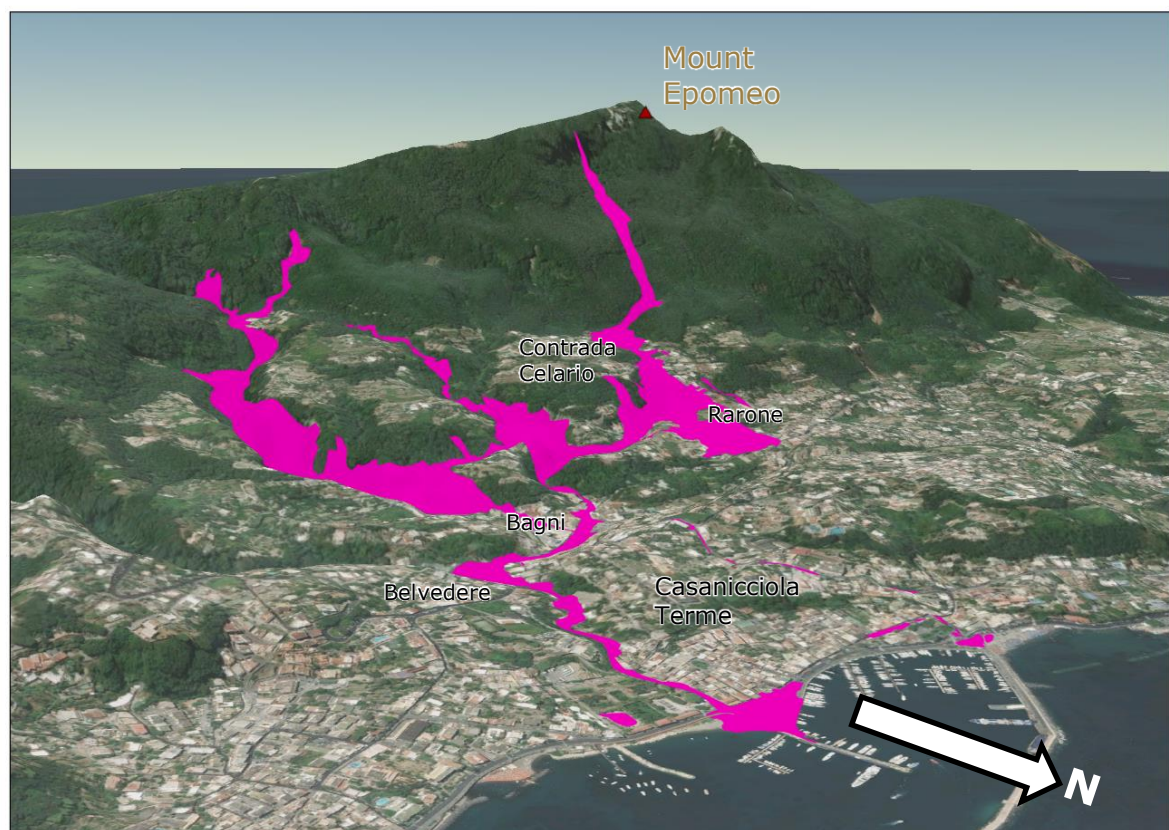


# Italy (Ischia Island) | Landslide event of 26 November



<sup>1</sup>Observed rain gauge data did not undergo a full validation process since they are received in real time.

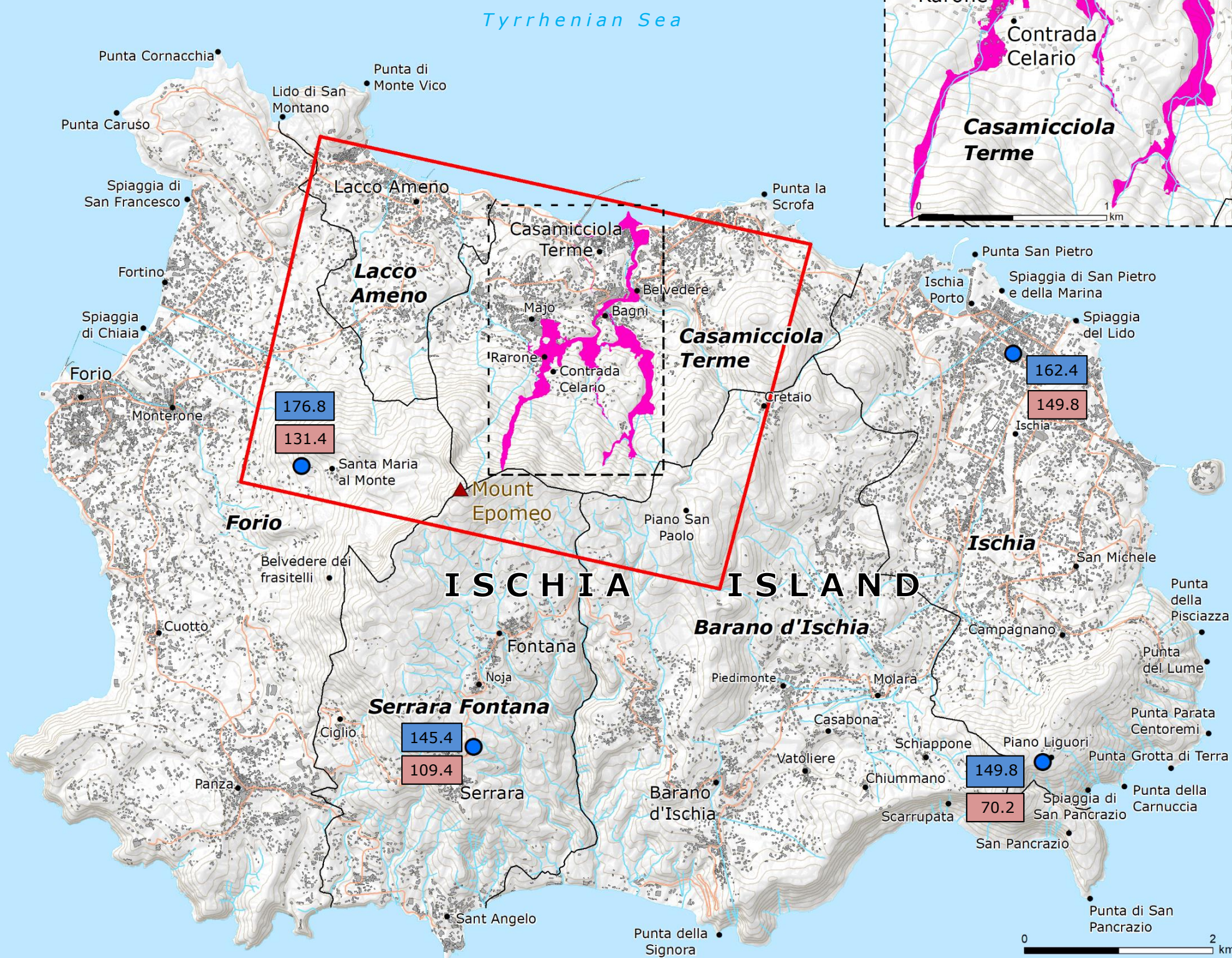
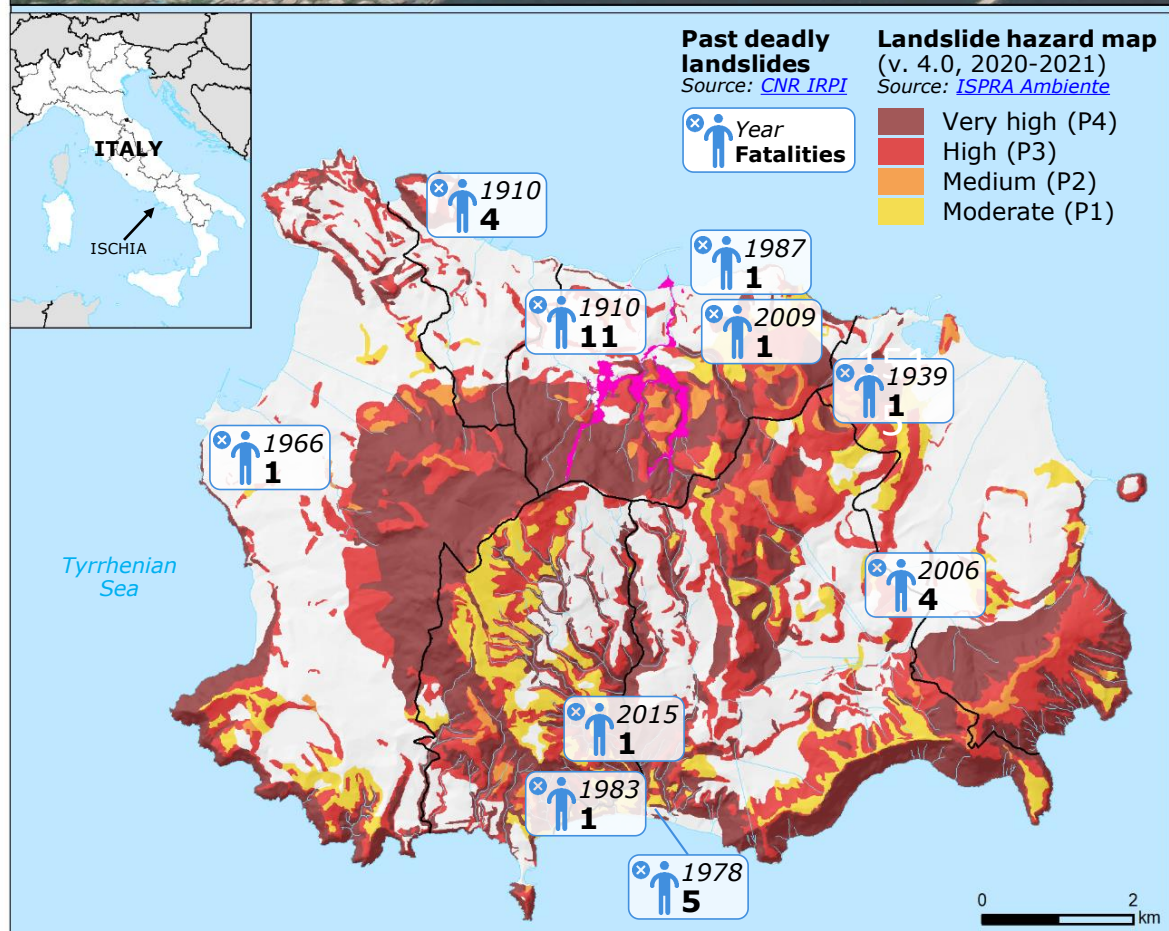
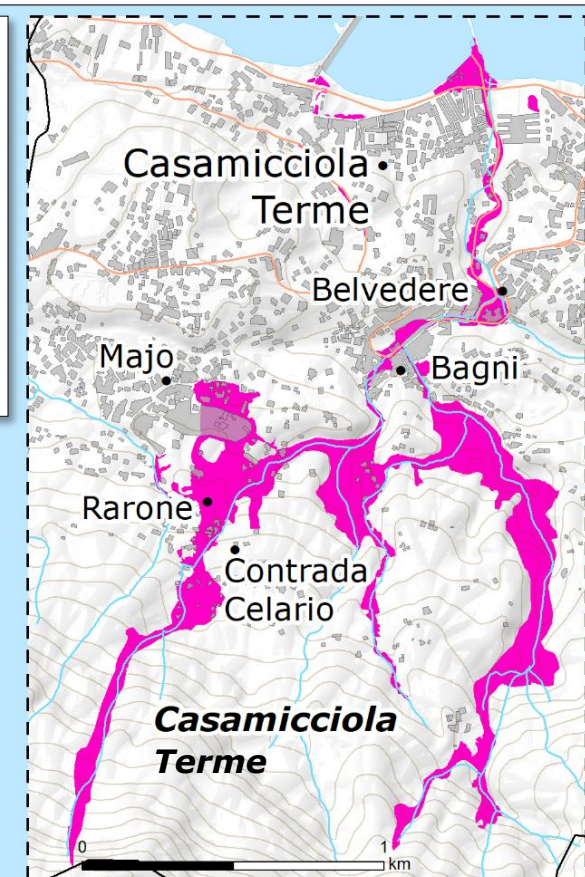
© European Union, 2022. Map produced by the JRC. The boundaries and the names shown on this map do not imply official endorsement or acceptance by the European Union.

### IMPACT OVERVIEW

As of 29 Nov

	<b>8</b> Fatalities		<b>5</b> Injured people (including 1 in serious condition)
	<b>4</b> Missing people		<b>15</b> Destroyed houses
	<b>290</b> Evacuated people		<b>650</b> Support personnel

Source: [Italian Civil Protection](#)



**Copernicus EMSR643 Activation**  
Activation date: 26 Nov

- Area of Interest (AoI)
- Affected area

**Observed rainfall value (mm) at gauge station<sup>1</sup>**  
Source: [Italian Civil Protection-Campania Region](#)

- Rain gauge station
- Rainfall value in 24 hours on 26 Nov
- Rainfall value in 6 hours on 26 Nov

**Map Legend:**

- River/waterway
- Road
- Built-up area  
Source: [OSM](#)
- Municipality boundary