

INDIA, Kerala | Monsoon Floods

Currently affected districts
(as of 20 Aug)

RAINFALL EXCESS ABOVE NORMAL 1 JUNE - 19 AUG
Source: IMD

- Large excess (> 59%)
- Excess (20% - 59%)

Landslide triggered by flood (8 - 19 Aug)

Exposed dam

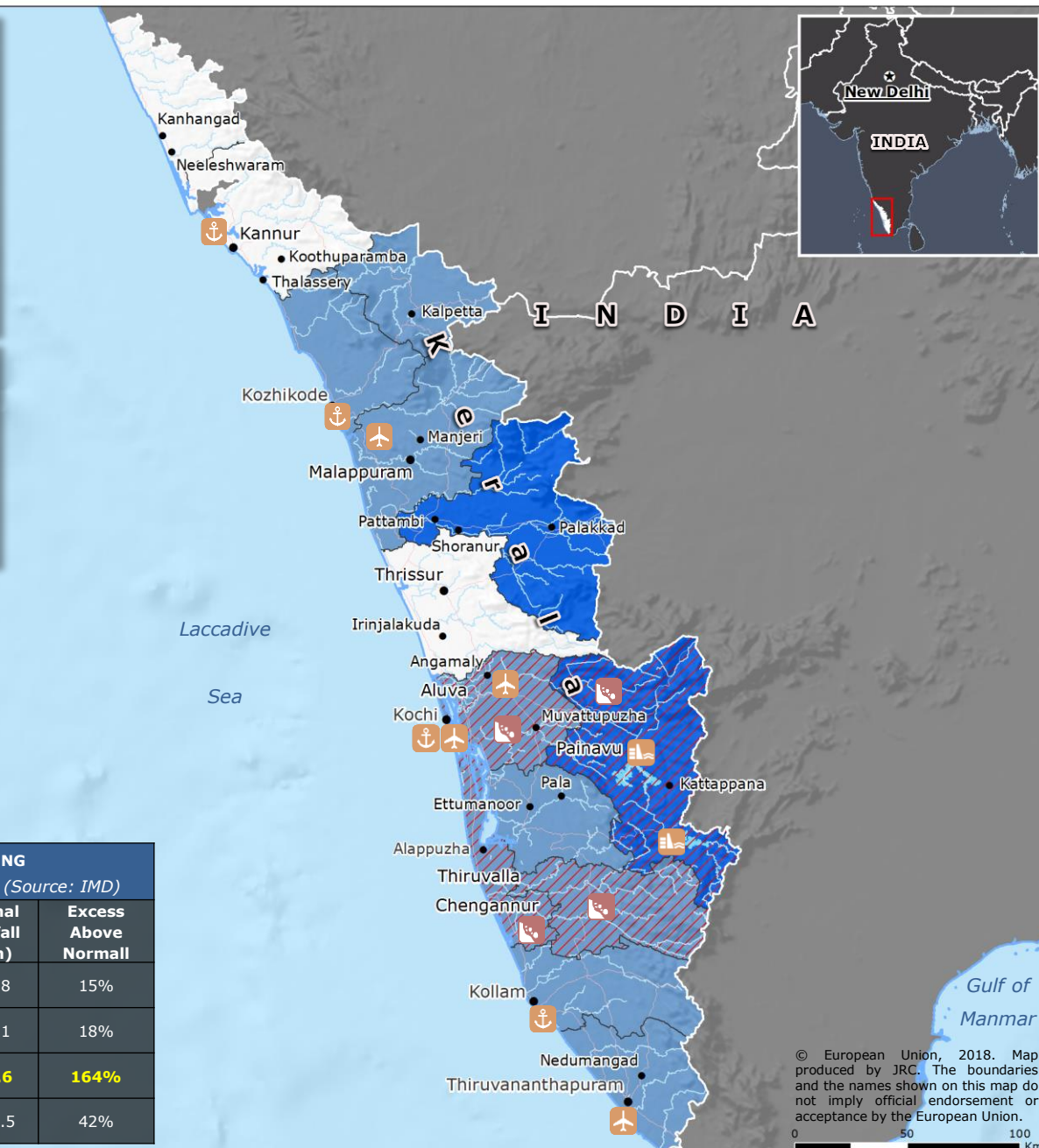
Port

Airport

IMPACT OVERVIEW
1 June - 20 Aug
Source: DG ECHO

- 324** Fatalities
- 223 000** Evacuated people
- 1 568** Relief camps

RAINFALL DURING MONSOON SEASON 2018 (Source: IMD)			
Period	Actual Rainfall (mm)	Normal Rainfall (mm)	Excess Above Normal
June	749.6	649.8	15%
July	857.4	726.1	18%
1-19 Aug	758.6	287.6	164%
1 June - 19 Aug	2346.6	1649.5	42%



© European Union, 2018. Map produced by JRC. The boundaries and the names shown on this map do not imply official endorsement or acceptance by the European Union.

