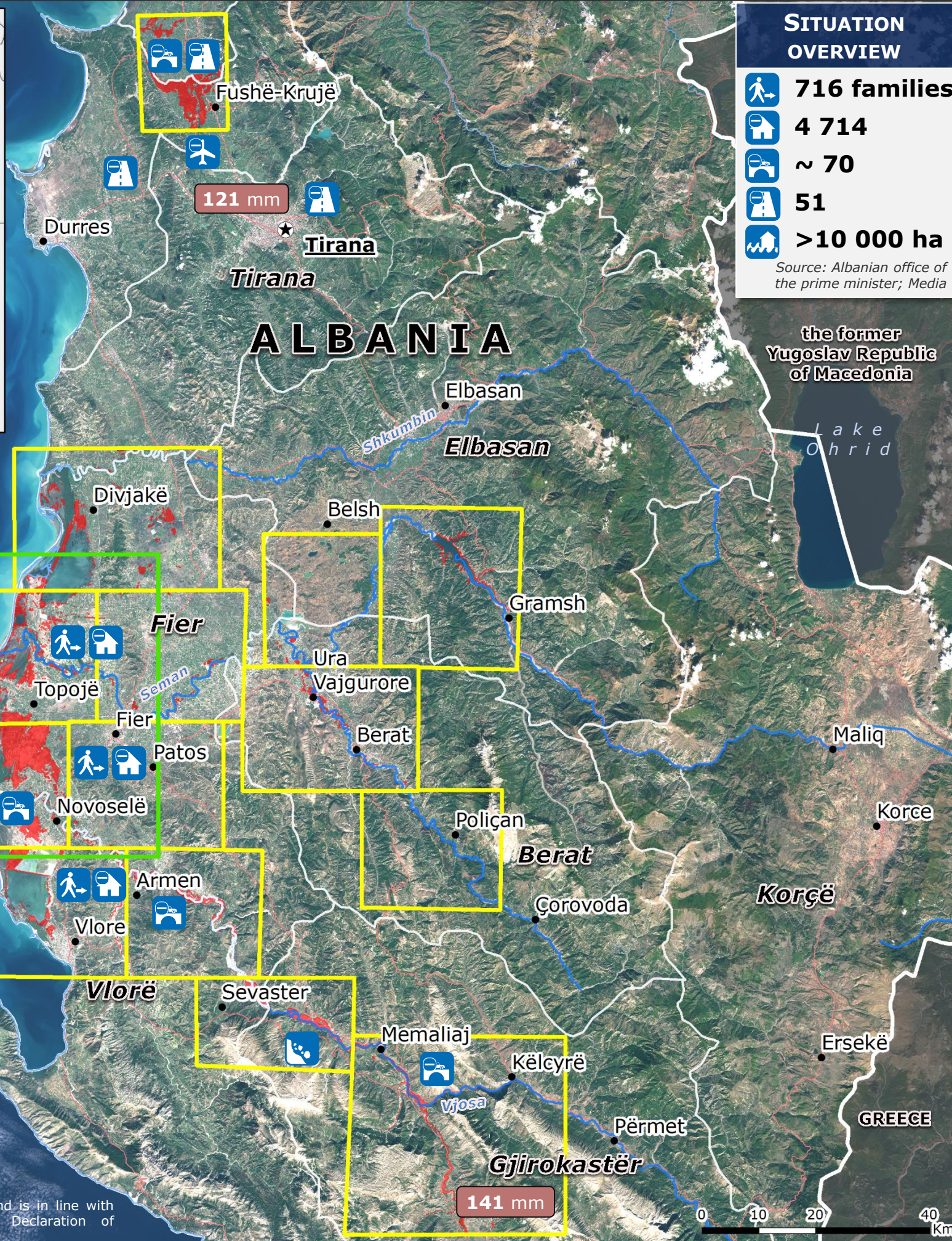


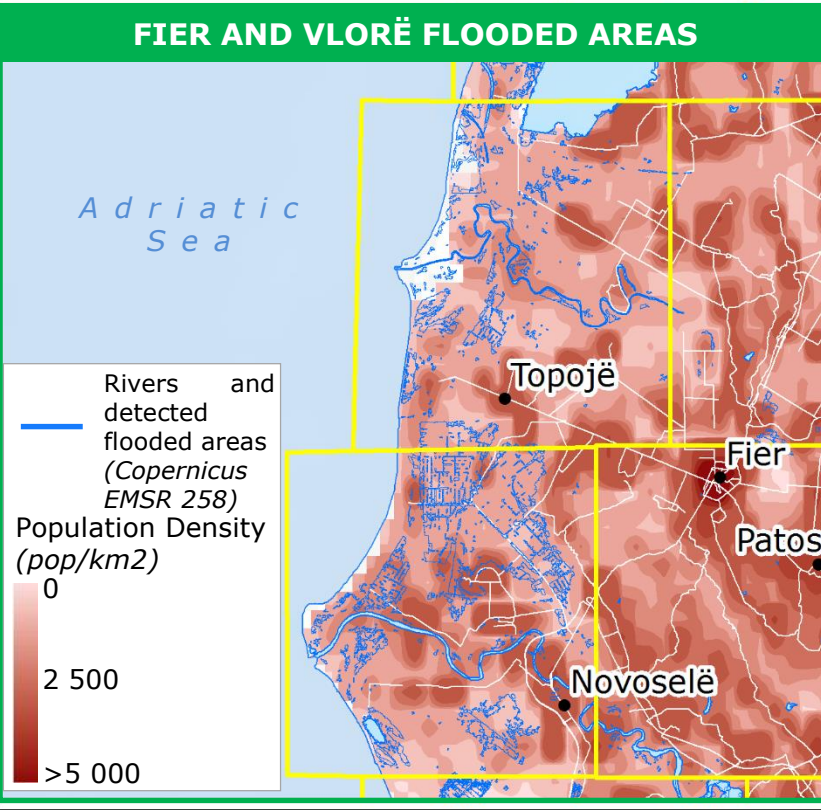
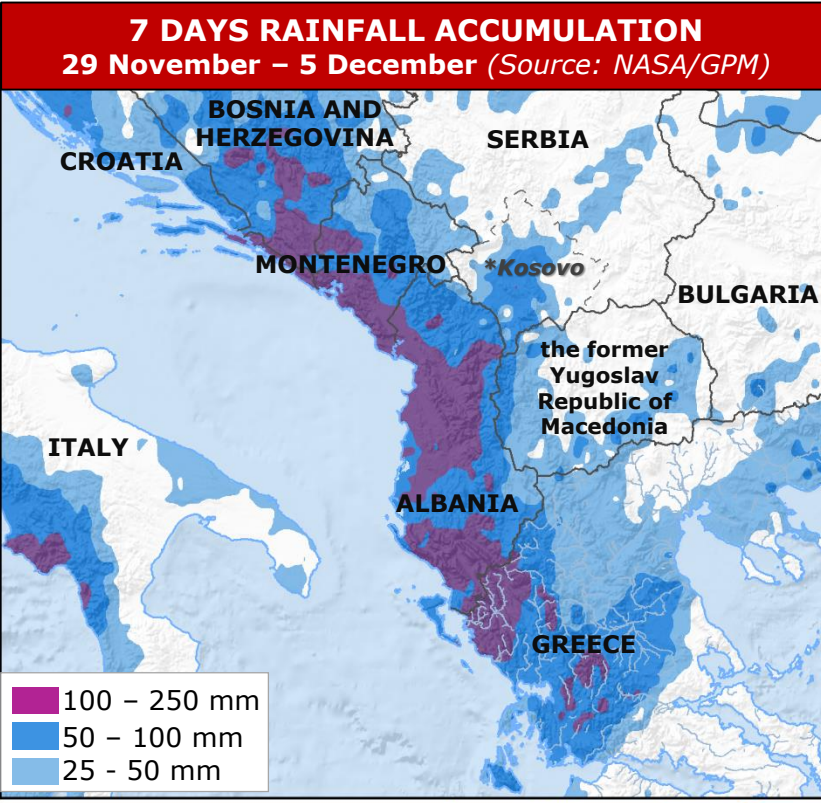
Albania | Severe weather/Floods



SITUATION OVERVIEW

- 716 families**
- 4 714**
- ~ 70**
- 51**
- >10 000 ha**

Source: Albanian office of the prime minister; Media



COPERNICUS EMS ACTIVATION (EMSR258)

© 2017 EU

- Copernicus covered areas
- Flooded Areas
- River of interest
- Main road
- Rainfall accumulation mm/24h as of 1 Dec.

- Families displaced
- Damaged building
- Bridge damaged
- Mudslide
- Road interrupted
- Airport affected
- Flooded area

EU Civil Protection Mechanism (EUCPM)

- On 5 December the **UCPM** was **activated** after receiving a request from **Albania**.
- Priority requested items** are bridge reconstruction elements, power generators, water motor pumps, water safety and rescue garments and other relief items.
- 18 maps** have been produced so far by the **Copernicus** Emergency Management Service

* This designation is without prejudice to positions on status, and is in line with UNSCR 1244/1999 and the ICJ Opinion on the Kosovo Declaration of Independence.
© European Union, 2017. Map produced by JRC-EC/DG ECHO. The boundaries and the names shown on this map do not imply official endorsement or acceptance by the European Union.