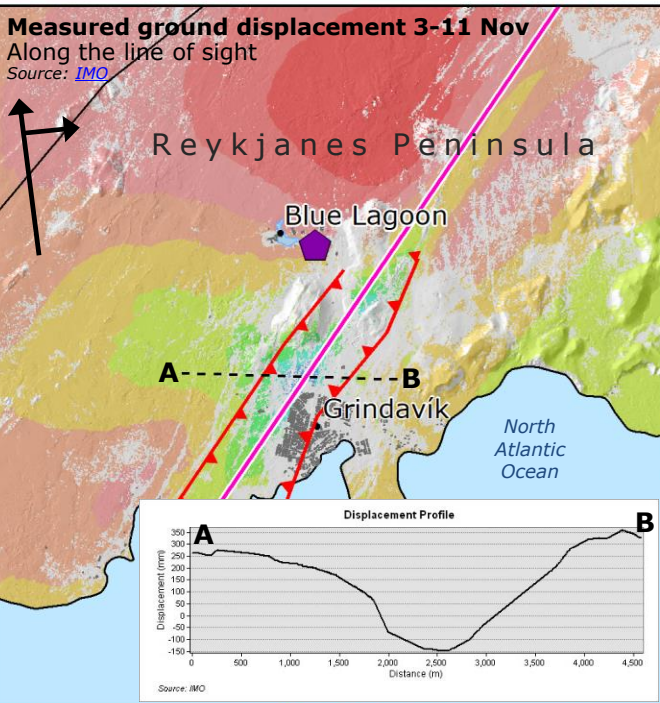


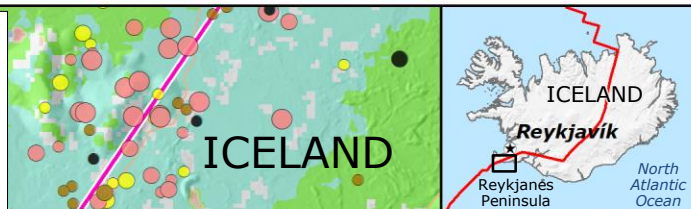
# Iceland | Reykjanes peninsula volcanic unrest update



### Impact overview in Grindavik town as of 27 November

Source: Iceland CP, DG ECHO

- 3 700** Preventively evacuated people (entire town)
- People allowed to temporarily enter in Grindavik (9.00 – 16.00 h)
- Building of a defense wall around Svartsengi power plant ongoing
- Alert level downgraded from emergency to danger level
- Electricity and water/drainage disruption
- Damaged houses
- Damaged roads (some access roads closed)
- All shops closed

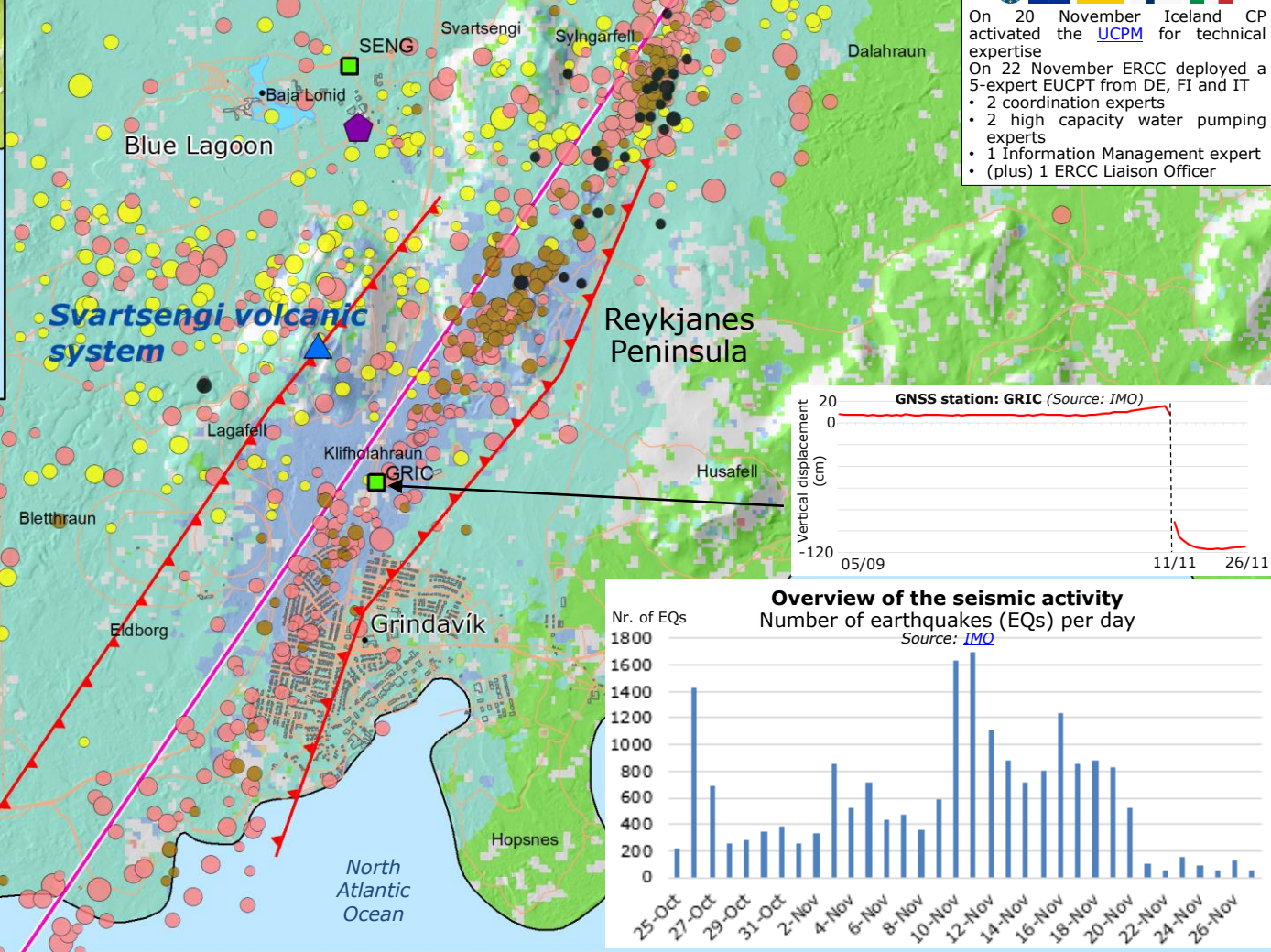


### UCPM response

On 20 November Iceland CP activated the UCPM for technical expertise

On 22 November ERCC deployed a 5-expert EUCPT from DE, FI and IT

- 2 coordination experts
- 2 high capacity water pumping experts
- 1 Information Management expert
- (plus) 1 ERCC Liaison Officer



### Ground vertical displacement 10-11 Nov

Source: IMO

**Recent seismic activity 1 - 27 Nov**  
Source: IMO

Displacement	Magnitude	Timeline
70-136 cm	4 - 5 Magnitude	22 - 27 Nov
60-70 cm	3 - 4 Magnitude	15 - 21 Nov
50-60 cm	2 - 3 Magnitude	8 - 14 Nov
40-50 cm	1.5 - 2 Magnitude	1 - 7 Nov
30-40 cm		
20-30 cm		
10-20 cm		
0-10 cm		
-10 to 0 cm		
-135 to -10 cm		

**Legend:**

- Graben boundary Source: IMO
- Dyke intrusion Source: IMO
- Ridge Source: GEM
- Svartsengi geothermal power plant
- GNSS station (with name) Source: IMO
- Active volcano Source: IV
- Built-up area
- Road

**Vertical displacement:**

- Toward satellite
- Away from satellite

