

Morocco | 6.8 M Earthquake of 8 September

IMPACT OVERVIEW

Source: [Government of Morocco](#) as of 14 September

2 946 Fatalities **5 674** Injured people

EU RESPONSE

DG ECHO has allocated **EUR 200 000** in support of the Morocco Red Crescent via the IFRC's Disaster Response Emergency Fund (DREF), in addition to **EUR 800 000** from the Acute Large Emergency Response Tool (ALERT) to support humanitarian aid operations.

DG ECHO staff deployed (x2)

Copernicus EMSR695, Activation 9 September
16 maps produced (as of 14 September)

SATELLITE DAMAGE ASSESSMENT

Copernicus EMSR695

AoI	Affected buildings*	Total buildings in AoI
1	273 (91%)	299
2	192 (100%)	192
3	98 (4%)	2 766
4	36 (2%)	1 546
5	79 (98%)	81
6	130 (100%)	130
7	757 (73%)	1 036
8	93 (93%)	100
Total	1 663 (27%)	6 150

*Destroyed, damaged and possibly damaged. Figures are likely to increase

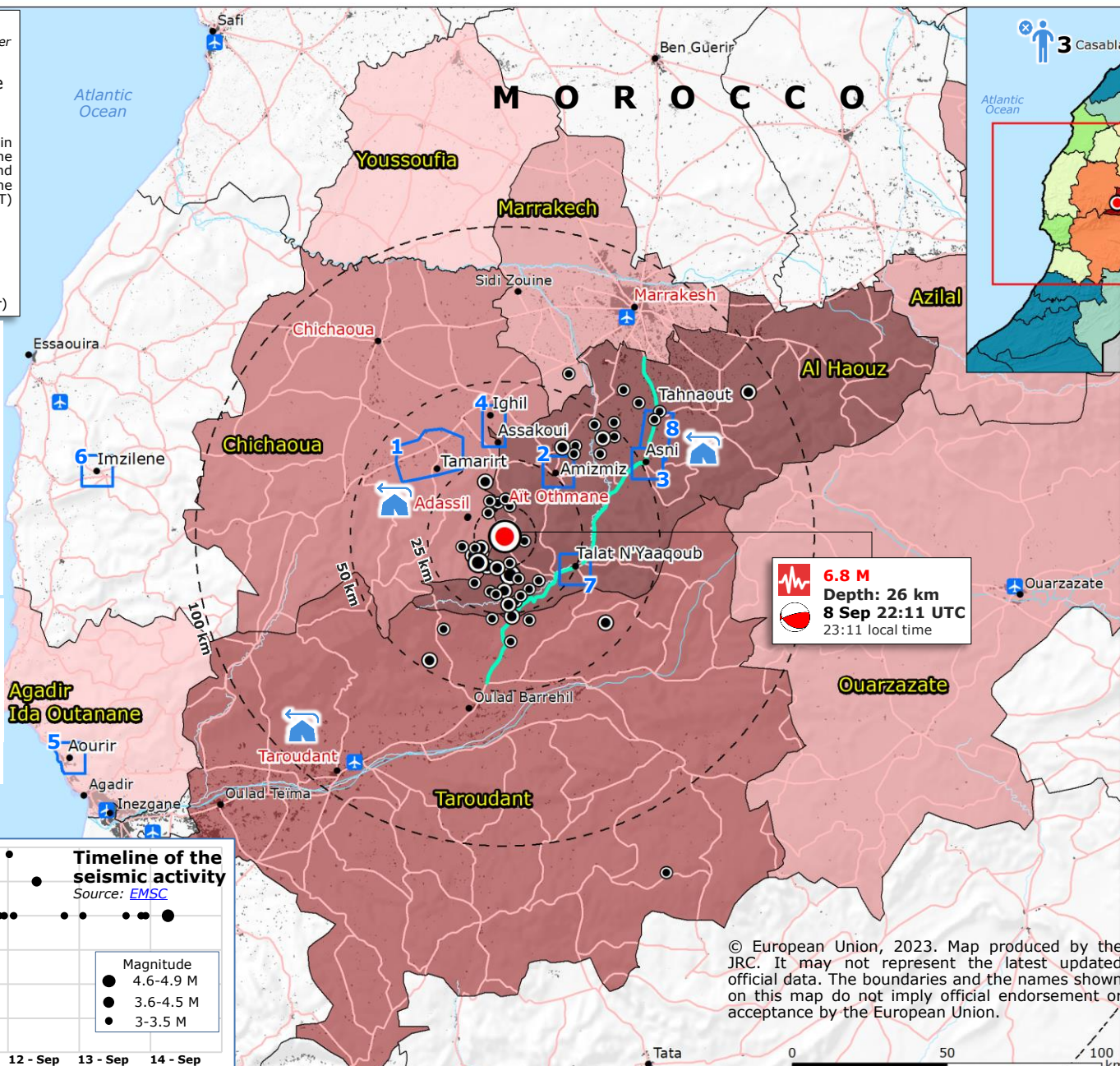
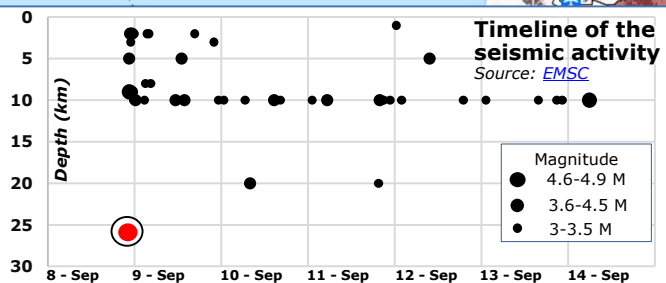
UNITAR-UNOSAT

Place (AOI)	Affected buildings*
Taroudant	617
Ait Othmane	564
Adassil	488
Chichaoua	271
Marrakesh	77
Total	2 017

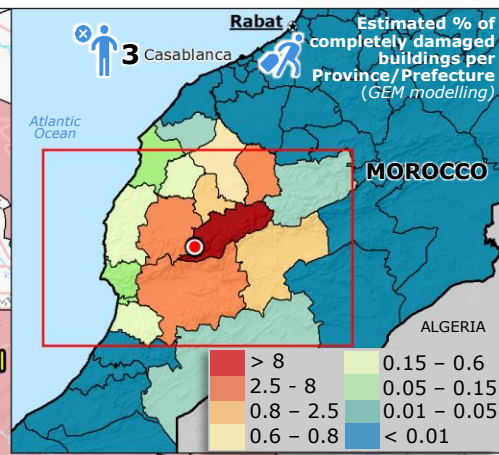
*Destroyed, damaged and possibly damaged. Figures are likely to increase

Timeline of the seismic activity

Source: [EMSC](#)



6.8 M
Depth: 26 km
8 Sep 22:11 UTC
23:11 local time



- Earthquake (EQ) Source: [GDACS](#), [USGS](#)
- Focal mechanism Source: [USGS](#)
- Aftershocks Source: [EMSC](#)
- 4.6 - 4.9 M
- 3.6 - 4.5 M
- 3 - 3.5 M
- Number of fatalities per Province/Prefecture Source: [Government of Morocco](#)
- 1 684
- 980
- 202
- 10 - 50
- 1 - 10
- [GDACS](#) Red alert
- Affected Province
- Built-up Source: [JRC GHSL](#)
- Copernicus EMSR695
- Area of Interest (AoI)
- UNITAR-UNOSAT
- Place Analysed area
- Temporary camps location
- Main road
- Not passable road
- Main airport
- Province and Prefecture boundary

© European Union, 2023. Map produced by the JRC. It may not represent the latest updated official data. The boundaries and the names shown on this map do not imply official endorsement or acceptance by the European Union.