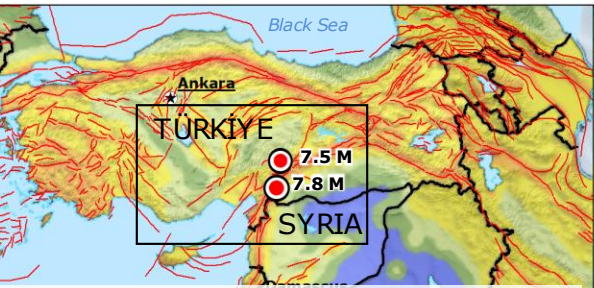


Türkiye, Syria | Seismic activity of 6 February



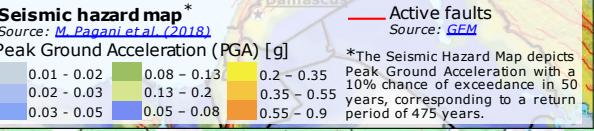
Population exposure to **7.8-7.5 M** earthquake intensity
Source: JRC GHSL, USGS

	Türkiye	Syria
IX	33 500	
VIII	458 000	
VII	4.5 Million	30 600
VI	6.8 Million	3.9 Million
V	9.9 Million	7.5 Million

7.5 M
Source: [GDACS](#), [USGS](#)
7.6 M
Source: [AFAD](#)
Depth: 10 km
6 Feb 10:24 UTC
(13:24 local time)
Glide: [EQ-2023-000015-TUR](#)

Impact Overview

TÜRKİYE		SYRIA	
Source: AFAD		Source: SANA , UN OCHA	
3 703	Fatalities	1 067	Fatalities
22 286	Injured people	2 260	Injured people



7.8 M
Source: [GDACS](#), [USGS](#)
7.7 M
Source: [AFAD](#)
Depth: 18 km
6 Feb 1:17 UTC
(4:17 local time)
Glide: [EQ-2023-000015-TUR](#)

EU Response

as of 7 Feb at 15:00 UTC

On 6 Feb the UCPM with the following offers of assistance have been accepted so far:

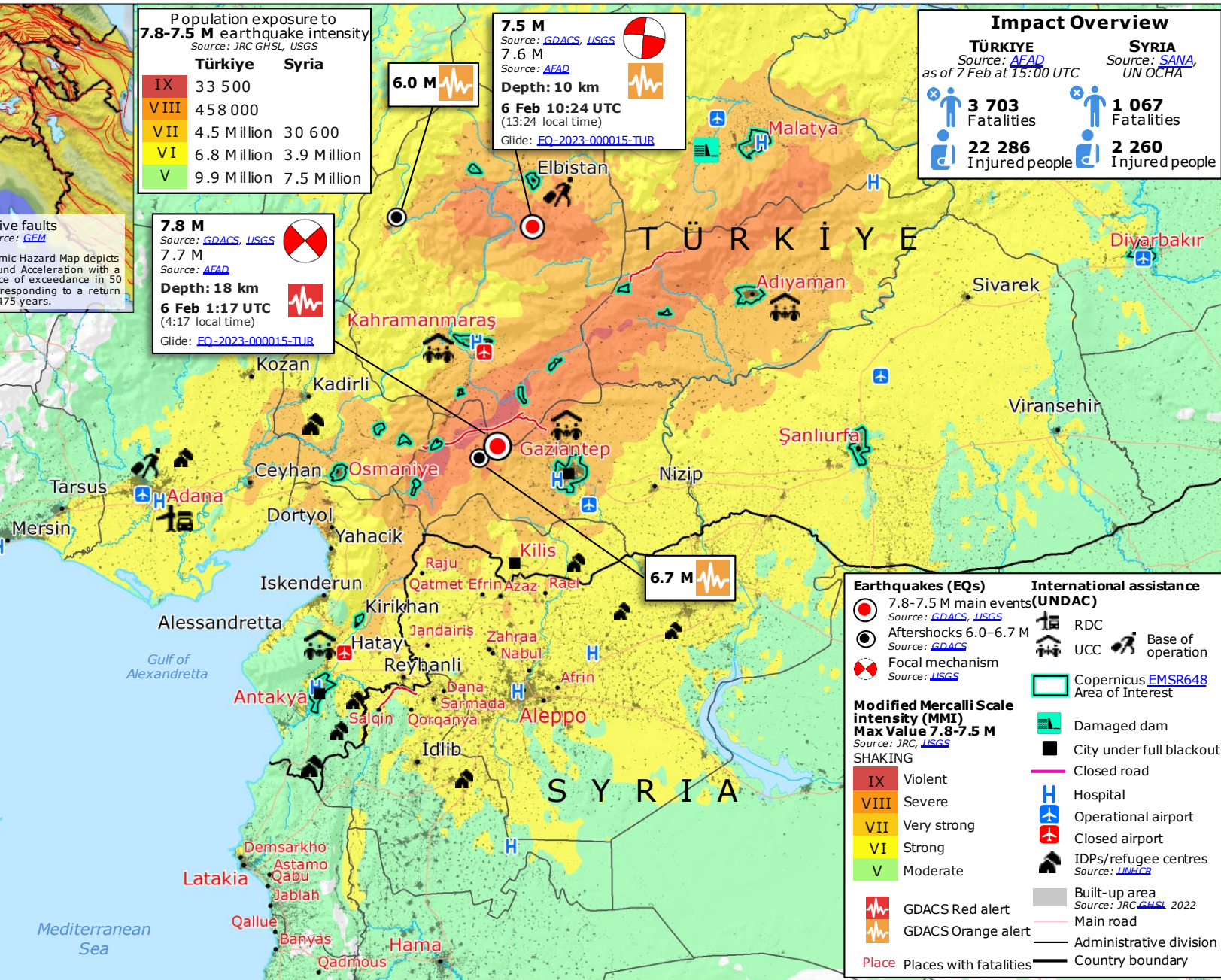
- MUSAR
- HUSAR
- LUSAR
- Medical Team
- EUCPT
- ERCC Liaison Officers
- TAST

Satellite activations

- Copernicus EMS Rapid Mapping activation [EMSR648](#)
- UNITAR-UNOSAT activation [3480](#) (Türkiye) [3479](#) (Syria)
- International Disaster Charter activation [797](#) (Türkiye) [798](#) (Syria)

UCPM: Union Civil Protection Mechanism. EUCPT: EU Civil Protection Team. SAR: Search and Rescue. TAST: Technical Assistance Support Team. RDC: Reception and Departure Centre. UCC: Urban Search and Rescue Coordination Cell. MUSAR: Medium Urban Search and Rescue. HUSAR: Heavy Urban Search and Rescue. LUSAR: Light Urban Search and Rescue.

© European Union, 2023. Map produced by the JRC. The boundaries and the names shown on this map do not imply official endorsement or acceptance by the European Union.



Earthquakes (EQs)

- 7.8-7.5 M main events (Source: [GDACS](#), [USGS](#))
- Aftershocks 6.0-6.7 M (Source: [GDACS](#))
- Focal mechanism (Source: [USGS](#))

International assistance (UNDAC)

- RDC
- UCC
- Base of operation
- Copernicus [EMSR648](#) Area of Interest
- Damaged dam
- City under full blackout
- Closed road
- Hospital
- Operational airport
- Closed airport
- IDPs/refugee centres (Source: [UNHCR](#))
- Built-up area (Source: [JRC GHSL](#), 2022)
- Main road
- Administrative division
- Country boundary

Modified Mercalli Scale intensity (MMI)

Max Value **7.8-7.5 M**
Source: [JRC](#), [USGS](#)

Intensity	Description
IX	Violent
VIII	Severe
VII	Very strong
VI	Strong
V	Moderate

SHAKING

- GDACS Red alert
- GDACS Orange alert

Place: Places with fatalities