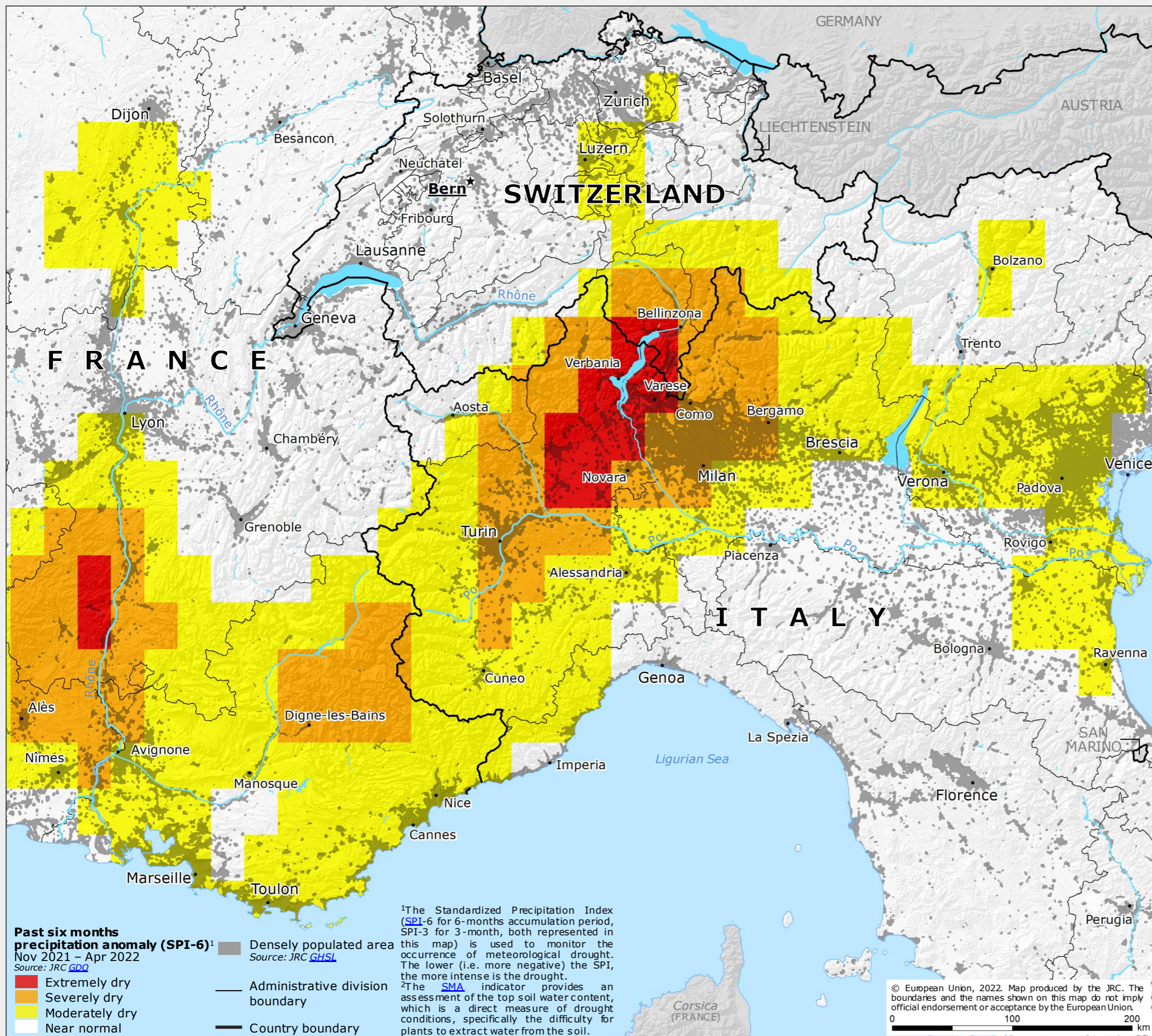
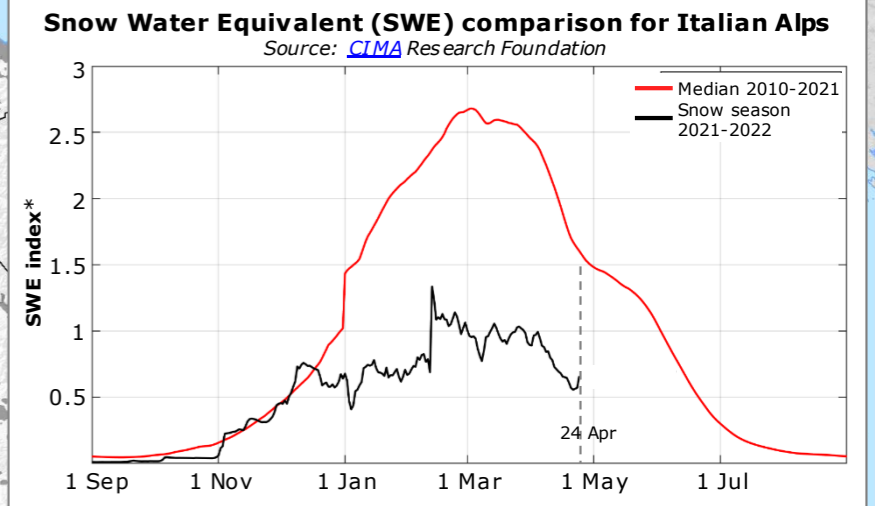
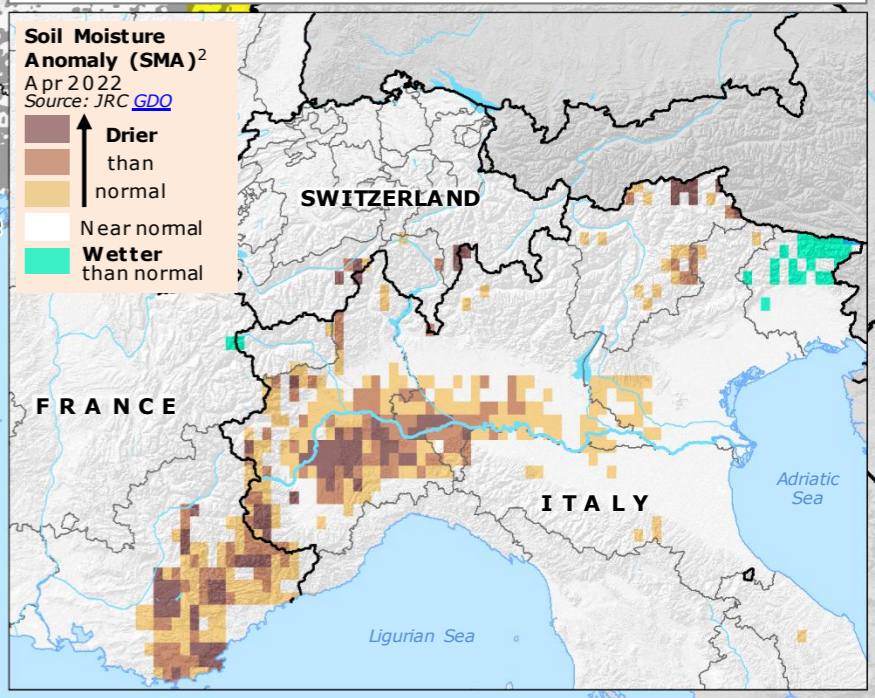


Italy, France, Switzerland | Meteorological and hydrological drought



- Dry conditions have been affecting the Southern Alps region. This are related to a lack of precipitation since November 2021 (and in particular to a severe lack of precipitation in the first three months of 2022).
- This precipitation deficit has been affecting the discharges of Po and Rhône (and their tributaries) here represented. The stored water volume for energy production is very low. Winter crops (especially in northern Italy) are in sub-optimal conditions, and water stress has already reduced the yield potential.

Source: JRC GDO, CIMA Research Foundation



*The SWE index (Avanzi et alij, 2021) was computed by dividing the daily total volume of snow across the Italian Alps by its own historical median (2010-2021). For comparison purposes, this was done both for the median of 2010-2021 historical SWE values and for the 2021-2022 snow season SWE values.

Source: CIMA, JRC GDO